



Hale Trailer Brake & Wheel

A002576-A002577



1050S PNEUMATIC DRY BULK TANK

Weight 8947 lbs. (+/- 3%)	Cubic Feet 1050 (+/- 3%)

Primary Axl 2

Lift Axl 0

Steer Axl 0

BODY

REGION	DOMESTIC
LOAD PROFILE	72K
VESSEL THICKNESS	0.190 5454-H32 ALUMINUM
CUBIC FT CAPACITY	1050
COMMODITY	SAND
MODEL SUB TYPE	NONE
TRAILER OPERATION TYPE	PNEUMATIC
FOOD GRADE	NONE
VESSEL FINISH	MILLED
LENGTH	42 FT. / 12.80 M.
WIDTH	96
OPERATING TEMPERATURE	185 F / 85 C
OPERATING PRESSURE	14.7 PSI / 101.35 KPA
COMPARTMENT OPTIONS	SINGLE COMPARTMENT
LOWER HOPPER CONES	WELD-ON 45 DEG (STANDARD)
MANLID QUANTITY	3
MANLID LOCATION LAYOUT	OVER EACH HOPPER
FIRST MANLID TYPE	BETTS MODEL 8555, 20 IN. MANWAY
SECOND MANLID TYPE	BETTS MODEL 8555, 20 IN. MANWAY
THIRD MANLID TYPE	BETTS MODEL 8555, 20 IN. MANWAY

AERATION

AERATOR FORMAT	3 PER HOPPER (STANDARD)
AERATOR TYPE	BTI SPIN FLOW AERATION KIT W/ WEAR PLATES AND 2 IN. BTI BLACKMAXX INDIVIDUAL AERATION CONTROLS AT EACH HOPPER
AERATION LOCATION	DRIVER SIDE
AERATOR LINE CONTROL	3" BTI BLACKMAX BUTTERFLY VALVE
AERATOR SEAT	WHITE RUBBER (FOOD GRADE) SEAT
AERATOR DISK	ALLOMAXX DISC
AERATOR HANDLE TYPE	ALUMINUM
AERATOR HANDLE POSITION	MANUAL 10 - POSITION

AIR INLET

AIR INLET SIZE	3 IN. SCH. 10 ALUMINUM PIPE
AIR INLET LOCATION	DRIVER SIDE
CHECK VALVES	(2) BTI OPTIMA CHECK VALVES - (1) AT AIR INLET & (1) UP STREAM OF FRONT HOPPER DISCHARGE

PROP / PRES CONTROL VALVE

CONTROL VALVE HOUSING	3" BTI BLACKMAX BUTTERFLY VALVE
CONTROL VALVE DISK	ALLOMAXX DISC
CONTROL VALVE HANDLE TYPE	ALUMINUM
CONTROL VALVE HANDLE POSITION	MANUAL 10 - POSITION

BLOW DOWN LINE

BLOW DOWN LINE HOUSING	3" BTI BLACKMAX BUTTERFLY VALVE
BLOW DOWN LINE DISK	ALLOMAXX DISC
BLOW DOWN LINE SEAT	WHITE RUBBER (FOOD GRADE) SEAT
BLOW DOWN LINE HANDLE TYPE	ALUMINUM
BLOW DOWN LINE HANDLE POSITION	MANUAL 10 - POSITION
BLOW DOWN LINE LOCATION	DRIVER SIDE FRONT
BLOW DOWN RELIEF PRESSURE	15 P.S.I.

TOP AIR

TOP AIR VALVE HOUSING	3" BTI BLACKMAX BUTTERFLY VALVE
TOP LINE LOCATION	DRIVER SIDE FRONT

PRODUCT & DISCHARGE

PRODUCT / DISCHARGE LINE SIZE	4 IN
PRODUCT / DISCHARGE LINE MATERIAL	STEEL
PRODUCT / LINE MATERIAL GAUGE	SCHD.40
PRODUCT VALVE SIZE	5" BTI BLACKMAXX BUTTERFLY VALVES
PRODUCT VALVE SEAT	WHITE RUBBER (FOOD GRADE) SEAT
PRODUCT VALVE DISK	ALLOMAXX DISC
PRODUCT LINE CONNECTION	GROOVE TO GROOVE CLAMPS AT FRONT AND REAR
CLAMPS	WORM GEAR CLAMPS W/ RUBBER SLEEVES BETWEEN HOPPERS
PRODUCT VALVE HANDLE TYPE	ALUMINUM
PRODUCT VALVE HANDLE POSITION	MANUAL 5 - POSITION
PRODUCT TEE TYPE	5 X 4 BTI SANDHOG STEEL BOTTOM DROP TEE
REAR DISCHARGE LOCATION	EXTEND THROUGH AXLES TO REAR
NO. OF GAUGE ENCLOSURE	1
GAUGE LOCATION	Driver Side -Rear- Forward of Tandem

PRIMARY AXLES

MODEL	TANDEM
NO. OF PRIMARY AXLES	2
SUSPENSION	HEND. INTRAAX AAT W/ RAISED AXLE - TP SPINDLE
AXLES	71.5" AXLES
LIFT KIT_	NONE
LIFT CONTROLS	NONE
WHEEL END PACKAGE	YES (HXL5)
BRAKES	7 IN. XL, W/ 30-30 CHAMBERS
CAM GUARDS	HEND. INTRAAX
HUB AND DRUM	CENT W/ DURALITE HUB HP OB 10 STUD TP, LS, 7 IN.
TIRES	GENERAL RA 11R 22.5 16 PLY
WHEELS	ALUMINUM HP 22.5X8.25 - ALL POLISHED (XP)



ACCURIDE STEEL WHEELS

PRIMARY AXLE TIRE INFLATION SYSTEM	NONE
------------------------------------	------





PREP AXLES FOR TIRE INFLATION SYSTEM

CHASSIS

5TH WHEEL PLATE	GALVANIZED STEEL, ADJUSTABLE
5TH WHEEL PLATE HEIGHT	48 IN. HIGH
SUSPENSION CONTROL	AUTOMATIC DUMP ON EMERGENCY GLADHAND
SCALE SYSTEM	LOAD GAUGE - DRIVER SIDE REAR
ABS	MERITOR ROLL STABILITY
SLACKS	AUTO
HUBODOMETER_	NONE
AXLE LUBRICATION	HXL-5 CHEVRON-DELO SEMI-FLUID GREASE W/ SOLID HUBCAPS (H.L.S. WHEEL END PACKAGE)
DOLLIES - LANDING GEAR - LANDING LEGS	JOST - 5 YEAR NO LUBE- D.S.
AIR TANKS	ALUMINUM TANK

LIGHTS

LIGHT TYPE	GROTE L.E.D. W/ GROMMET
REAR I.D. LIGHTS	(3) I.D. LIGHTS TOP
 3 PENNY LIGHTS ADDED TO SECOND RUNG FROM BOTTOM	
LIGHT PANEL	(TURN) (STOP) (STOP) - (STOP) (STOP) (TURN)
STD. MARKER LIGHTS	2 EACH SIDE FRONT & REAR
MID-TURNS	(2 PAIR) LED-BOXED IN
 3- PENNY LIGHTS AS MID TURNS PER SIDE	
BACK-UP LIGHTS	NONE
BACK-UP LIGHT LOCATION	NONE
AUXILIARY CABLE	NONE
NO. OF WORK LIGHTS	2
WORK LIGHT MODEL	L.E.D. CUBE WORK LIGHTS
WORK LIGHT LOCATION	(2) MOUNTED HIGH REAR
WORK LIGHT SWITCH LOCATION	INSIDE

PAINT

SUSPENSION COLOR	MAC BLACK
MAC MACHINE FINISH LOGOS	BLACK (931716)

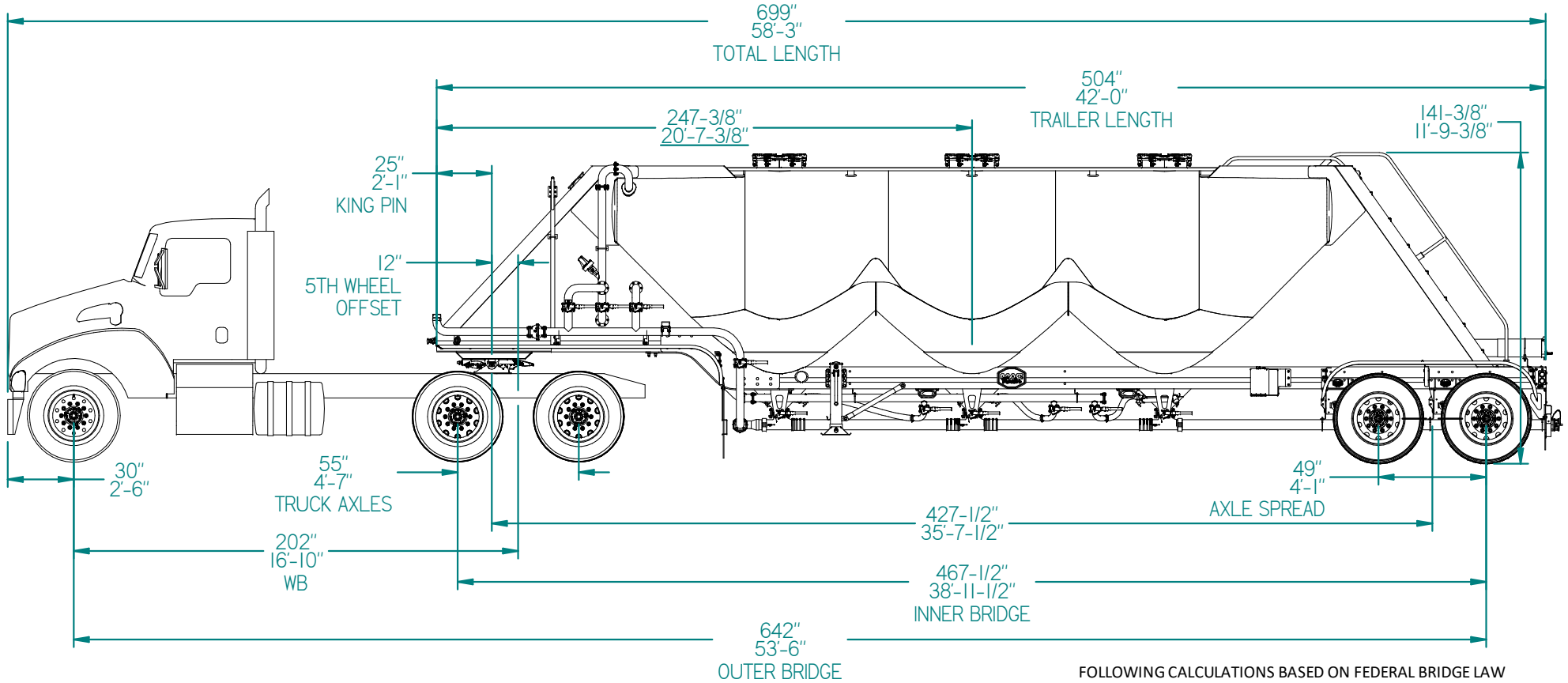
ACCESSORIES

FOLDING LADDER RAIL	NONE
FOLDING LADDER RAIL OPERATION TYPE	NONE
TOE RAIL	FULL LENGTH ON BOTH SIDES
CABINET	NONE
CENTER WALKWAY	ADHESIVE BACKED, SKID-RESISTANT TAPE BETWEEN TOE RAILS
HOSE STORAGE TUBE	(1) 8 IN. X 21 FT. MOUNTED ON CS
GAUGES	1 - LINE P.S.I. / 1 TANK P.S.I. - (INSIDE ILLUMINATED ENCLOSURE)
MUD FLAPS	ANTI-SAIL FLAPS (REAR OF FRONT FENDERS AND REAR OF BACK FENDERS)
PRODUCT DISCHARGE HOSE	NONE
FENDERS_	ALUMINUM ROLLED EDGE - SINGLE CONTOUR AT FRONT, DOUBLE CONTOUR AT REAR
DOCUMENT HOLDER	LOCATED DRIVER SIDE NEAR LANDING GEAR
AIR INLET ACCESSORIES	PTO HOSE HOLDER, MAST, HOOK AND DUMMY ADAPTER LOCATED DRIVER SIDE ABOVE FRONT FENDER

DISCLAIMER

Specifications are believed to be correct, but may contain errors and/or omissions. Photographs are the representative of the subject equipment but may not be identical. Equipment availability, prices and specifications are subject to change without notice.

TRAILER IS FOR REPRESENTATIVE PURPOSES, AND APPEARANCE MAY VARY. FOR ACCURATE REPRESENTATION OF COMPLETED UNIT SEE APPROVAL DRAWINGS PRIOR TO PRODUCTION.



FOLLOWING CALCULATIONS BASED ON FEDERAL BRIDGE LAW

$$W = 500 \left(\frac{LN}{N-1} + 12N + 36 \right)$$

	OUTER BRIDGE		INNER BRIDGE	
	STEER	TANDEM	TANDEM	GVW
ALLOWABLE	12,000 LB.	34,000 LB.	34,000 LB.	80,000 LB.
CALCULATED	11,884 LB.	34,000 LB.	33,999 LB.	79,883 LB.

OUTER BRIDGE = GVW	
LENGTH	53.5 FT.
NUMBER OF AXLES	5
WEIGHT PERMITTED	80,000 LB.

INNER BRIDGE	
LENGTH	38.9 FT.
NUMBER OF AXLES	4
WEIGHT PERMITTED	68,000 LB.

THIS WEIGHT DISTRIBUTION IS BASED ON A MAC STANDARD TRACTOR THAT COMPLIES WITH THE FEDERAL BRIDGE LAW. USING OTHER TRACTOR CONFIGURATIONS WILL AFFECT THE MAX PAYLOAD AND GVW.

ALLOWABLE GVW	80,000 LB.	CALCULATED GVW	79,883 LB.
TRUCK WEIGHT	18,034 LB.	TRUCK WEIGHT	18,034 LB.
TRAILER WEIGHT (BASE-CEMENT)	8,600 LB.	TRAILER WEIGHT (BASE CEMENT)	8,600 LB.
PAYLOAD	53,366 LB.	MAX PAYLOAD	53,249 LB.

TRAILER AXLES	
LENGTH	4.1 FT.
NUMBER OF AXLES	2
WEIGHT PERMITTED	34,000 LB.

TRUCK AXLES	
LENGTH	4.6 FT.
NUMBER OF AXLES	2
WEIGHT PERMITTED	34,000 LB.

http://ops.fhwa.dot.gov/Freight/publications/brdg_frm_wghts/index.htm



PNEUMATIC TANK, 1050
42' CLOSED TANDEM

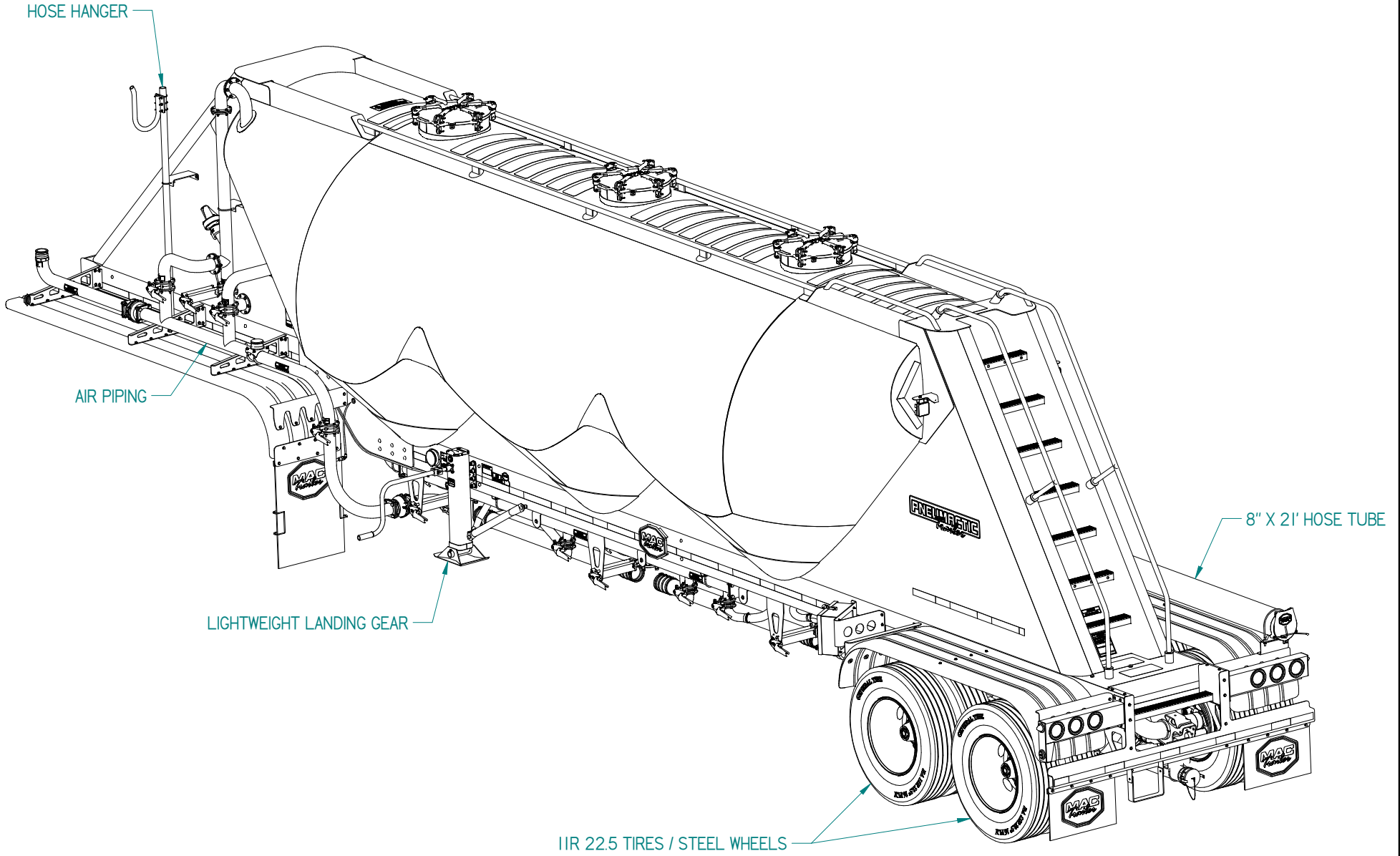
DRAWN BY: cbecker DATE: 09/15/20

ALL WEIGHTS HAVE A TOLERANCE OF +/- 3%

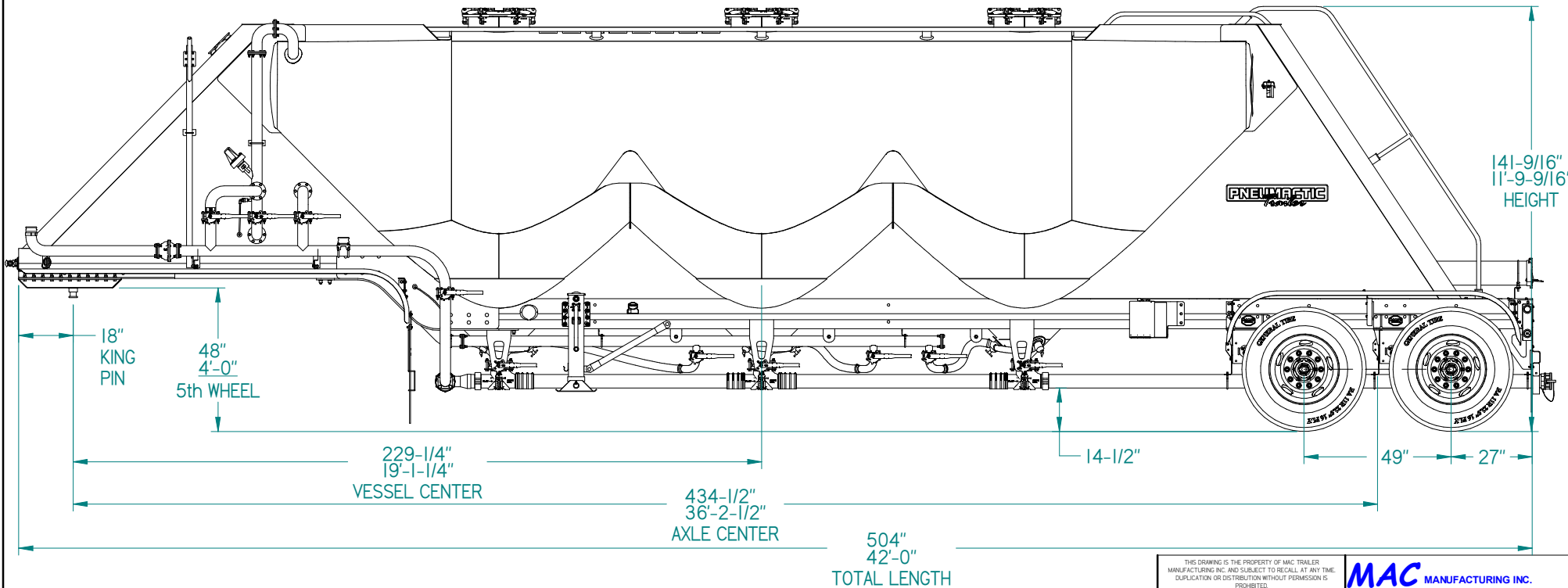
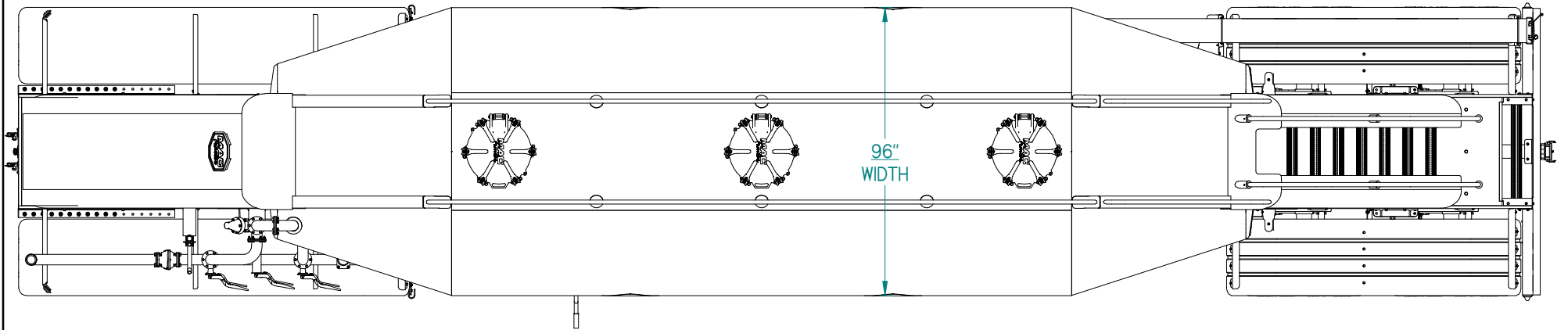
THIS DRAWING IS THE PROPERTY OF MAC MANUFACTURING INC. AND SUBJECT TO RECALL AT ANY TIME. DUPLICATION OR DISTRIBUTION WITHOUT PERMISSION IS PROHIBITED.

APPROVAL SIGNATURE _____

DATE _____



<small>THIS DRAWING IS THE PROPERTY OF MAC TRAILER MANUFACTURING INC. AND SUBJECT TO RECALL AT ANY TIME. DUPLICATION OR DISTRIBUTION WITHOUT PERMISSION IS PROHIBITED.</small>					
<small>UNLESS OTHERWISE SPECIFIED DIMENSIONS ARE IN INCHES ANGLES 1/2" FRACTIONS 1/16" DECIMALS .002</small>				MASTER TANK, 1050 42' CLOSED TANDEM	
1	1/18/2021	RELEASED FOR SIGN-OFF	N/A	Dkelly	DRAWN Dkelly DATE: 1/18/2021
REV.	DATE	REASON FOR CHANGE	ECN #	BY	WEIGHT: SEE SPEC REVISION: 1
				PAGE 1 OF 4	PART NO 61679-61680



THIS DRAWING IS THE PROPERTY OF MAC TRAILER MANUFACTURING INC. AND SUBJECT TO RECALL AT ANY TIME. DUPLICATION OR DISTRIBUTION WITHOUT PERMISSION IS PROHIBITED.

UNLESS OTHERWISE SPECIFIED DIMENSIONS ARE IN INCHES ANGLES 1/2" FRACTIONS 1/8" DECIMALS .002

MAC MANUFACTURING INC.

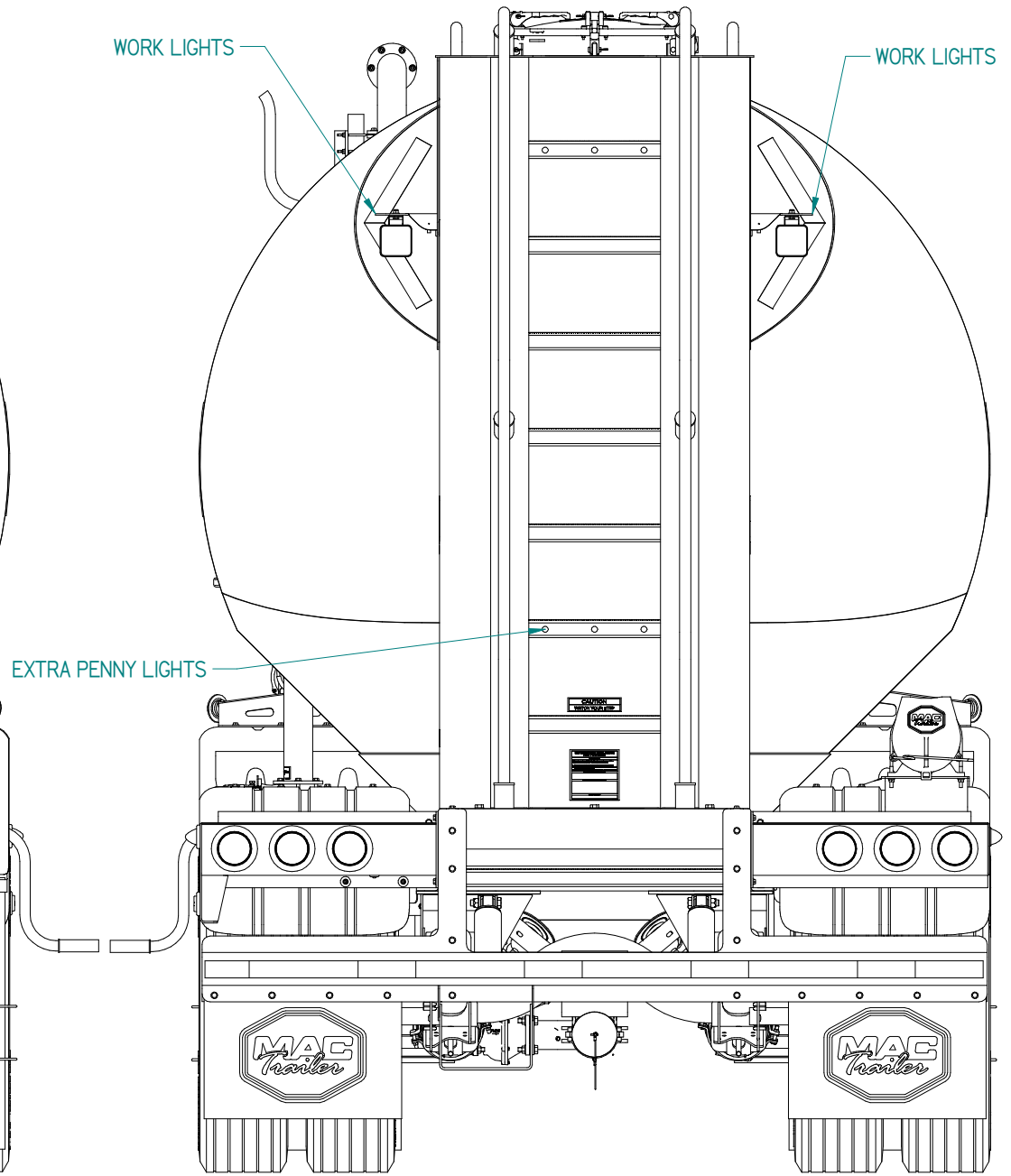
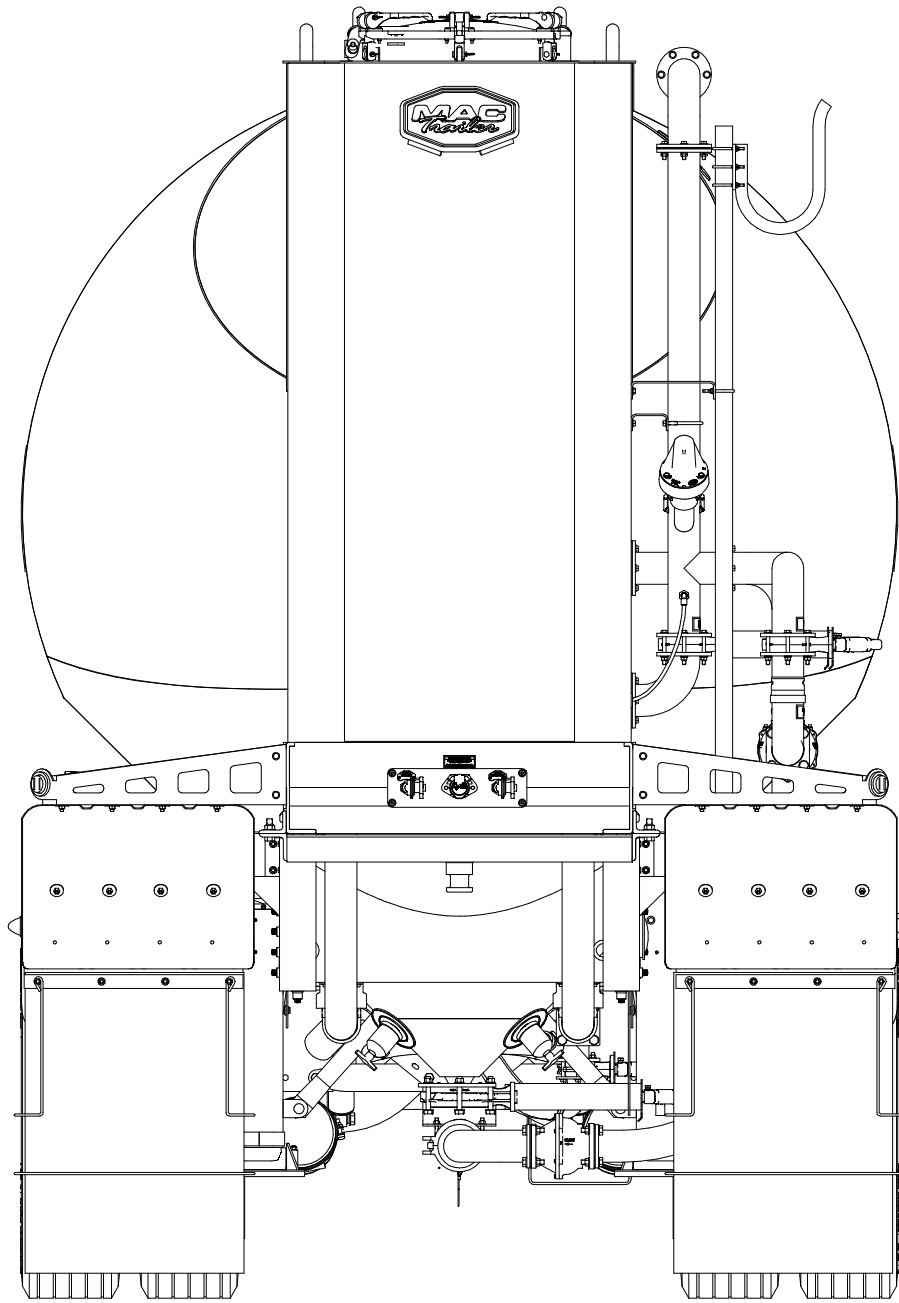
MASTER TANK, 1050 42' CLOSED TANDEM

DRAWN: Dkelly DATE: 1/18/2021

WEIGHT: SEE SPEC REVISION: 1

PAGE 2 OF 4 PART NO. 61679-61680

1	1/18/2021	RELEASED FOR SIGN-OFF	N/A	Dkelly
REV.	DATE	REASON FOR CHANGE	ECN #	BY

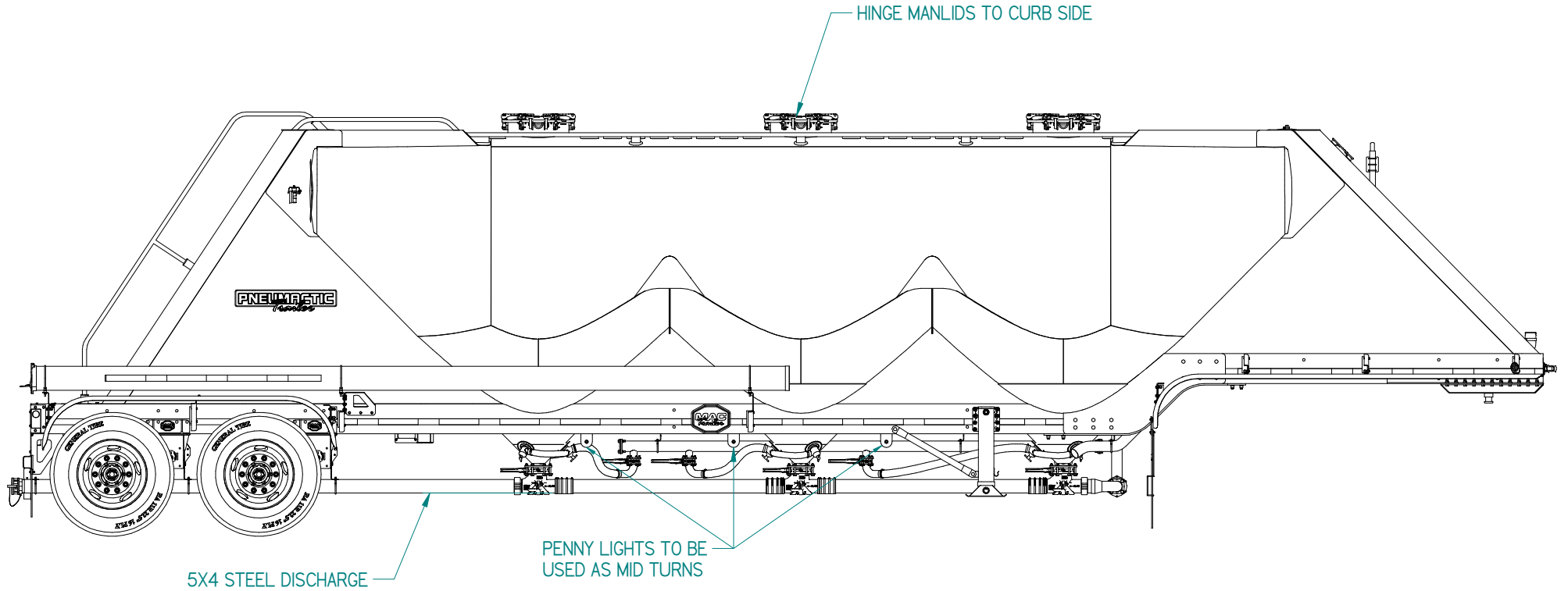


WORK LIGHTS

WORK LIGHTS

EXTRA PENNY LIGHTS

<small>THIS DRAWING IS THE PROPERTY OF MAC TRAILER MANUFACTURING INC. AND SUBJECT TO RECALL AT ANY TIME. DUPLICATION OR DISTRIBUTION WITHOUT PERMISSION IS PROHIBITED.</small>			
<small>UNLESS OTHERWISE SPECIFIED DIMENSIONS ARE IN INCHES ANGLES 1/2° FRACTIONS 1/16 DECIMALS .0002</small>		MAC MANUFACTURING INC. MASTER TANK, 1050 42' CLOSED TANDEM	
1	1/18/2021	RELEASED FOR SIGN-OFF	N/A
REV.	DATE	REASON FOR CHANGE	ECN #
DRAWN Dkelly		DATE: 1/18/2021	
WEIGHT: SEE SPEC		REVISION: 1	
PAGE 3 OF 4		PART NO 61679-61680	



THIS DRAWING IS THE PROPERTY OF MAC TRAILER MANUFACTURING INC. AND SUBJECT TO RECALL AT ANY TIME. DUPLICATION OR DISTRIBUTION WITHOUT PERMISSION IS PROHIBITED.

UNLESS OTHERWISE SPECIFIED DIMENSIONS ARE IN INCHES ANGLES 1/2° FRACTIONS 1/16 DECIMALS .0002

MAC MANUFACTURING INC.

MASTER TANK, 1050 42' CLOSED TANDEM

DRAWN: Dkelly DATE: 1/18/2021

WEIGHT: SEE SPEC REVISION: 1

PAGE 4 OF 4 PART NO. 61679-61680

1	1/18/2021	RELEASED FOR SIGN-OFF	N/A	Dkelly
REV.	DATE	REASON FOR CHANGE	ECN #	BY