



Hale Trailer Brake & Wheel

A010505-A010509
VIN: 5A2272-5A2276



Detailed Specifications

MAGNITUDE 60 MFLD 26 (Model: MAG60**MF826543)**

General

SKU	MAG60****MF826543
Capacity	60 Tons in 12-foot Length with 4 Axles Close Coupled Or 3+1 Axle Configuration; GAWR and GVWR Determine Legal Payloads
Length (Trailer Only)	52 feet 9 inches
Width	8 feet 6 inches
Compatibility	Designed to Accept Optional 51/60 Rear Axle, Spreader, and/or 36 or 83 inch Flip Box
Weight	Est. Configured Weight: 25243# +/- 3%

Gooseneck

Gooseneck Design	Narrow Hydraulic Removable Non-Ground Bearing - Swing Radius of 106 inches (12ft 8in overall Gooseneck Length) Set Up for Wetline Operation
Loaded Fifth Wheel Height	Dual Cam Pawl Arm Assembly with 7 Ride Height Positions (50 inches Nominal)
Kingpin	Removable Kingpin at 86 and 106 inch Radius
Power Source	Set Up for Wet Line Operation
VIN Plate	Bilingual VIN Plate
Registration/Document Holder	Install Registration/Document Holder

Deck

Framework	All Main Longitudinal Members Fabricated with 100,000# Minimum Yield Steel Flanges with 50,000# Webs
Deck Design	Flat Level Deck (MFLD) Design
Deck Length	26 feet 0 inches Clear Deck Length
Loaded Deck Height	22 inches with 6 inches Ground Clearance
Crossmembers	On 24 inch Centers (Nominal)
Flooring	2 inch Nominal Wood (Side Rails Only)
Front Ramps	Manual Front Approach Ramps with Risers Included
Extension Brackets	13 pair - 26 Total Removable Swing Type, 1 Pair - 2 Total Heavy Duty Removable Hook-On Type
Toolbox	2 Fully Covered Trays in Front of Deck Between Mainbeams with Lockable Covers
Hammer Plate	None

Rear Bridge: General

Front Bogie Ramp	Included
Boom Trough	V Crossmembers with Bolt-In V Pan
Deck to Bogie Connection	Modular
Bolsters	Recessed
Covered Rear Bogie	None
Rear Bogie Height	40 7/8 inches to Top Flanges - 36 5/8 inches to Top of Bolsters
Connections for Future Axle Attachment	Air and Electrical Connections to Go Along with Connecting Ears

Rear Bridge: Axles

Number of Axles	3 Axles
Axle Capacity	25,000 lb. Nominal Capacity Per Axle NOTE: GAWR Determined by Suspension Type, Brakes, Tires and Other Components.
Axle Spread	54.5 inches (Between Axles)
Brakes	16.5 inches x 7 inches with 5.5 inches Autoslacks - Heavy Duty Brake Drums - Outboard Mount
Spring Brakes	None
Dust Shield	None
Hubodometer	None

Rear Bridge: Suspension

Suspension	Air Ride
ABS	None
Third Lift Axle	Air Lift Installed on Third Axle
Chain Lift	Chain Lift On First Axle
Ride Height Control	5-Position Mechanical Ride Height Control System
Manual Dump Valve	Manual Dump Valve (Push Pull)
Liquid Filled Gauge	None
Load Scale	None

Wheels and Tires

Wheels	8.25 x 22.5 LVL One Buffed Outside/Steel Inside - Hub-Piloted
Tires	275/70R 22.5 H Ply OEM Standard
Inflation	None

Detailed Specifications

Lighting

Electrical System	DOT Sealed Beam and Harness with LED Lights and 4-inch Flush Mounted Battery Powered Amber Strobes
Tail Lights	3 Tail Light Package
Marker Lights	3 Marker Lights Per Side Including Mid-Turn
Electrical Receptacle	J560 7-Pin Connector

Paint

Paint	Fontaine Black Polyurethane Enamel
-------	------------------------------------

Miscellaneous

Lash Rings	17 Pair - 34 Total
Flag Holders	2 Pair Flag Holders

Additional Options

Flip Box	None
Spreader	None
Flip Axle	None
Dust Shields on Flip Axle	None
Intermediate Axle	None
Deck Insert	None

Terms

Please Note	Price Includes Commodity Surcharges
Commercial Terms	Ex Works- Springville, AL, USA

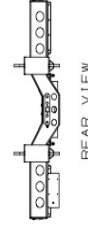
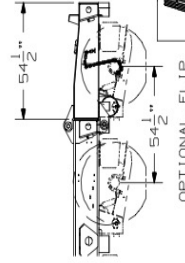
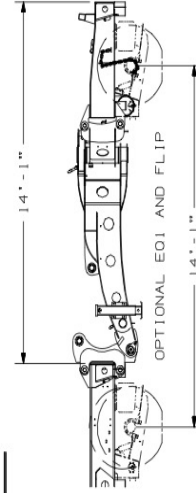
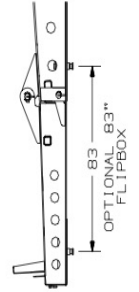
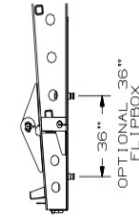
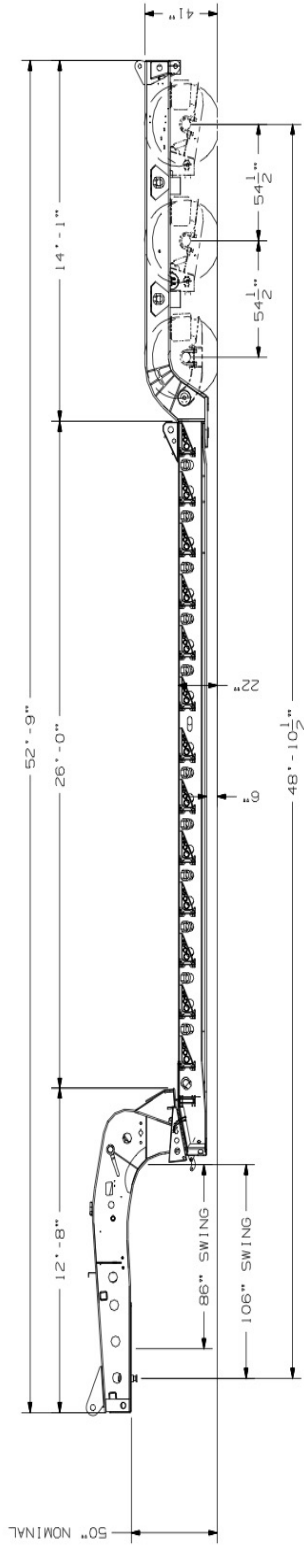
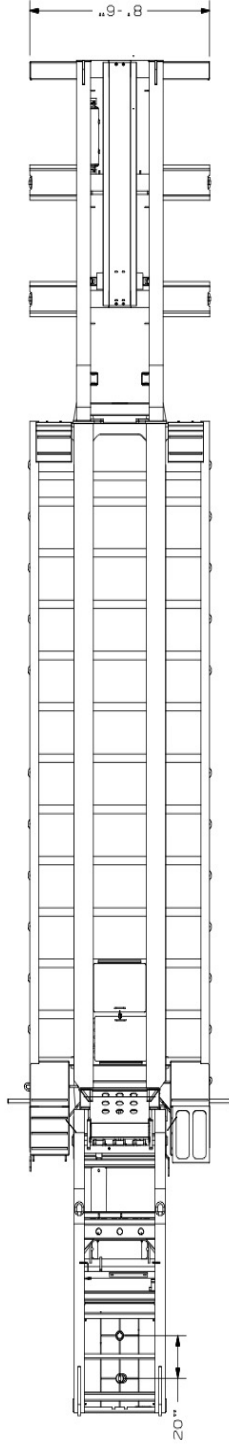
MAGNITUDE 60 MFLD 26



[MAGNITUDE 60 MFLD 26 Base Model](#) (Note: Options not shown)

DISCLAIMER

Specifications are believed to be correct, but may contain errors and/or omissions. Photographs are the representative of the subject equipment but may not be identical. Equipment availability, prices and specifications are subject to change without notice.



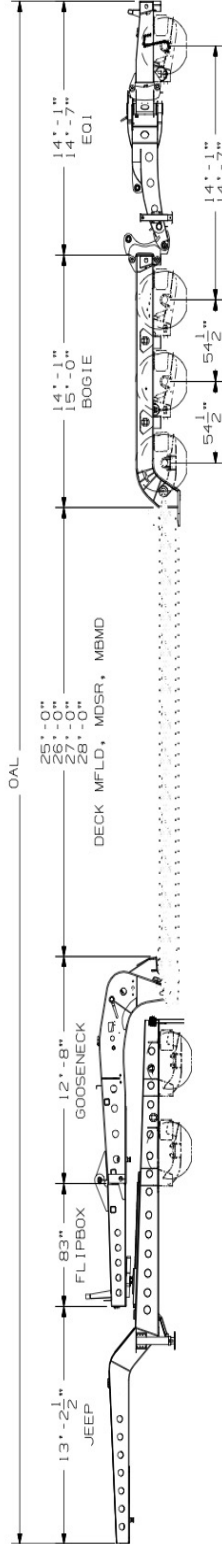
FONTAINE HEAVY-HAUL
SPRINGVILLE, AL

MODEL
MAG 60 MFLD 26 54

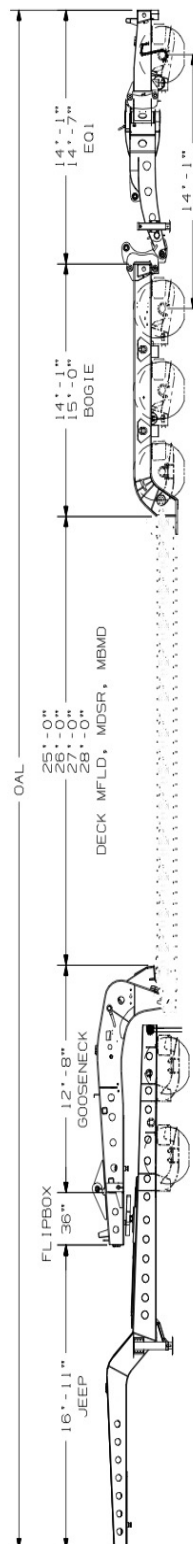
DRAWING NUMBER
6299

THIS DRAWING AND THE INFORMATION, IN WHATEVER MANNER, IS LOANED TO YOU BY FONTAINE HEAVY-HAUL, INC. IS THE PROPERTY OF FONTAINE HEAVY-HAUL, INC. IT IS TO BE USED ONLY FOR THE PROJECT AND SITE SPECIFICALLY IDENTIFIED IN THE DRAWING. IT IS NOT TO BE REPRODUCED, COPIED, OR TRANSMITTED IN ANY FORM OR BY ANY MEANS, ELECTRONIC OR MECHANICAL, INCLUDING PHOTOCOPYING, RECORDING, OR BY ANY INFORMATION STORAGE AND RETRIEVAL SYSTEM. FONTAINE HEAVY-HAUL, INC. ACCEPTS NO LIABILITY FOR ANY DAMAGE OR LOSS OF PROFITS, BUSINESS, OR REPUTATION, OR FOR ANY SPECIAL, CONSEQUENTIAL, OR INCIDENTAL DAMAGES, INCLUDING ATTORNEY'S FEES, ARISING FROM THE USE OF THIS DRAWING.

JEEP	FLIPBOX	GOOSENECK	DECK MFLD, MDSR, MBMD	BOGIE	E01	OAL
13'-2 1/2"	83"	12'-8"	25'	(54.5") 14'-1"	(54.5") 14'-1"	85'-11 1/2"
13'-2 1/2"	83"	12'-8"	25'	(54.5") 14'-1"	(60") 14'-7"	87'-4 1/2"
13'-2 1/2"	83"	12'-8"	26'	(54.5") 14'-1"	(60") 14'-7"	86'-11 1/2"
13'-2 1/2"	83"	12'-8"	26'	(54.5") 14'-1"	(60") 14'-7"	88'-4 1/2"
13'-2 1/2"	83"	12'-8"	27'	(54.5") 14'-1"	(60") 14'-7"	87'-11 1/2"
13'-2 1/2"	83"	12'-8"	27'	(54.5") 14'-1"	(60") 14'-7"	89'-4 1/2"
13'-2 1/2"	83"	12'-8"	28'	(54.5") 14'-1"	(60") 14'-7"	88'-11 1/2"
13'-2 1/2"	83"	12'-8"	28'	(60") 15'-0"	(60") 14'-7"	90'-4 1/2"



JEEP	FLIPBOX	GOOSENECK	DECK MFLD, MDSR, MBMD	BOGIE	E01	OAL
16'-11"	36"	12'-8"	25'	(54.5") 14'-1"	(54.5") 14'-1"	85'-9"
16'-11"	36"	12'-8"	25'	(54.5") 14'-1"	(60") 14'-7"	87'-2"
16'-11"	36"	12'-8"	26'	(54.5") 14'-1"	(60") 14'-7"	86'-9"
16'-11"	36"	12'-8"	26'	(54.5") 14'-1"	(60") 14'-7"	88'-2"
16'-11"	36"	12'-8"	27'	(54.5") 14'-1"	(60") 14'-7"	87'-9"
16'-11"	36"	12'-8"	27'	(54.5") 14'-1"	(60") 14'-7"	89'-2"
16'-11"	36"	12'-8"	28'	(54.5") 14'-1"	(60") 14'-7"	88'-9"
16'-11"	36"	12'-8"	28'	(60") 15'-0"	(60") 14'-7"	90'-2"



THIS DRAWING AND THE DIMENSIONS ARE FOR INFORMATION ONLY. THE DIMENSIONS OF THE TRAILER SHALL NOT BE GUARANTEED. THE DIMENSIONS OF THE TRAILER SHALL BE AS SHOWN ON THE TRAILER. THE DIMENSIONS OF THE TRAILER SHALL BE AS SHOWN ON THE TRAILER. THE DIMENSIONS OF THE TRAILER SHALL BE AS SHOWN ON THE TRAILER.

FONTAINE HEAVY-HAUL
SPRINGVILLE, AL
MODEL
MAG 60

DRAWING NUMBER
6490