



Hale Trailer Brake & Wheel

A011574-A011578

VIN: 5A2613-5A2617



Detailed Specifications

WORKHORSE 55LCC FLD 26 (Model: WKH55LCC*F*826543)

General	
SKU	WKH55LCC*F*826543
Capacity	55 Tons in 13-foot Length with 4 Axles Close Coupled - GAWR and GVWR Determine Legal Loads
Length (Trailer Only)	52 feet 10 inches
Width	8 feet 6 inches
Compatibility	Designed to Accept Optional 51/60 Rear Axle
Accent Package	None
Weight	Est. Configured Weight: 23330# +/- 3%
Gooseneck	
Gooseneck Design	Narrow Hydraulic Removable Non-Ground Bearing - Swing Radius of 108 inches (12ft 7in overall Gooseneck Length) Set Up for Wetline Operation
Loaded Fifth Wheel Height	Dual Cam Pawl Arm Assembly with 7 ride height positions (50 inches nominal)
Kingpin	Removable kingpin at 89 and 108 inch radius
Power Source	Set Up for Wet Line Operation
Hydraulic Fittings	OEM Standard 1/2 inch
VIN Plate	Bilingual VIN Plate
Registration/Document Holder	Install Registration/Document Holder
Deck	
Framework	All Main Longitudinal Members Fabricated with 100,000# Minimum Yield Steel Flanges with 50,000# Webs
Deck Design	Flat Level Deck Design
Deck Length	26 feet 0 inches Clear Deck Length
Loaded Deck Height	18 inches with 6 inches Ground Clearance
Crossmembers	23 1/4 inch
Flooring	2 inch Nominal Wood (Side Rails Only)
Front Ramps	Manual Front Approach Ramps Included
Extension Brackets	13 pair - 26 Total Removable Swing Type, 2 Pair - 4 Total Heavy Duty Removable Hook-On Type
Toolbox	2 Fully Covered Trays in Front of Deck Between Mainbeams with Lockable Covers
Hammer Plate	Hammer Plate Installed Over Recessed Crossmembers. Perforated Plate Under Hammer Plate Forming Two Storage Areas. 2 Pair of Lashing Rings Located in Last Two Deck Sections
Rear Bridge: General	
Front Bogie Ramp	Included
Boom Trough	V Crossmembers with Bolt-In V Pan
Deck to Bogie Connection	Fixed
Bolsters	Recessed
Covered Rear Bogie	Weld-On Load Bearing Wheel Covers
Rear Bogie Height	40 7/8 inches to Top Flanges - 36 5/8 inches to Top of Bolsters
Connections for Future Axle Attachment	Air and Electrical Connections to Go Along with Connecting Ears
Rear Bridge: Axles	
Number of Axles	3 Axles
Axle Capacity	25,000 lb. Nominal Capacity Per Axle NOTE: GAWR Determined by Suspension Type, Brakes, Tires and Other Components.
Axle Spread	54.5 inches (Between Axles)
Brakes	16.5 inches x 7 inches with 5.5 inches Autoslacks - Heavy Duty Brake Drums - Outboard Mount
Spring Brakes	None
Dust Shield	None
Hubodometer	None
Rear Bridge: Suspension	
Suspension	Air Ride
ABS	None
Third Lift Axle	Air Lift Installed on Third Axle
Chain Lift	None
Ride Height Control	7-Position Mechanical Ride Height Control System
Manual Dump Valve	Manual Dump Valve (Push Pull)
Liquid Filled Gauge	None
Load Scale	None
Wheels and Tires	
Wheels	8.25 x 22.5 LxL One Buffed Outside/Steel Inside - Hub-Piloted
Tires	275/70R 22.5 H Ply OEM Standard
Inflation	None



Detailed Specifications

Lighting	
Electrical System	DOT Sealed Beam and Harness with LED Lights and 4-inch Flush Mounted Battery Powered Amber Strobes
Tail Lights	3 Tail Light Package
Marker Lights	3 Marker Lights Per Side Including Mid-Turn
Electrical Receptacle	J560 7-Pin Connector
Paint	
Paint	Fontaine Black Polyurethane Enamel
Miscellaneous	
Lash Rings	19 Pair - 38 Total
Flag Holders	2 Pair Flag Holders
Additional Options	
Accent Package Installed on Flip Box	None
Accent Package Installed on Rigid Spreader	None
Flip Axle	None
Dust Shields on Flip Axle	None
Accent Package Installed on Flip Axle	None

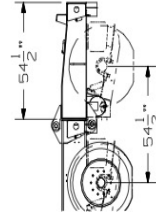
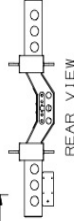
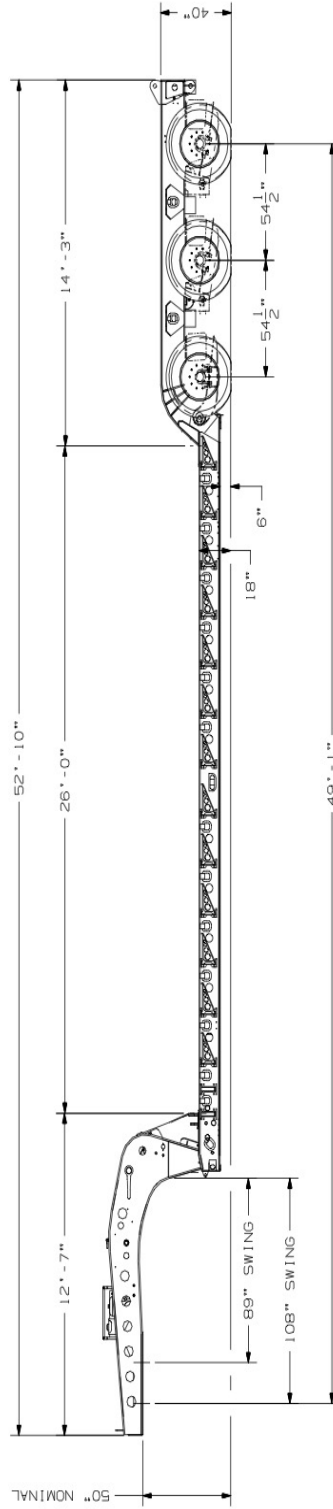
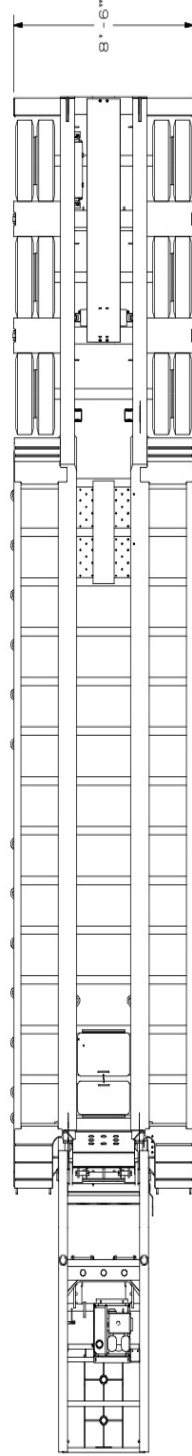
WORKHORSE 55LCC FLD 26



[WORKHORSE 55LCC FLD 26 Base Model](#) (Note: Options not shown)

DISCLAIMER

Specifications are believed to be correct, but may contain errors and/or omissions. Photographs are the representative of the subject equipment but may not be identical. Equipment availability, prices and specifications are subject to change without notice.



FONTAINE HEAVY-HAUL
SPRINGVILLE, AL
WORKHORSE 55LCC FLD
DRAWING NUMBER
6393
26 54

THIS DRAWING IS THE PROPERTY OF FONTAINE HEAVY-HAUL, INC. IT IS TO BE USED FOR THE DESIGN AND CONSTRUCTION OF THE EQUIPMENT ONLY. IT IS NOT TO BE USED FOR ANY OTHER PURPOSE. ANY REPRODUCTION OR USE OF THIS DRAWING WITHOUT THE WRITTEN PERMISSION OF FONTAINE HEAVY-HAUL, INC. IS PROHIBITED. THE USER ASSUMES ALL LIABILITY FOR THE USE OF THIS DRAWING. FONTAINE HEAVY-HAUL, INC. IS NOT RESPONSIBLE FOR ANY DAMAGE OR INJURY RESULTING FROM THE USE OF THIS DRAWING.