



# Hale Trailer Brake & Wheel

A011609-A011623  
VIN: 5A2666-5A2680



## Detailed Specifications

**WORKHORSE 55LCC FLD 26 (Model: WKH55LCC\*F\*826543)**

| General                                |   |
|--|---|
| SKU                                    | WKH55LCC*F*826543   |
| Capacity                               | 55 Tons in 13-foot Length with 4 Axles Close Coupled - GAWR and GVWR Determine Legal Loads  |
| Length (Trailer Only)                  | 52 feet 10 inches   |
| Width                                  | 8 feet 6 inches   |
| Compatibility                          | Designed to Accept Optional 51/60 Rear Axle   |
| Accent Package                         | None  |
| Weight                                 | Est. Configured Weight: 21830# +/- 3%   |
| Gooseneck                              |   |
| Gooseneck Design                       | Narrow Hydraulic Removable Non-Ground Bearing - Swing Radius of 108 inches (12ft 7in overall Gooseneck Length) Set Up for Wetline Operation                                 |
| Loaded Fifth Wheel Height              | Dual Cam Pawl Arm Assembly with 7 ride height positions (50 inches nominal)   |
| Kingpin                                | Removable kingpin at 89 and 108 inch radius   |
| Power Source                           | Set Up for Wet Line Operation   |
| Hydraulic Fittings                     | OEM Standard 1/2 inch   |
| VIN Plate                              | Bilingual VIN Plate   |
| Registration/Document Holder           | Install Registration/Document Holder  |
| Deck                                   |   |
| Framework                              | All Main Longitudinal Members Fabricated with 100,000# Minimum Yield Steel Flanges with 50,000# Webs  |
| Deck Design                            | Flat Level Deck Design  |
| Deck Length                            | 26 feet 0 inches Clear Deck Length  |
| Loaded Deck Height                     | 18 inches with 6 inches Ground Clearance  |
| Crossmembers                           | 23 1/4 inch   |
| Flooring                               | 2 inch Nominal Wood (Side Rails Only)   |
| Front Ramps                            | Manual Front Approach Ramps Included  |
| Extension Brackets                     | 13 pair - 26 Total Removable Swing Type, 2 Pair - 4 Total Heavy Duty Removable Hook-On Type   |
| Toolbox                                | 2 Fully Covered Trays in Front of Deck Between Mainbeams with Lockable Covers   |
| Hammer Plate                           | Hammer Plate Installed Over Recessed Crossmembers. Perforated Plate Under Hammer Plate Forming Two Storage Areas. 2 Pair of Lashing Rings Located in Last Two Deck Sections |
| Rear Bridge: General                   |   |
| Front Bogie Ramp                       | Included  |
| Boom Trough                            | V Crossmembers with Bolt-In V Pan   |
| Deck to Bogie Connection               | Fixed   |
| Bolsters                               | Recessed  |
| Covered Rear Bogie                     | None  |
| Rear Bogie Height                      | 40 7/8 inches to Top Flanges - 36 5/8 inches to Top of Bolsters   |
| Connections for Future Axle Attachment | Air and Electrical Connections to Go Along with Connecting Ears   |
| Rear Bridge: Axles                     |   |
| Number of Axles                        | 3 Axles   |
| Axle Capacity                          | 25,000 lb. Nominal Capacity Per Axle NOTE: GAWR Determined by Suspension Type, Brakes, Tires and Other Components.  |
| Axle Spread                            | 54.5 inches (Between Axles)   |
| Brakes                                 | 16.5 inches x 7 inches with 5.5 inches Autoslacks - Heavy Duty Brake Drums - Outboard Mount   |
| Spring Brakes                          | None  |
| Dust Shield                            | None  |
| Hubodometer                            | None  |
| Rear Bridge: Suspension                |   |
| Suspension                             | Air Ride  |
| ABS                                    | None  |
| Third Lift Axle                        | Air Lift Installed on Third Axle  |
| Chain Lift                             | None  |
| Ride Height Control                    | 7-Position Mechanical Ride Height Control System  |
| Manual Dump Valve                      | Manual Dump Valve (Push Pull)   |
| Liquid Filled Gauge                    | None  |
| Load Scale                             | None  |
| Wheels and Tires                       |   |
| Wheels                                 | 8.25 x 22.5 LxL One Buffed Outside/Steel Inside - Hub-Piloted   |
| Tires                                  | 275/70R 22.5 H Ply OEM Standard   |
| Inflation                              | None  |

## Detailed Specifications

### Lighting

|                       |  |
|-----------------------|--|
| Electrical System     | DOT Sealed Beam and Harness with LED Lights and 4-inch Flush Mounted Battery Powered Amber Strobes |
| Tail Lights           | 3 Tail Light Package   |
| Marker Lights         | 3 Marker Lights Per Side Including Mid-Turn  |
| Electrical Receptacle | J560 7-Pin Connector   |

### Paint

|       |                                    |
|-------|------------------------------------|
| Paint | Fontaine Black Polyurethane Enamel |
|-------|------------------------------------|

### Miscellaneous

|              |                     |
|--------------|---------------------|
| Lash Rings   | 19 Pair - 38 Total  |
| Flag Holders | 2 Pair Flag Holders |

### Additional Options

|  |      |
|--|------|
| Accent Package Installed on Flip Box       | None |
| Accent Package Installed on Rigid Spreader | None |
| Flip Axle                                  | None |
| Dust Shields on Flip Axle                  | None |
| Accent Package Installed on Flip Axle      | None |

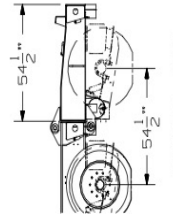
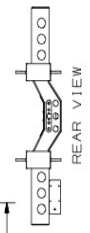
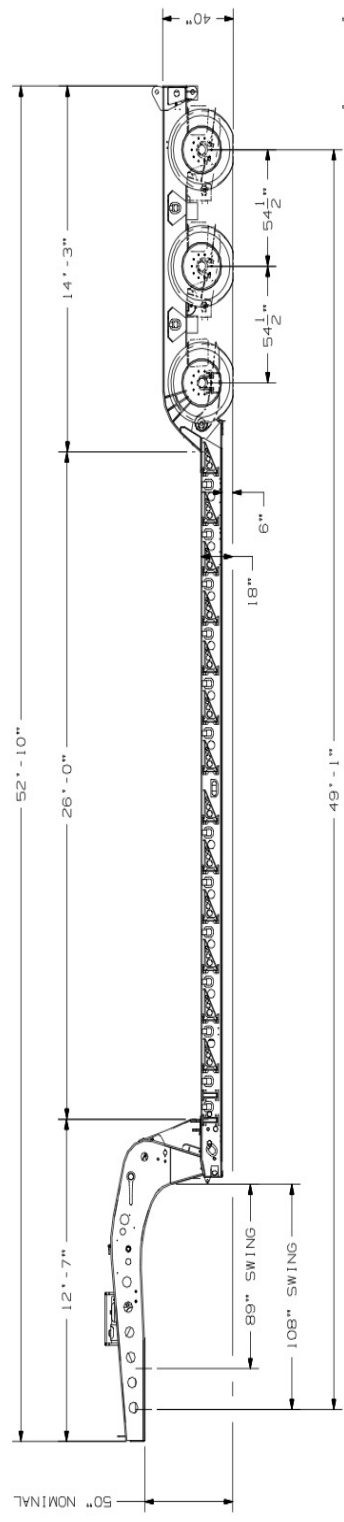
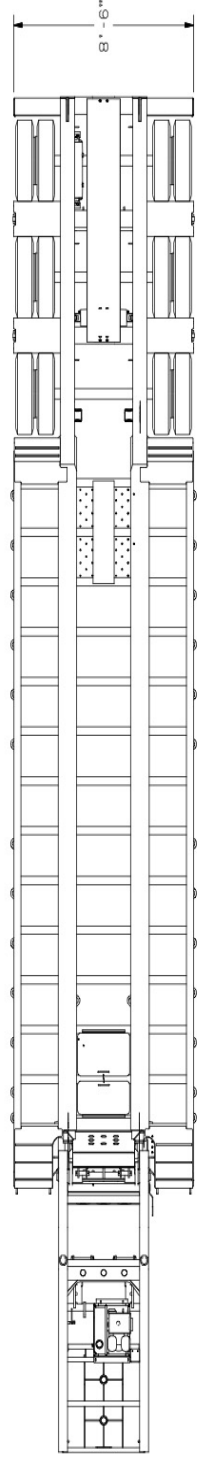
### WORKHORSE 55LCC FLD 26



[WORKHORSE 55LCC FLD 26 Base Model](#) (Note: Options not shown)

#### DISCLAIMER

Specifications are believed to be correct, but may contain errors and/or omissions. Photographs are the representative of the subject equipment but may not be identical. Equipment availability, prices and specifications are subject to change without notice.



**FONTAINE HEAVY-HAUL**  
SPRINGVILLE, AL  
**WORKHORSE 55LCC FLD**  
26 54  
DRAWING NUMBER  
6393

THIS DRAWING IS THE PROPERTY OF FONTAINE HEAVY-HAUL. IT IS TO BE USED ONLY FOR THE PROJECT AND LOCATION SPECIFICALLY IDENTIFIED ON THE DRAWING. ANY REUSE, REPRODUCTION, OR MODIFICATION OF THIS DRAWING WITHOUT THE WRITTEN PERMISSION OF FONTAINE HEAVY-HAUL IS STRICTLY PROHIBITED.