

### Hale Trailer Brake & Wheel A013468-A013667



#### 40' GOOSENECK 2" L X H SSIS



#### CTIO

Container chassis defined for repeated use in level or inclined and transport of a full container.

Meets all RMV and DOT and TMM.

The 40' gooseneck container chassis is capable of hauling a 40' ISO container.

The model fits the standard carrier feet across the United States.

DIMENSIONS & Weight		
Overall Length	40'-8"	excluding dock bumpers
Overall Width	96"	
Fifth Wheel Height	48"±1"	
Rear Deck Height	48"±1"	
Kingpin Location	30"	from rear face of front bolster
Landing Gear location	130"	from the rear face of the front bolster
Axle Spread	49"	
Tandem Location	54"	from rear face of rear bolster
Tare Weight	6,700 Lbs	±2%
Gross Vehicle Weight Rating	73,800 Lbs	

#### Material:

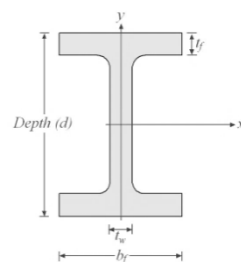
All structural steel is ASTM-A572, Grade 50, or ASTM-A572, Grade 65, or better.

All structural fasteners are Grade 5 or better and are zinc coated.

#### Main Beam:

W12-19lb/ft hot-rolled I-beam,  
ASTM-A572, Grade 50

in x lbf/ft	Area (in <sup>2</sup> )	d (in)	b <sub>f</sub> (in)	t <sub>f</sub> (in)	t <sub>w</sub> (in)	I <sub>xx</sub> (in <sup>4</sup> )	Z <sub>xx</sub> (in <sup>3</sup> )	I <sub>yy</sub> (in <sup>4</sup> )	Z <sub>yy</sub> (in <sup>3</sup> )	I <sub>xy</sub> (in <sup>4</sup> )
W12 x 19	5.57	12.16	4.005	0.350	0.235	130	21.3	4.82	3.76	1.88



### GN Beam:

5-1/4" deep x 4" wide I-beam, 1/2inch thick flange and 1/4inch thick web.

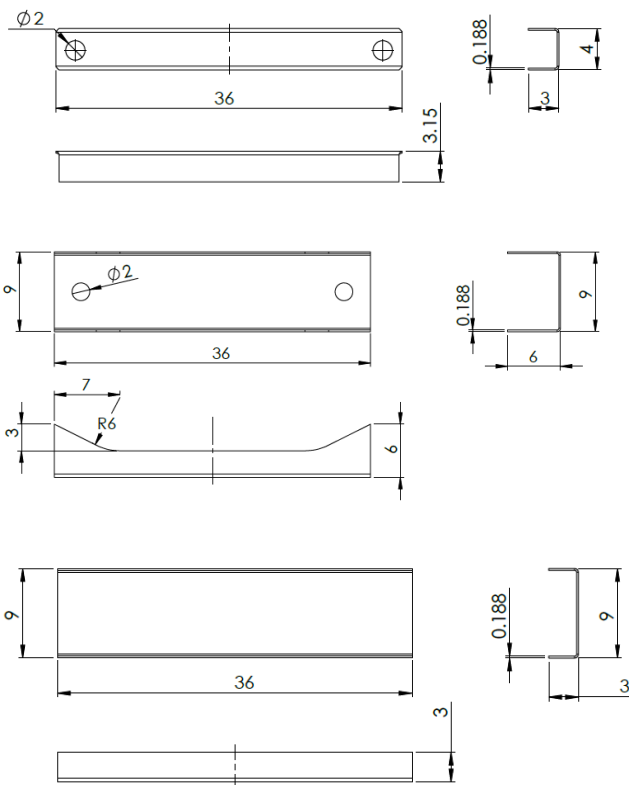
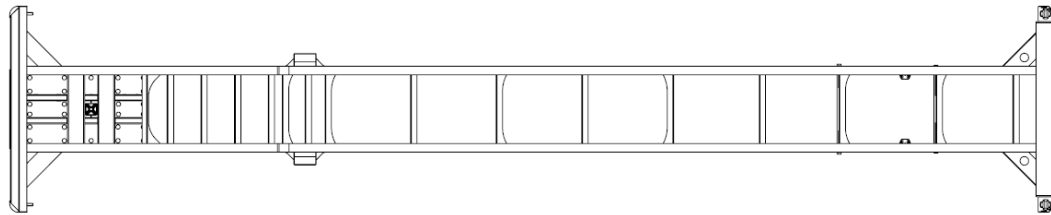
ASTM A572 Grade 65

### Crossmember:

3/16inch thick x 3" wide x 9" deep channel.

3/16inch thick channel with integrated triangular for GN beam and landing gear area.

Material: ASTM-A572, Grade 50

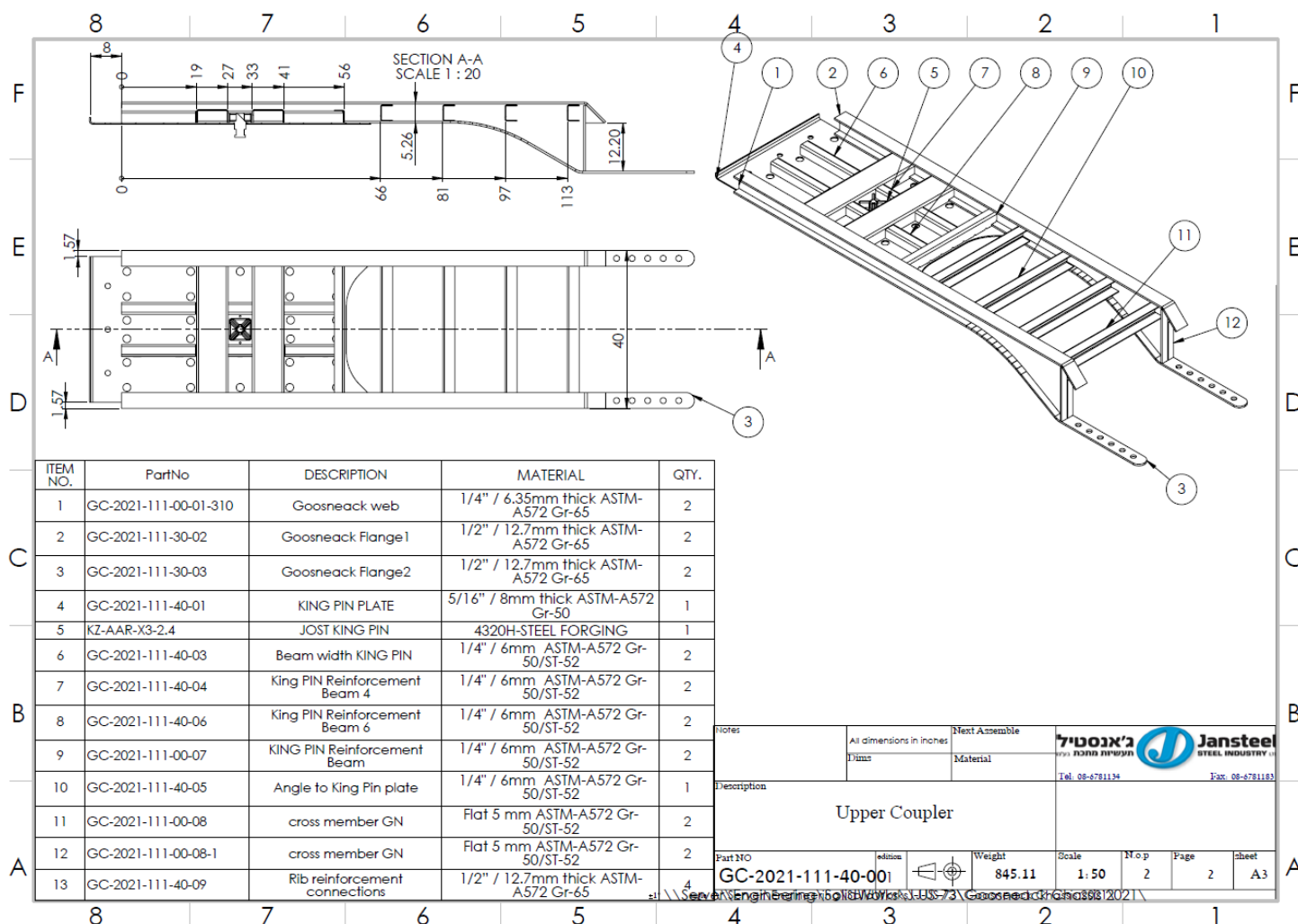


### Upper Coupler:

5/16 inch thick, ASTM-A572, Grade 50

2" diameter water drain holes

reinforced by 1/4inch thick channel type kingpin supports.



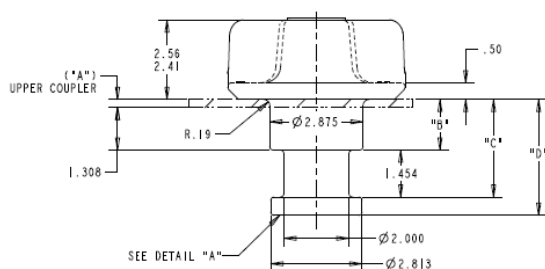
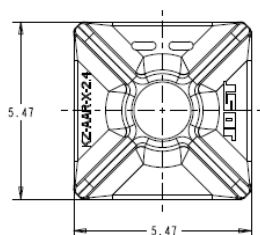
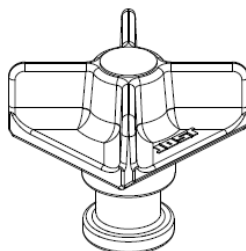
## King pin: JOST

The King Pin is 2" diameter square type S.A.E. Standard J700B and certified per AAR.

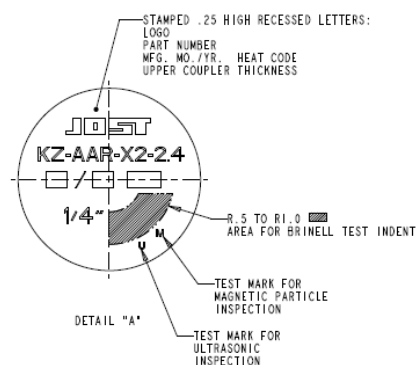
PART NUMBER	DIM "A" UPPER COUPLER	DIM "B"	DIM "C"	DIM "D"
KZ-AAR-X1-2.4	.19	1.496	2.950	3.512
KZ-AAR-X2-2.4	.25	1.558	3.012	3.574
KZ-AAR-X3-2.4	.31	1.620	3.074	3.636
KZ-AAR-X4-2.4	.38	1.683	3.137	3.699
KZ-AAR-X5-2.4	.50	1.803	3.257	3.819

### NOTES:

- MAT'L: 4320H STEEL FORGING
- HEAT TREAT: 380-420 BHN  
Ø62 MIN. DEPTH  
STARTING FROM THE UPPER PORTION OF THE  
SHOULDER TO THE BOTTOM OF THE LIP.
- INSPECTED 100% FOR SURFACE HARDNESS AND FOR  
DEFECTS BY ULTRASONIC AND MAG PARTICLE METHODS.



REV	DESCRIPTION	NAME	CHK	APPR	PROB	DATE
A	RELEASED	HART	JOW	JOW	176-KP17	10-26-17



SYMBOL	CLASS	EXISTING	JOST INTERNATIONAL
[01]	CRITICAL FEATURE	0x	1776 Rogers Street Grand Haven, Michigan 49417
[02]	MAIN FEATURE	0x	CRUCIFORM KINGPIN
[03]	UNMARKED DATA ARE MINOR FEATURES	0x	SIZE: DWG NO: C KZ-AAR-X-TAB-24-SALES
NAME	HART	DATE: 10-25-17	SCALE: 0.500
CHK	JOW	APPR	JOW

PROPRIETARY  
The information contained in or disclosed by this document is considered proprietary by JOST International, Inc. This document and the items and information contained or disclosed herein shall not be used, copied or reproduced in whole or in part, nor shall the contents be revealed in any manner to any person unless written permission is obtained from JOST International, Inc.

Released production USA

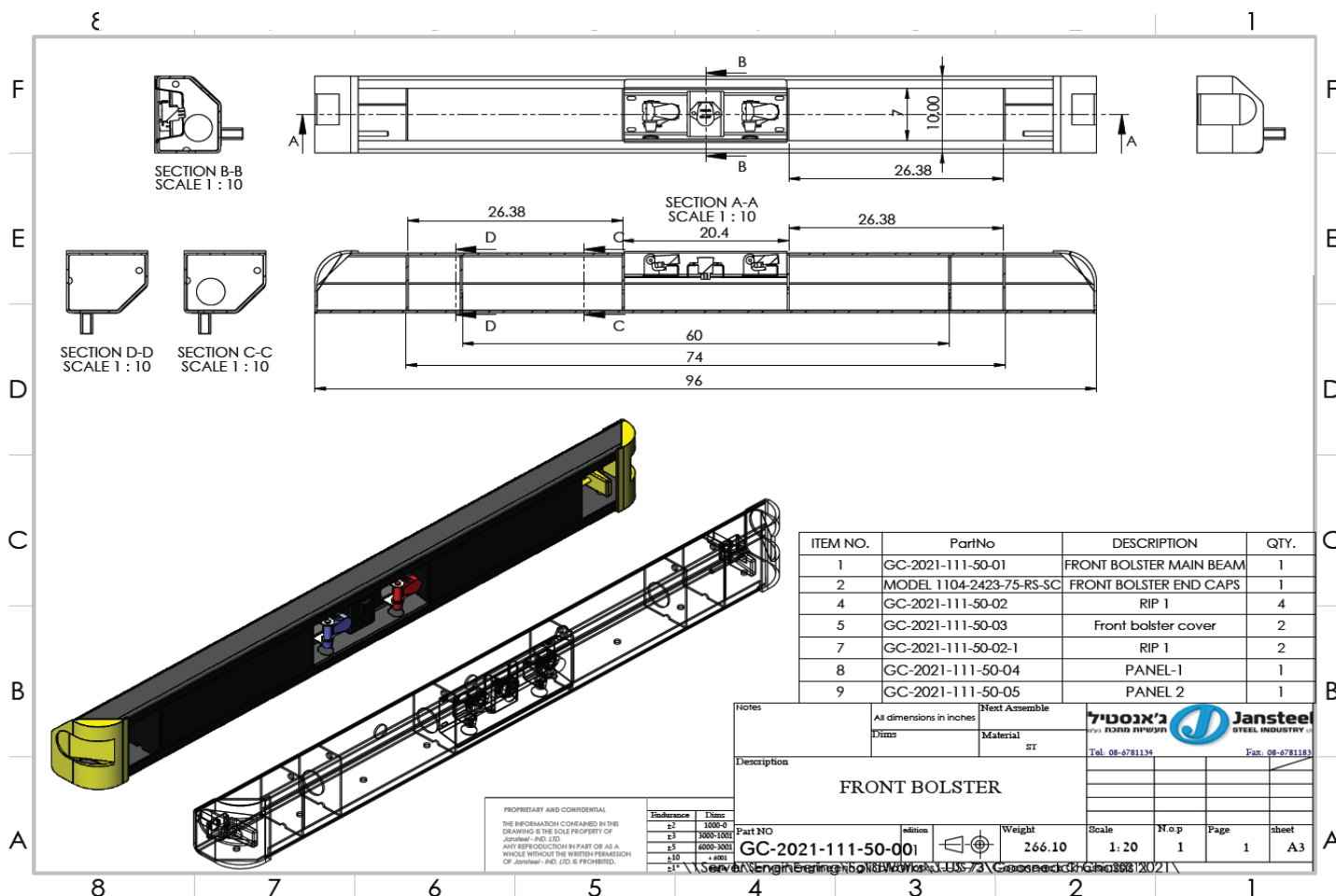
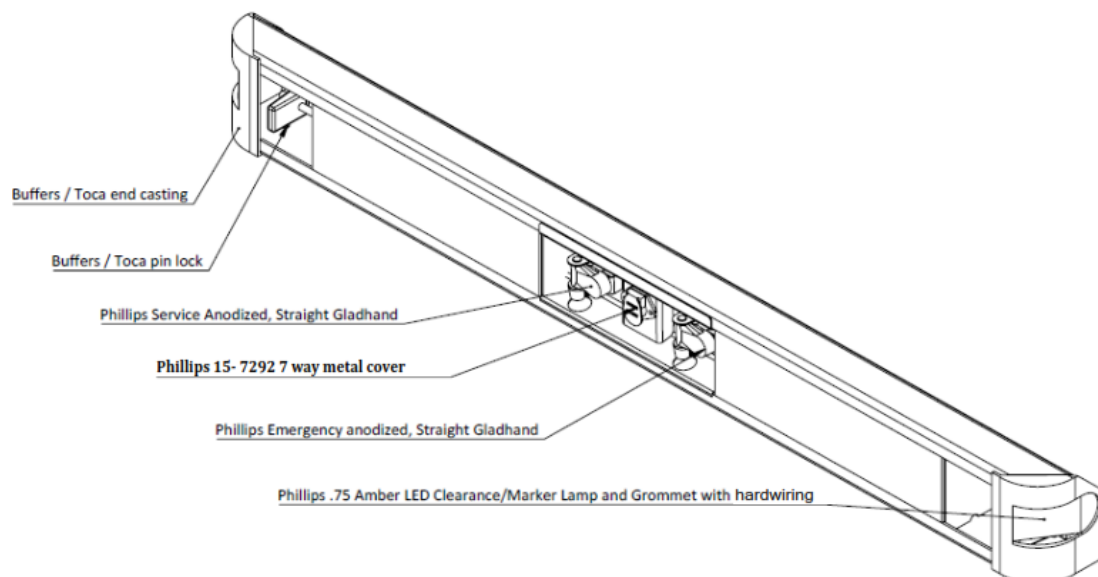
## Front Bolster:

8" wide x 10" high, 1/4inch thick open section, with 3-1/2" chamfer in full length.

Accommodate installed Buffers 1104-2423-75 (RS & CS) end caps.

Front bolster provides full recessing of lights, and air and electrical connectors.

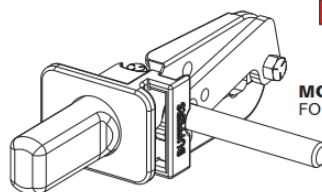
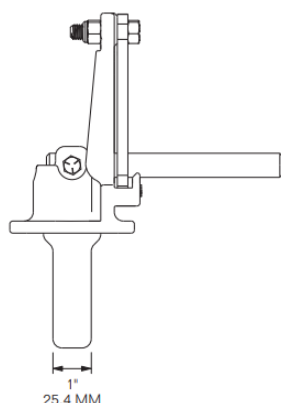
7-way receptacle Phillips 15-7292 and straight Gladhands.



## Front Locking Pin:

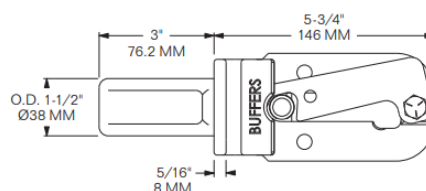
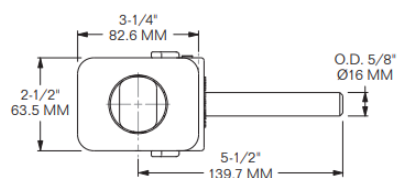
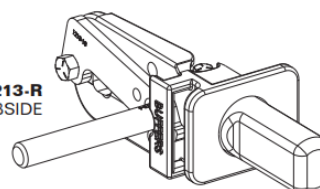
MODEL 1103-1213-L SHOWN DIMENSIONED.  
MODEL 1103-1213-R IS THE MIRROR OPPOSITE.

**MODEL 1103-1213-L**  
**MODEL 1103-1213-R**



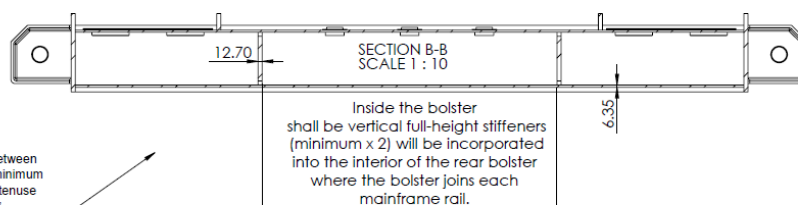
**MODEL 1103-1213-L**  
**FOR FRONT ROADSIDE**

**MODEL 1103-1213-R**  
**FOR FRONT CURBSIDE**

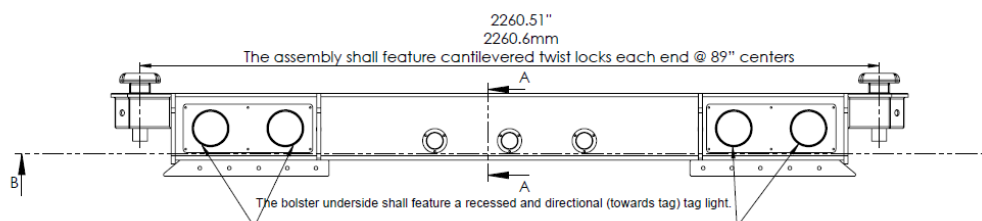
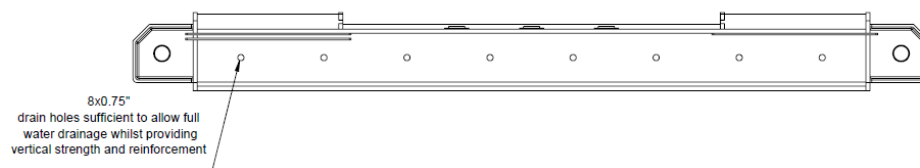


## Rear Bolster:

8" wide x 12.7mm thick top plate with 6-7/8" wide x 8" deep x 6.73mm thick "U" channel.

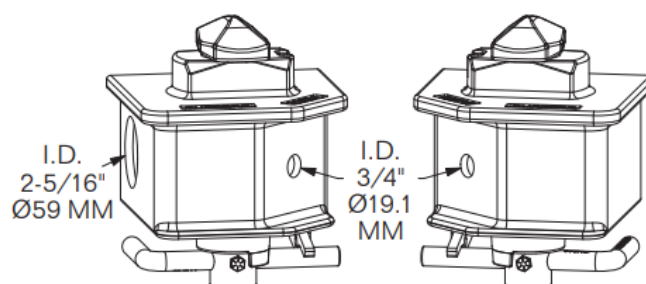
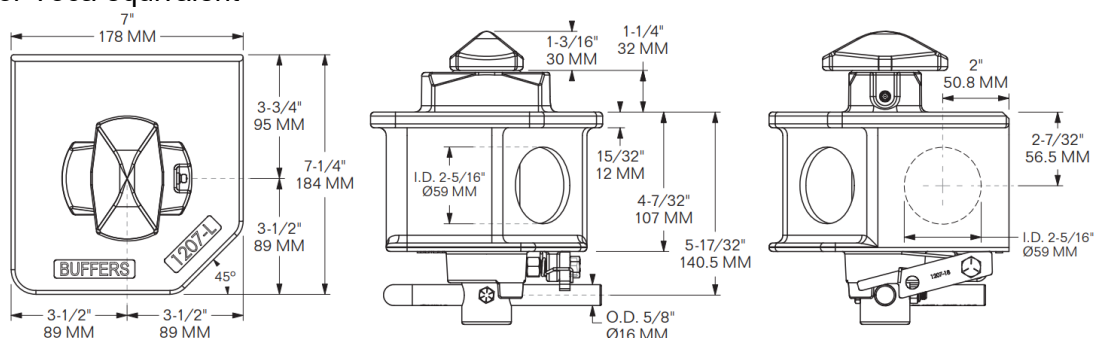


There shall be reinforcement plates between the bolster and the main rails each a minimum of 1/4" thick x 18" x 18" with the hypotenuse edge turned down at least 1 1/2".



# Twist Lock:

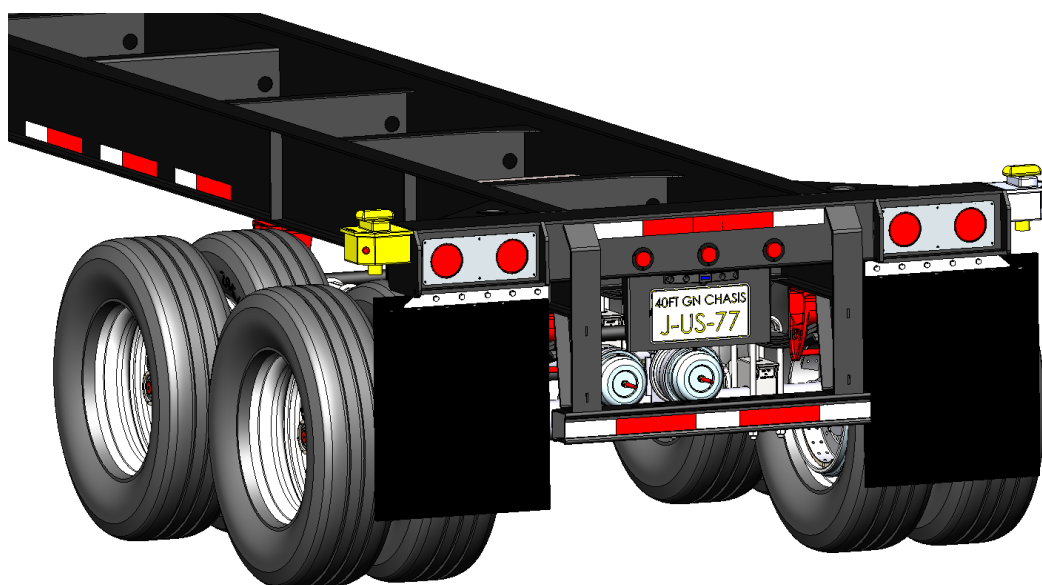
Order 1101-1207-75-L and 1101-1207-75-R to fit loc or Toca equivalent



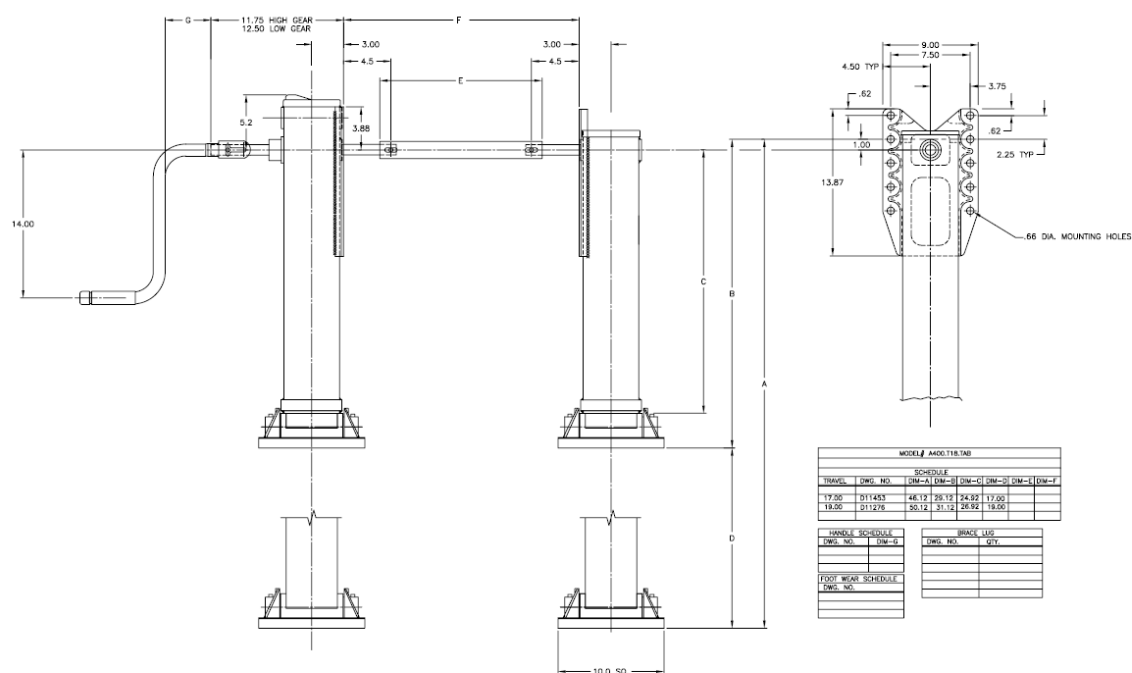
**1101-1207-75-L**  
Front Curbside  
or Rear Roadside  
**2 Light Holes**

**1101-1207-75-R**  
Front Roadside  
or Rear Curbside  
**1 Light Hole**

**FINISH: WELDABLE PRIMER**  
**WEIGHT: 22.5 LBS / 10.2 Kg**



## Landing Gear: JOST: A400-T1-17



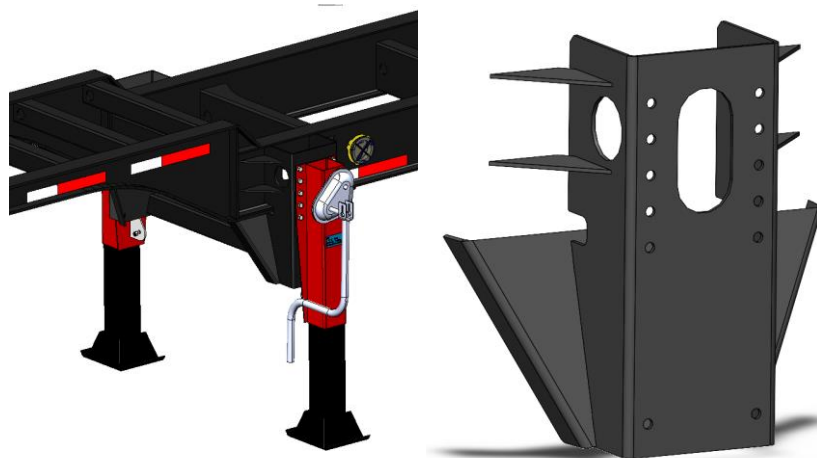
ITEM	QTY	PART NO.	DESCRIPTION
<b>JOST INTERNATIONAL</b> 17750 WOODS RD., P.O. Box 527 Grand Haven, Michigan 49417			
<b>WORKING DIMENSIONS</b> SEE OF THE DIMENSIONS IN DIMENSIONS EXCEPT IN DIMENSIONS EXCEPT IN DIMENSIONS EXCEPT IN			
<b>REVISIONS</b> NAME: ESB DATE: 10-23-06 APPR. BY: REF. NO.: A CORRECT "C" DIM DATE: 05-13-10 APPR. BY: REF. NO.: REVISION DESCRIPTION DATE: 05-13-10 APPR. BY: REF. NO.:			
SCALE: 1/4" = 1'-0" MNT'L SEE NOTE			

## Landing Gear Support Bracket:

Fabricated of 1/4 inch thick grade 50 steel  
and welded to the main frame.

Reinforced by 4 x 1/4 inch thick stiffeners fore and aft of the landing gear box.

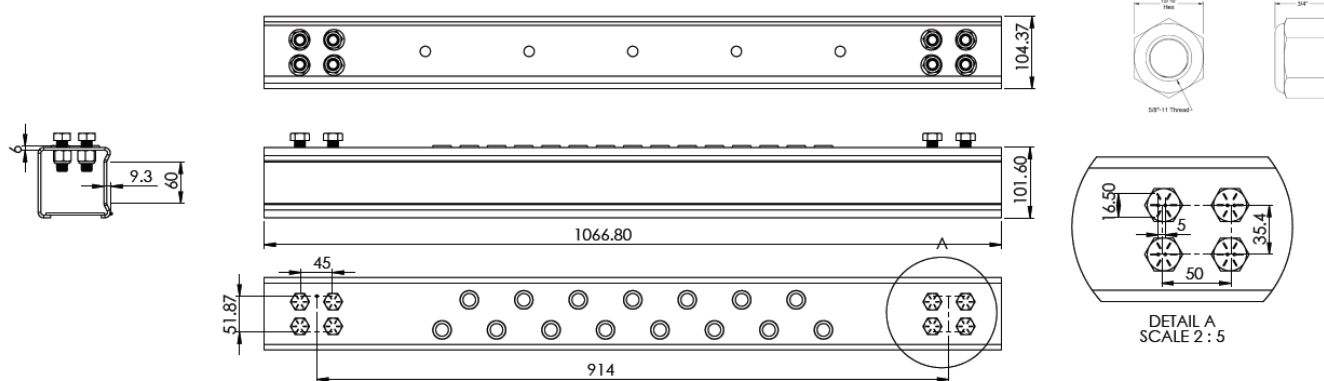
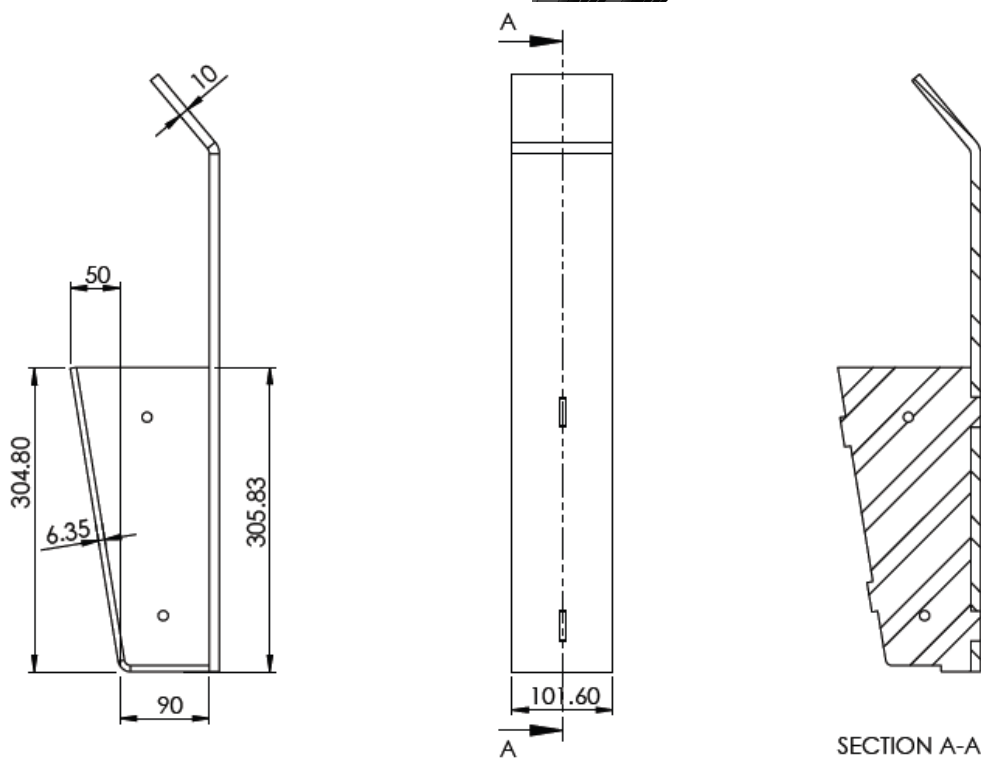
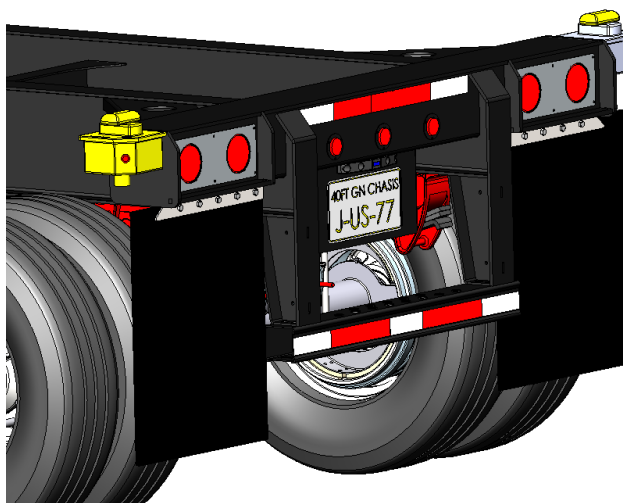
The box ☐er ☐ it ☐ acce ☐ to create 2" stitch welds inside the box.





# Rear Bumper:

4" x 4" square type step bar.  
horizontal safety step bar 42"  
wide with non-skid top surface  
Material: 3mm thick ST-52

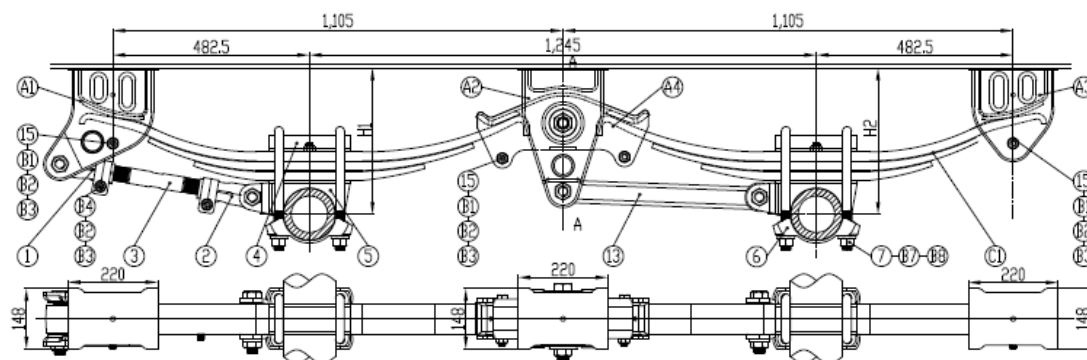


# **Axle:**

## **AXN AXLE SPECIFICATION**

Part Number	Description	Qty
TA225T67E7155152	Trailer BB Axle	1
A21-6101-A	Trailer Axle ID Tag, AXN Logo	1
TSE07135S8X	ASA: TSE, 5.5", 28 Spline, Straight Arm, 10 Year Warranty	2
H30-0647FNTZ	AXN, N-series, 10-stud, 11.25" BC	2
HM212049-S	Bearing Cone Stemco, N-Series Outer	2
HM218248-S	Bearing Cone Stemco, N-Series Inner	2
CVR_Delo_SF	Lubricant: Chevron Delo SF	40
ST_358-4009	Hub Cap: Stemco, Sentinel	2
ST_400-4743	Zip Torq	2
ST_330-3009	Gasket: Stemco N-Series	2
ST_307-0743	Seal Stemco Guardian HP, N-Series	2
RG_CTS3030AXN-5.75	3030 Spring, Standard Stroke	2
BB_3112SH5	5/16-18 x 0.75" w/ split lock washer	12
A15-0101	ABS Sensor 90 Degrees / 1 ft	2
A16-0101	ABS Sensor Clip: Wabco	2
WL-001	Wire loom for ABS sensor	2

**Tandem & Suspension:** AXN Suspension.



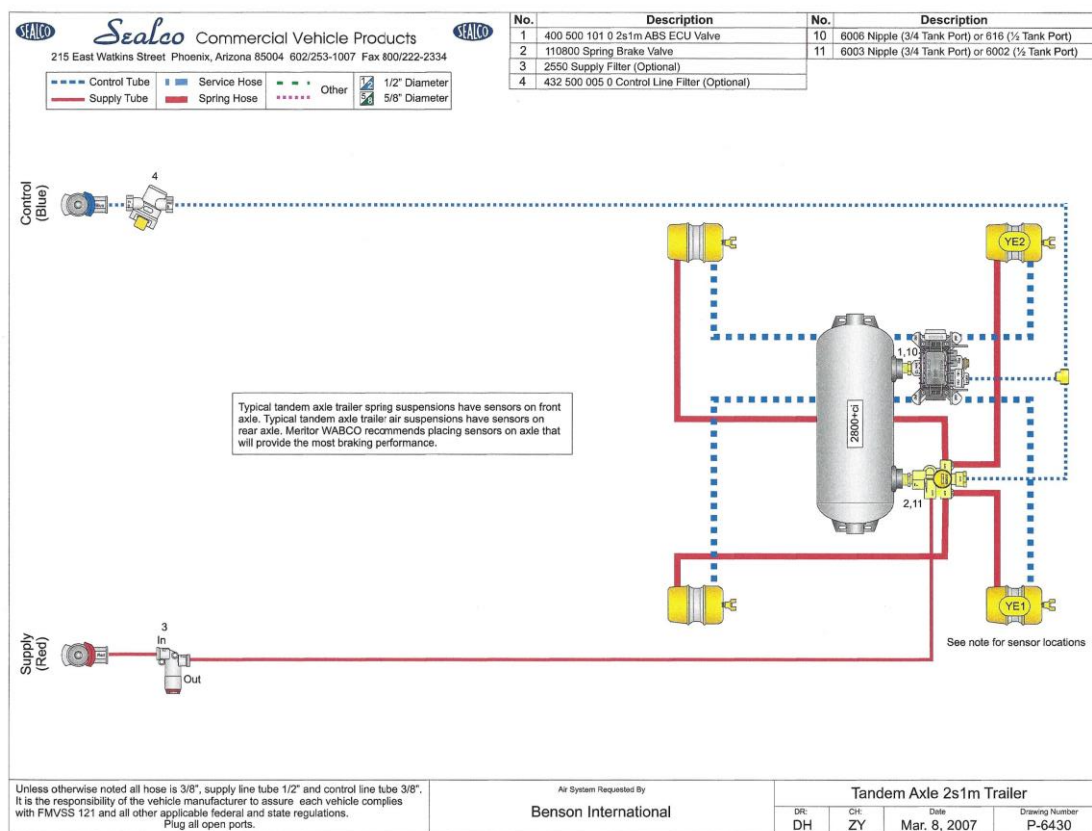
## **Rim and wheels**

Customer Supplied

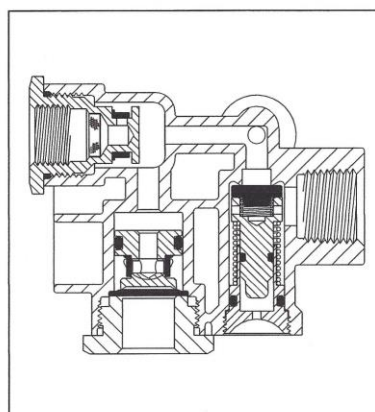
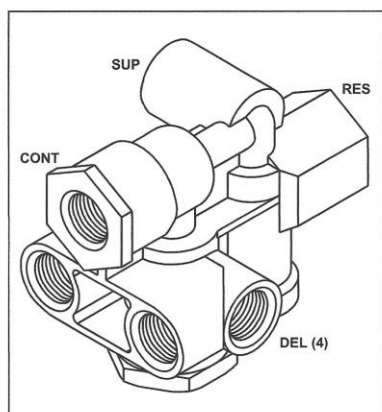
## **Mud Flaps**

24"x 30" all-rubber 3/8" thick mud flaps

## Brake System:

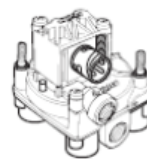
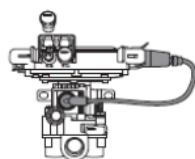


### A) Valve: Sealco 110500 spring brake priority valve system



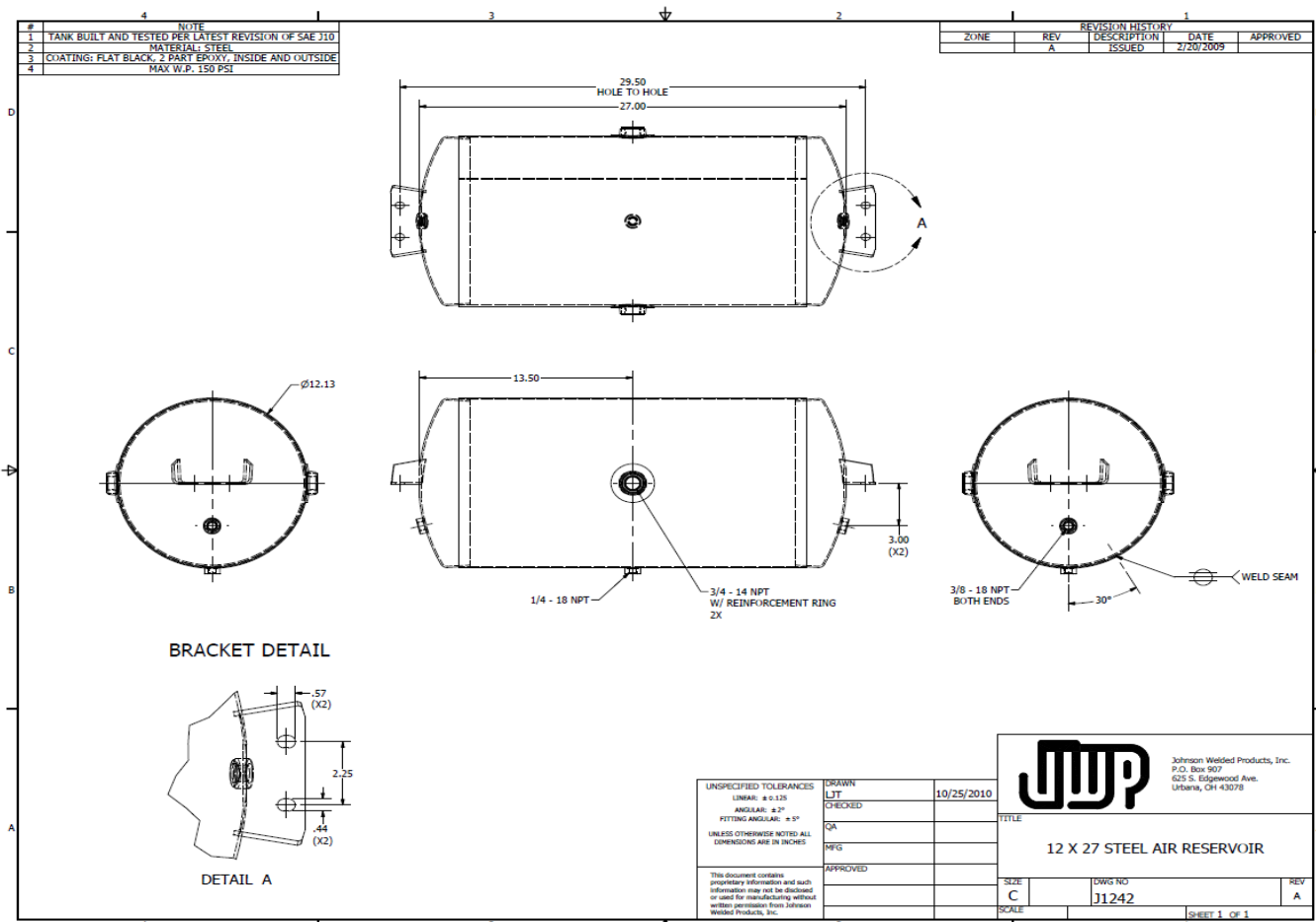
## Wabco 2S/1M ABS system

ECU/Valve Assembly	Description	Service ECU	Service Valve	Bracket
S400 500 101 0	2S/1M Trailers	S446 108 201 0	S472 195 033 0	S478 407 058 4



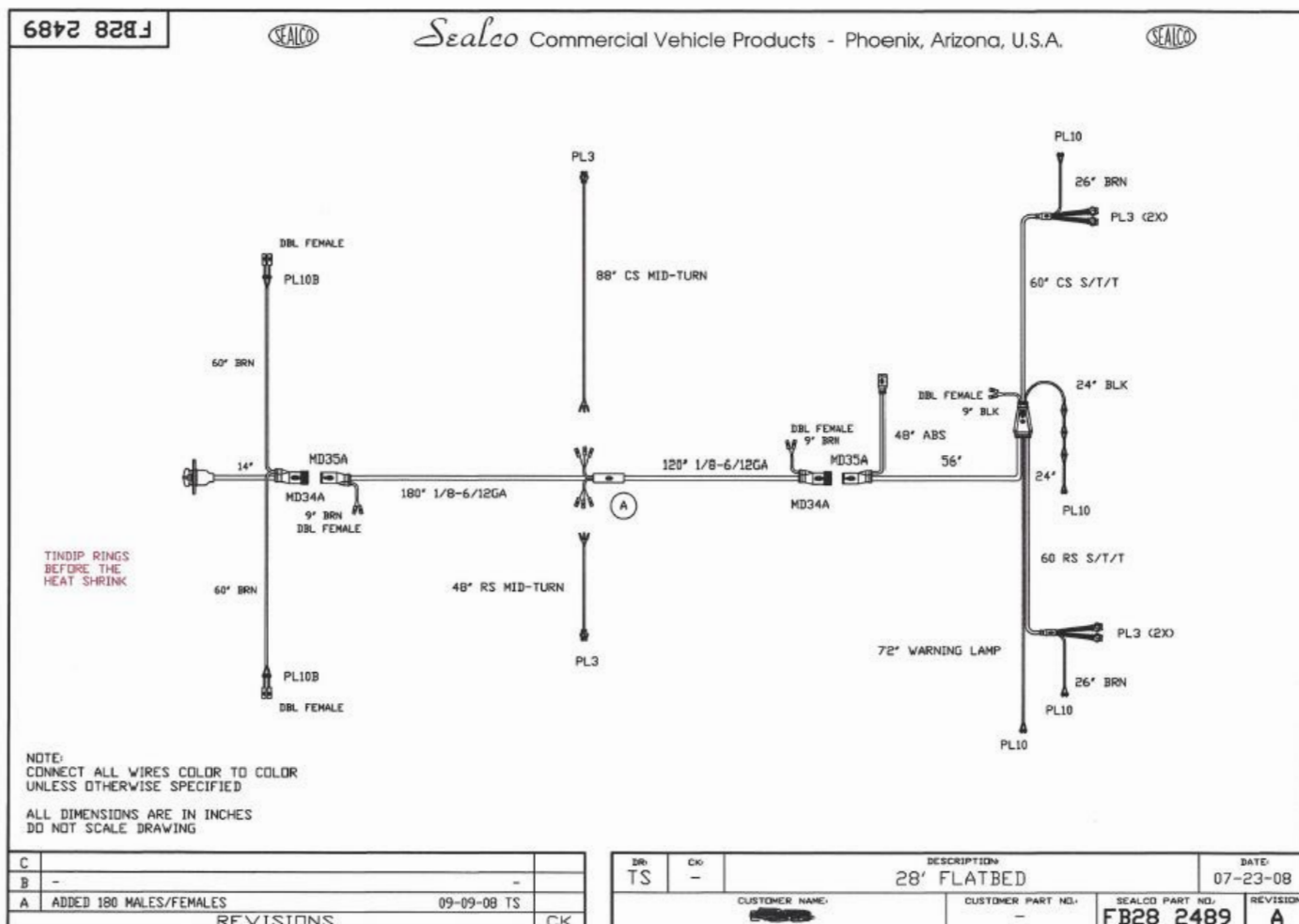
The ABS - ECU unit will be mounted on the frame separately.

### B) One air tank system.



C) Air lines: 3/8" control and 3/8" for supply. Air lines will be secured to the gooseneck, main rail and bolster to avoid chaffing. Airline securement clamps will be rubber covered and adequately protected from corrosion as the means of securing them to the chassis frame so as to facilitate easy 'in-service' removal if needed. As needed hose separators will be used, and hoses will be routed on the top of the cross members. Rubber grommets will be provided at each location where air lines pass through cross members.

## Electrical System



71-7005-00 MAIN HARNESS W/QCS2

21-4095-00 Rear Sill Harness

30-2637-056 Front Market Harness

31-6001-01 GPS Branch Harness

4" Red LED Stop/Tail/Turn Lamp, Flange  
Mount with AMP connector

Clear LED License Lamp with .180 Molded Male  
Bullets

.75" Red LED Clearance/Marker Lamp and  
Grommet with .180 molded

.75 Amber LED Clearance/Marker Lamp and  
Grommet with .180 molded

Conspicuity tape. Preferred supplier: Phillips.

52-99012- Conspicuity tape, 2" x 150' continuous roll

- 2" x 150' roll, 7" (white) x 11" (red) pattern
- Complies with DOT and FMVSS 108 standards
- SAE "A" compliant

Installed per Federal regulations and AAR compliance.

Where possible, white conspicuity tape will be added to 'empty' space on the front face of the front bolster. White tape on rear face of front bolster per AAR.

#### **Registration / Document Holder**

Installed on roadside near crank handle. Supplied by Phillips.

Waterproof – documents remain dry in extreme weather

Stainless steel tether - prevents misplacement of lid

Twist-on lens with large grips – easy to use with gloves

Stainless steel hardware – keeps documents rust free

Mounts with most competitive document holders - 8 mounting holes

Large interior for multiple documents

Conspicuity Tape



#### **Painting**

Metal preparation: abrasive blast of all metal surfaces to achieve clean bare steel per paint suppliers' specification – not less than SA-2. Surface will be coated with marine paint of minimum 70% Zinc - Rich primer (minimum d.f.t. 50 microns) and true acrylic aliphatic polyurethane topcoat (minimum d.f.t. 60 microns) color black.

The areas of the front pin locks and front bolster castings and the rear twist locks will be painted yellow for ease of location in container handling operations.

Coating supplier: **PPG**

#### **Hardware**

A) All fasteners to be minimum grade 5 zinc plated with washers / lock washers as appropriate.

B) Stainless steel fasteners will be used for electrical system.

C) License plate to be SS riveted / mono-bolted to backing plate.

D) If in the horizontal position, nuts to face outside whenever possible. If in the vertical position, nuts to be on the bottom, bolt on top.



#### **DISCLAIMER**

Specifications are believed to be correct, but may contain errors and/or omissions. Photographs are the representative of the subject equipment but may not be identical. Equipment availability, prices and specifications are subject to change without notice.