



## 40'GN Tandem

## Specifications

### 1. Function

Carries one (1) 40' ISO container.

Meets all TOFC, AAR, DOT, FMVSS, ISO, ANSI, SAE and TTMA specifications

### 2. General

<b>Overall Length:</b>	40' 8"	(Excluded rear bumper)
<b>Overall Width:</b>	96"	
<b>Fifth Wheel Height:</b>	48"±1"	
<b>Rear Deck Height:</b>	48"±1"	
<b>Kingpin Location:</b>	30"	(From rear face of front bolster)
<b>Axle Spread:</b>	49"	
<b>Tandem Location:</b>	54"	(From rear face of rear bolster)
<b>Tare Weight:</b>	6,700 Lbs	(±2%)
<b>Gross Vehicle Weight Rating:</b>	73,900 Lbs	

### 3. Steel Structure & Components

<b>Material:</b>	High strength GR50 steel.
<b>Painting:</b>	E-coat primer (minimum 20µm) and Powder coating topcoat (minimum 60µm). 7 years warranty. Galvanized
<b>Main Beam:</b>	W12@19lb/ft hot-rolled H-beam, ASTM A572 Grade 50 or equivalent.
<b>Crossmember:</b>	3/16" thick x 3" wide x 9" deep channel with integral gussets on top.
<b>GN Beam:</b>	5-1/4" deep x 4" wide fabricated H-beam, 1/2" thick flange and 1/4" thick web.
<b>Upper Coupler:</b>	1/4" thick w/ 2" dia. drain holes, reinforced by 1/4" thick channel type kingpin supports. Holland 2" AAR certificated kingpin.
<b>Front Bolster:</b>	8" wide x 10" high, 1/4" thick open section, with 3-1/2" chamfer in full length for gathering container in operation. One piece conner casting welded on both ends.
<b>Rear Bolster:</b>	8" wide x 3/8" thick top plate with 6-7/8" wide x 8" deep x 1/4" thick "U" channel.
<b>Rear Bumper:</b>	4" x 4" square type step bar supported by H type posts
<b>Front Locking Pin:</b>	Schulz FB99HL-A or Buffers 1213.
<b>Rear Twist Lock:</b>	Schulz F77ANS or Buffers 1257.
<b>Landing Gear:</b>	Holland 55,000 lbs capacity, 2-speed 17" travel, low profile sand shoe. Roadside crank handle.
<b>Suspension:</b>	Holland mechanism suspension w/ spring 354-00.
<b>Axles:</b>	Holland 5" round axles with 22,500 lb capacity, 71-1/2" track, Haldex 28 spline, 5.5" automatic slack adjusters. 16-1/2" x 7" Q Brake.
<b>Lubricant:</b>	Stemco seal, Mobilith SHC 007 synthetic grease lubricant with metal hubcap.
<b>Hub &amp; Drum:</b>	10 stud hub piloted hubs with outboard mounting cast steel drum.
<b>Rims:</b>	Jingu 22.5 x 8.25 hub-piloted wheels.
<b>Tires:</b>	Westlake 295/75R22.5 tubeless type, 14 ply, CR915.
<b>Brake System:</b>	WABCO 2S/1M ABS brake system, spring brake priority. Phillips 12-008/12-006 gladhand and Haldex type 3030 2.5" stroke break chamber.
<b>Electrical:</b>	Truck-Lite 12 volt LED lighting system with Phillips modular wiring harness. The theftproof design used for 4" LED lighting.
<b>MISC:</b>	CIMC standard marking, Conspicuity tape, Document holder, 24" X 30" Black rubber mud flap with CIE logo.
<b>Option:</b>	PSI tire inflation system, with LED indicator lamp. Without Thermo-Alert.

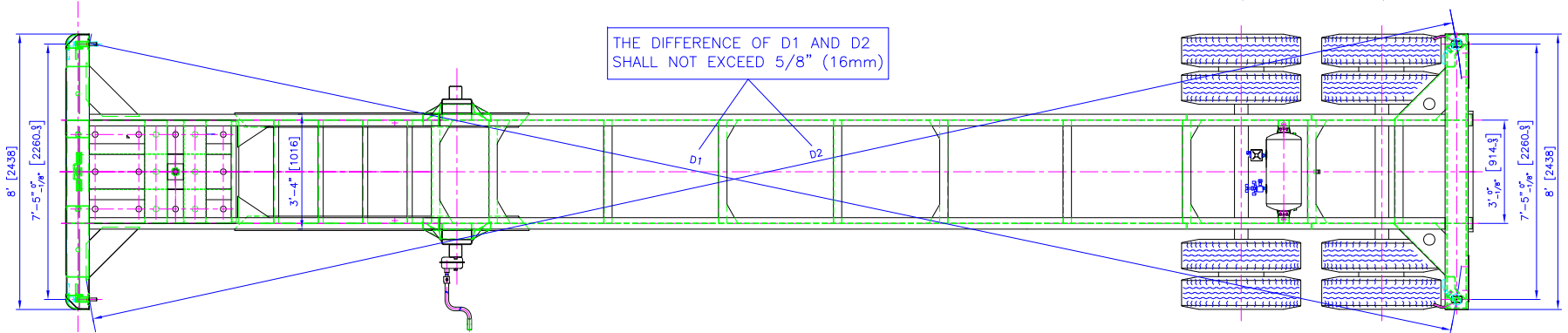
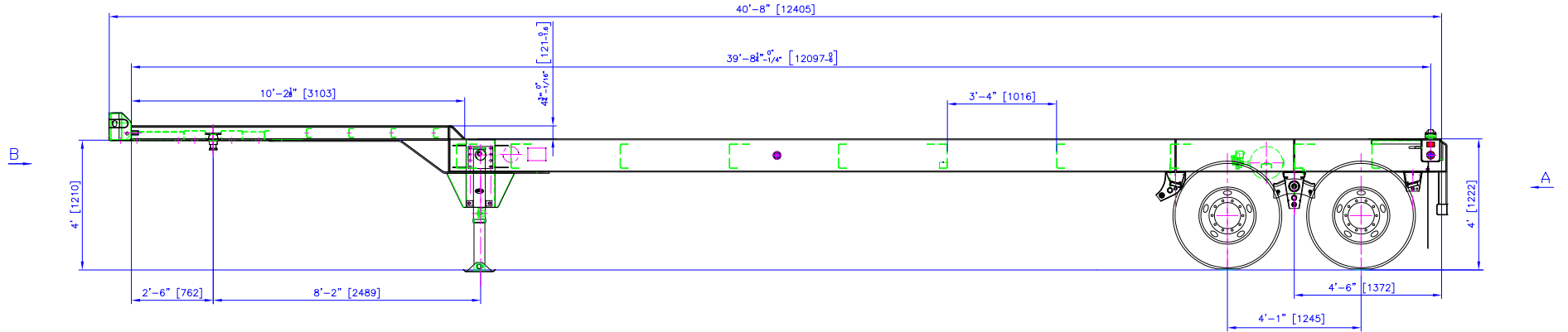
#### DISCLAIMER

Specifications are believed to be correct, but may contain errors and/or omissions. Photographs are the representative of the subject equipment but may not be identical. Equipment availability, prices and specifications are subject to change without notice.

Dwg No.:

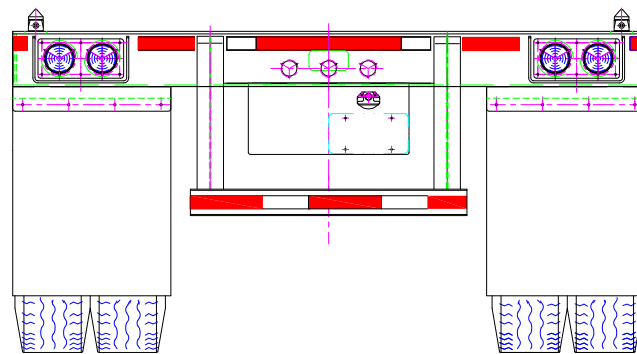
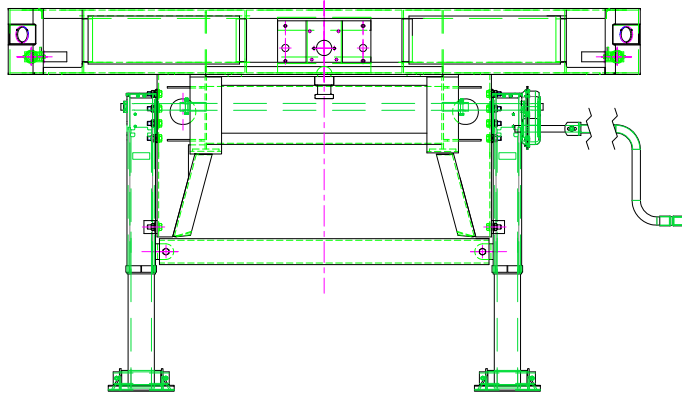


SYM	QTY	CODE	SIGN	DATE



VIEW B  
1:20

VIEW A  
1:20



CIMC CIMC VEHICLES GROUP CO., LTD. - CVGC			
Title: 40' GOOSENECK TANDEM CHASSIS			
Drawn:		Mat'l:	Scale: 1:40
ENG. Check:		Wt(kg):	
PROC. Check:		Dwg No.:	
STD. Check:		Sheet 1 of 1	Revision:
Approved:			