



23.5'SL Tandem

Specifications

1. Function

Carries one (1) 20' ISO container.

Meets all TOFC, AAR, DOT, FMVSS, ISO, ANSI, SAE and TTMA specifications

2. General

Overall Length:	23' 6"/27' 6"	(Excluded rear bumper)
Overall Width:	96"	
Fifth Wheel Height:	48"±1"	
Rear Deck Height:	52"±1"	
Kingpin Location:	18"	(From front end of chassis)
Axle Spread:	49"	
Tandem Location:	54"	(From rear face of rear bolster)
Tare Weight:	6,900 Lbs (±2%)	
Gross Vehicle Weight Rating:	74,100 Lbs	

3. Steel Structure & Components

Material:	High strength GR50 steel.
Painting:	E-coat primer (minimum 20µm) and Powder coating topcoat (minimum 60µm). 7 years warranty. Color galvanized.
Main Beam:	W12@19lb/ft hot-rolled H-beam, ASTM A572 Grade 50 or equivalent.
Crossmember:	Fabricated channel with integral gussets on top.
Front Rail:	6-1/2" deep x 6" wide fabricated H-beam, 1/2" thick flange and 5/16" thick web.
Slider:	4-5/8" x 6" x 5/16" tubular with positive safety solid bar stop. 2 spring loaded pins lock the slider frame to main frame in retracted or extended location.
Upper Coupler:	1/4" thick w/ 2" dia. drain holes, reinforced by channel type king pin support. Holland 2" AAR certificated kingpin.
Front Bolster:	8" wide x 3/8" thick top plate with 6-7/8" wide x 6" deep x 5/16" thick "U" channel.
Rear Bolster:	8" wide x 3/8" thick top plate with 6-7/8" wide x 7" deep x 5/16" thick "U" channel.
Rear Bumper:	4" x 4" square type step bar supported by H type posts
Twist Locks:	Schulz F77ANS or Buffers equivalent.
Landing Gear:	Holland 55,000 lbs capacity, 2-speed 19" travel, low profile sand shoe. Roadside crank handle.
Suspension:	Holland mechanism suspension w/ three leaf spring 356-00.
Axles:	Holland 5" round axles with 22,500 lb capacity, 71-1/2" track, Haldex 28 spline, 5.5" automatic slack adjusters. 16-1/2" x 7" Q Brake.
Lubricant:	Stemco seal, Mobilith SHC 007 synthetic grease lubricant with metal hubcap.
Hub & Drum:	10 stud hub piloted hubs with outboard mounting cast steel drum.
Rims:	Jingu 22.5 x 8.25 hub-piloted wheels.
Tires:	Westlake 295/75R22.5 tubeless type, 14 ply, CR915.
Brake System:	WABCO 2S/1M ABS brake system, spring brake priority. Phillips 12-008/12-006 gladhand and Haldex type 3030 2.5" stroke break chamber.
Electrical:	Truck-Lite 12 volt LED lighting system with Phillips modular wiring harness. The theftproof design used for 4" LED lighting.
MISC:	CIMC standard marking, Conspicuity tape, Document holder, 24" X 24" Black rubber mud flap with CIE logo.
Option:	PSI tire inflation system, with LED indicator lamp. Without Thermo-Alert.

CIMC VEHICLES GROUP CO., LTD.

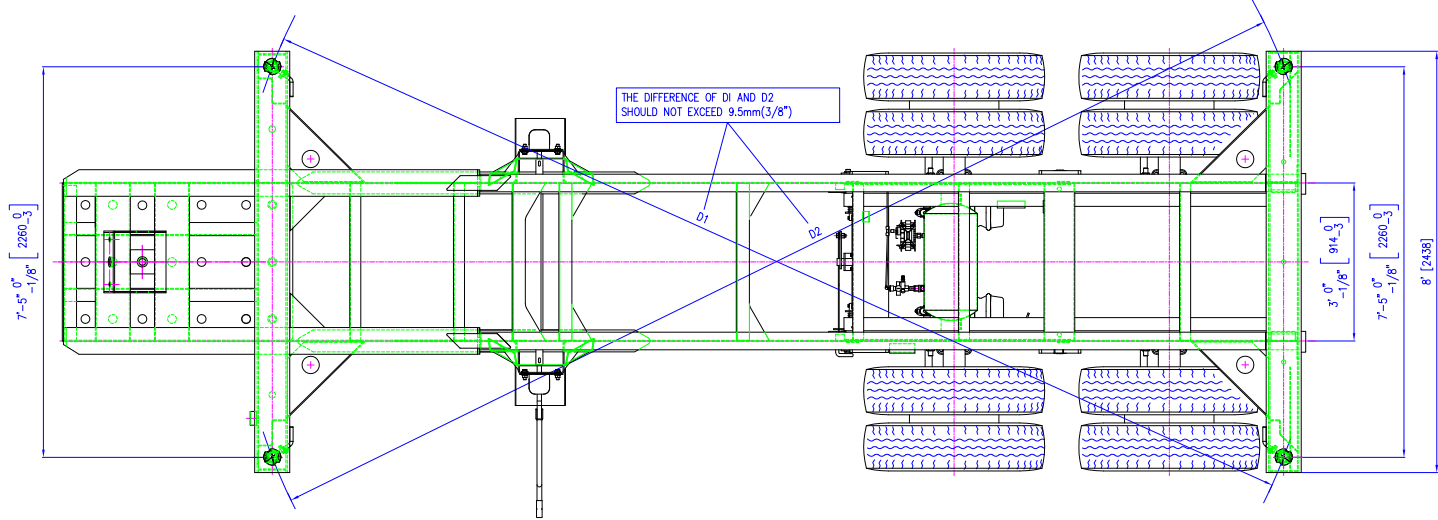
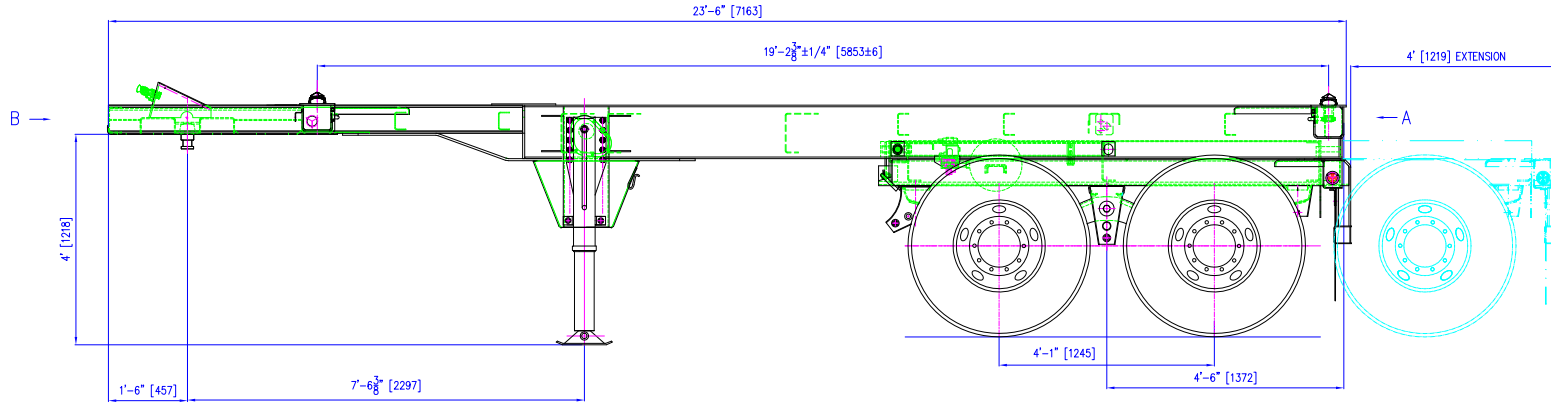
DISCLAIMER

Specifications are believed to be correct, but may contain errors and/or omissions. Photographs are the representative of the subject equipment but may not be identical. Equipment availability, prices and specifications are subject to change without notice.

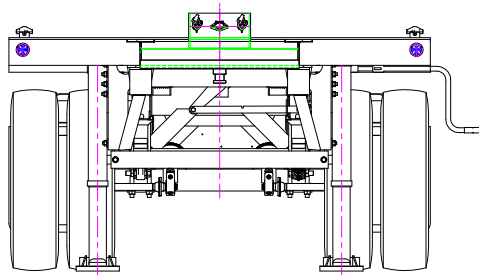
Dwg No.:



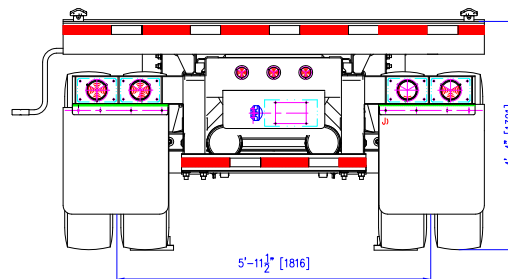
SYM	QTY	CODE	SIGN	DATE



VIEW B



VIEW A



CIMC CIMC VEHICLES GROUP CO., LTD. - CVGC

Title: 23.5" SLIDER CHASSIS

Drawn:		Mat'l:	Scale: 1:30
ENG. Check:		Wt(kg):	
PROC. Check:		Dwg No.:	
STD. Check:		Sheet 1 of 1	Revision:
Approved:			