



A014031-A014060
VIN: 570332-570361

SALES | RENTALS | PARTS | SERVICE

Allentown, PA:	800-383-8894	Jacksonville, FL:	800-828-3055
Baltimore, MD:	888-601-7500	Little Rock, AR:	833-424-8944
Boston, MA:	800-854-5310	Portland, ME:	800-325-4253
Concord, NC:	800-438-2250	Richmond, VA:	866-839-3495
Delmar, DE:	866-486-1400	Scranton, PA:	800-569-1400
Des Moines, IA:	888-673-5011	Springfield, MA:	800-854-5306
Elkton, MD:	800-544-7127	Voorhees, NJ:	866-315-0235

HaleTrailer.com | @haletrailer     

800-232-6535 *FINANCING AVAILABLE

Velocity 48' Spring Slider (Model: HAVSF12SST)

Length / Width: 48 feet x 102 inches
Suspension Type: Sliding spring tandem; This Trailer Design Does NOT Meet Proposed GHG2 Compliance Requirements
Frame Rating: 80,000 lbs distributed - GAWR and tire ratings determine legal payloads
Flooring: 1 1/8 inch wood
Crossmembers: 12 inch centers - 4 inch jr. I-steel
Side Rails: 6 inch structural channel @ 6.5 lbs/ft
Stake Pockets: 3/16 inch steel on 24 inch centers
Pipe Spools: Double between stake pockets
Rubrail: 3/8 inch x 2 1/2 inch steel
Main Beams: 130K load bearing flanges
Kingpin: 30 inches
Loaded Fifth Wheel Height: 49 inches
Landing Gear: OEM Standard with Forward & Rear Bracing
Knee Braces: Fabricated on approx. 60 inch C/C
Bulkheads: Removable steel 4 post DOT type bulkhead - no turnback - 48 inches high
Bulkhead Pockets: 4 - F-5 DOT-type steel
Number of Axles: 2
Axle Spindle: Tapered
Brakes: Spring brakes, auto slacks
Air Line Filters: (2) Meritor In-line type installed
ABS: 4S/2M - no cable or tool
Axle Spread: 49 inches
Hub and Drums: 10-hole hub-piloted with outboard cast drums
Wheel Ends: Oil in hubs
Wheels: 22.5 x 8.25 steel disc wheels - pre-painted white - STANDARD
Tires: 11R 22.5 14PR OEM standard tires
Tire Inflation System: None standard
Suspension Detail: OEM Standard 3-leaf spring slider - 60 inches adjustable
Front Corners: Tapered
Electrical System: LED: 3 lights/side, 2 lights/side on rear- STANDARD
Paint: Black urethane with Velocity decals - STANDARD
Conspicuity Tape: Per NHTSA specs - installed on rubrails
Bumper: Weld-on type - meets underride requirements
Mudflaps: 1 set OEM standard
Spare Tire Carrier: None standard
Winch Track: Steel on road side
Sliding Winches: 12 standard
27 foot Winch Straps: None standard
30 foot Winch Straps: None standard
Dock Bumpers: 1 pair rubber on rear
Hubodometer: None standard
Registration Holder: Install registration holder - OEM standard
Tool Box: None standard
VIN Plate: Bilingual US/Canadian VIN plate

DISCLAIMER

Specifications are believed to be correct, but may contain errors and/or omissions. Photographs are the representative of the subject equipment but may not be identical.
Equipment availability, prices and specifications are subject to change without notice.

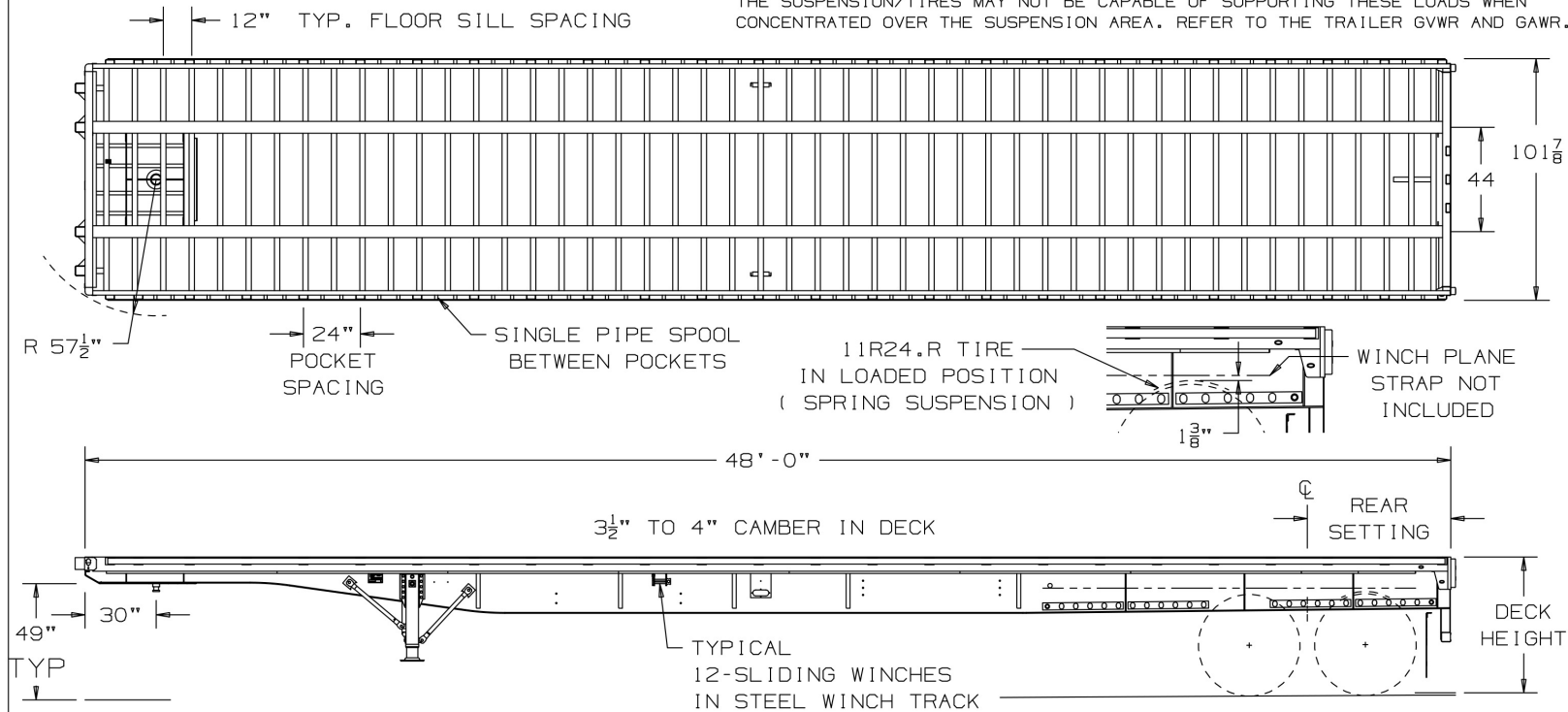
THIS DOCUMENT REMAINS PROPERTY OF FONTAINE TRAILER COMPANY. ITS CONTENTS ARE CONFIDENTIAL AND PROPRIETARY. DO NOT REPRODUCE, USE OR DISCLOSE ANY INFORMATION WITHOUT WRITTEN CONSENT FROM FONTAINE TRAILER COMPANY.

SUSPENSION TABLE					
SUSPENSION	TIRE SIZE	REAR DECK HT. LIGHT	REAR DECK HT. LOADED	SUSP. REAR SETTING	KING PIN TO REAR AXLE
HUTCH, H9700 on H-900-38 SLIDE BOX, 3-LEAF SPRINGS H356-00, DWG# 03706072	295/75R 22.5, 14-PLY	57"	55 $\frac{1}{4}$ "	60 $\frac{1}{2}$ "	37'-6" FRONT SETTING
	11R 24.5 14-PLY	58 $\frac{1}{4}$ "	56 $\frac{1}{2}$ "		42'-6" REAR SETTING

FRAME RATINGS	
DISTRIBUTED	80,000
COIL	46,400
60"	49,405
120"	52,885
180"	56,900

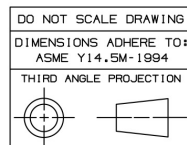
NOTE:

FRAME RATINGS DENOTE WHAT THE TRAILER FRAME IS CAPABLE OF SUPPORTING. THE SUSPENSION/TIRES MAY NOT BE CAPABLE OF SUPPORTING THESE LOADS WHEN CONCENTRATED OVER THE SUSPENSION AREA. REFER TO THE TRAILER GVWR AND GAWR.



KING PIN HEIGHT RANGE

47"
48"
49" (TYPICAL)
50"



TOLERANCES
UNLESS OTHERWISE
SPECIFIED
FRACTIONS: $\pm \frac{1}{16}$
DECIMALS: $\pm .06$
HOLES: $\pm .005$
ANGLES: $\pm 2^\circ$
UNITS OF DIMENSION ARE:
INCHES

DRAWN BY *	DATE *
CHECKED BY	DATE
APPROVED BY	DATE

FONTAINE TRAILER CO.
HALEYVILLE, AL

TITLE:
HAVSF 12SST

PRINTED OR COPIED DOCUMENT
IS UNCONTROLLED DOCUMENT
UNLESS STAMPED ORIGINAL

SIZE: A	SCALE: ***	SHEET: 1 OF 1
DRAWING NUMBER 19233-SALES		REV. 0