



A014800-A014805
VIN: 66437-66442



SALES | RENTALS | PARTS | SERVICE

Allentown, PA:	800-383-8894	Jacksonville, FL:	800-828-3055
Baltimore, MD:	888-601-7500	Little Rock, AR:	833-424-8944
Boston, MA:	800-854-5310	Portland, ME:	800-325-4253
Concord, NC:	800-438-2250	Richmond, VA:	866-839-3495
Delmar, DE:	866-486-1400	Scranton, PA:	800-569-1400
Des Moines, IA:	888-673-5011	Springfield, MA:	800-854-5306
Elkton, MD:	800-544-7127	Voorhees, NJ:	866-315-0235

HaleTrailer.com | @haletrailer     

800-232-6535 *FINANCING AVAILABLE

Revolution 52 Alum Flat 48' Wide Spread Air (Model: HAR5212WSA)

Length / Width: 48 feet x 102 inches
Suspension Type: Wide spread air
Frame Rating: 80,000 lbs distributed - 52,000 lbs concentrated in 4 feet- GAWR and tire ratings determine legal payloads
Flooring: Knurled extruded 3-1/8 aluminum, StirLITE Friction Stir Welded Floor with 2 wood nailer strips; Heavy wall extrusions in single coil area; Heavy wall extrusion at rear
Side Rails: Exclusive Revolutionary RASR Rail Technology -- one piece routed aluminum designed for strength and impact
Stationary Chain Cargo Tie Downs: 15 pair - recessed in siderails
Stake Pockets: Routed Aluminum on 24 inch centers (2 load securement openings in between stake pockets)
Rubrail: Integrated with side rail
Main Beams: Extruded aluminum - 8.25 inch flange
Kingpin: 30 inches
Loaded Fifth Wheel Height: 49 inches
Landing Gear: Jost AX100G19 ALUMILIGHT Aluminum Landing Gear with forward & rear bracing
Bulkheads: None standard
Number of Axles: 2
Axle Spindle: Tapered
Brakes: Spring brakes, auto slacks, Aluminum air tank
Air Line Filters: (2) Meritor In-line type installed
ABS: 4S/2M - no cable or tool
Axle Spread: 122 inches - set at rear
Hub and Drums: 10-hole hub-piloted with outboard cast drums - STANDARD
Wheel Ends: Grease in hubs - *** 5-year wheel end warranty ***
Wheels: 22.5 x 8.25 aluminum Lvl One buffed wheels
Tires: 11R 22.5 14PR premium OEM standard tires
Tire Inflation System: None standard
Suspension Detail: Hendrickson AANT23K Intraax air ride
Auto Glad Hand Dump: Installed
Electric Dump Valve: Wired to 7-way auxiliary socket to dump rear axle
Air Lift: None standard
Front Corners: Tapered
Electrical System: LED: 5 Lights/Side; Rear with 3 4-inch Round Lights/Side, 3 Round Lights Center Cluster
Other Electrical Specifications: 4 way socket on rear with one hot/one ground pin for wide load and strobe light connections
Paint: Black urethane on steel parts with Revolution decals - STANDARD
Conspicuity Tape: Per NHTSA specs - installed in recess on rubrails
Bumper: Bolt-On; Meets underride requirements
Mudflaps: 2 sets OEM standard; Spring loaded brackets behind front axle
Spare Tire Carrier: None standard
Winch Track: Dual full-length integrated aluminum -- double L design
Sliding Winches: 12 standard; 6 each side; sliding rope hook/ winch strap hook retainers - STANDARD
27 foot Winch Straps: None standard
30 foot Winch Straps: None standard
Sliding J-Hook for Ring vs. Flat Hook on 4" Strap: None standard
Dock Bumpers: 1 pair rubber on rear
Hubodometer: None standard
Registration Holder: Install registration holder - OEM standard
Tool Box: None standard
VIN Plate: Bilingual US/Canadian VIN plate
Please Note: Price includes commodity surcharges
Unit Numbers & Decals: Not available

DISCLAIMER

Specifications are believed to be correct, but may contain errors and/or omissions. Photographs are the representative of the subject equipment but may not be identical.
Equipment availability, prices and specifications are subject to change without notice.

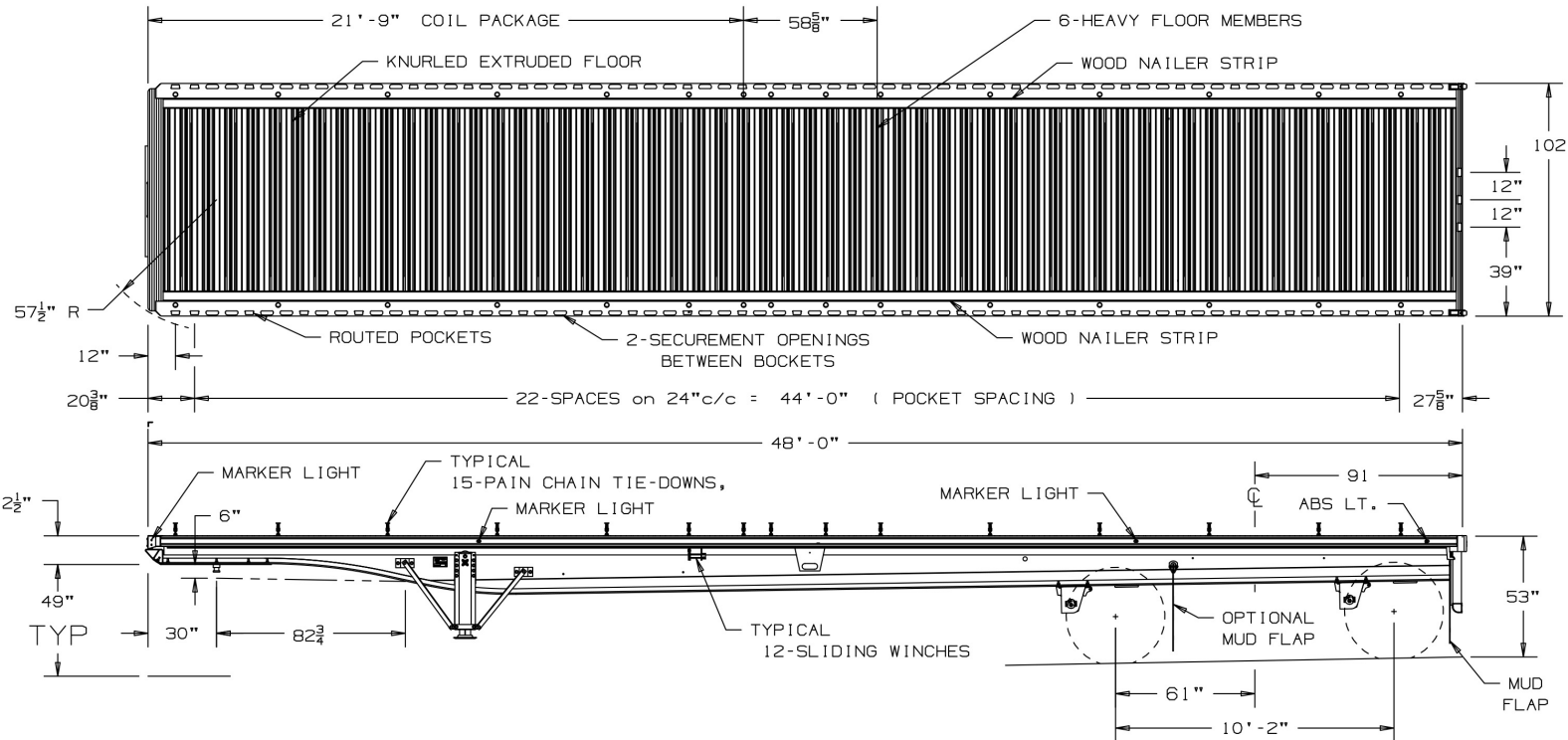
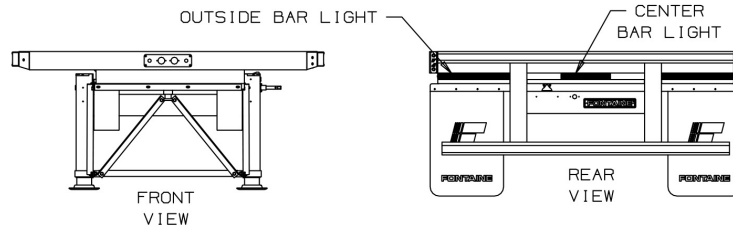
THIS DOCUMENT REMAINS PROPERTY OF FONTAINE TRAILER COMPANY. ITS CONTENTS ARE CONFIDENTIAL AND PROPRIETARY. DO NOT REPRODUCE, USE OR DISCLOSE ANY INFORMATION WITHOUT WRITTEN CONSENT FROM FONTAINE TRAILER COMPANY.

NOTE:

FRAME RATINGS DENOTE WHAT THE TRAILER FRAME IS CAPABLE OF SUPPORTING. THE SUSPENSION/TIRES MAY NOT BE CAPABLE OF SUPPORTING THESE LOADS WHEN CONCENTRATED OVER THE SUSPENSION AREA. REFER TO THE TRAILER GVWR AND GAWR.

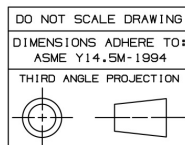
FRAME RATINGS

DISTRIBUTED	80,000
48"	52,000



KING PIN HEIGHT RANGE

47"
48"
49" (TYPICAL)
50"



TOLERANCES UNLESS OTHERWISE SPECIFIED

FRACTIONS: ± 1/16

DECIMALS: ± .06

HOLES: ± .005

ANGLES: ± 2°

UNITS OF DIMENSION ARE: INCHES

DRAWN BY	DATE
CHECKED BY	DATE
APPROVED BY	DATE

FONTAINE TRAILER CO.
HALEYVILLE, AL

TITLE: HAR5212WSA

PRINTED OR COPIED DOCUMENT IS UNCONTROLLED DOCUMENT UNLESS STAMPED ORIGINAL	
SIZE: A	SHEET: 1 OF 1
DRAWING NUMBER 18732_SALES	REV. C

0	CR*	*	*	*
REV.	ECR NO.	DESCRIPTION	BY	DATE