

HALE

TRAILER

BRAKE & WHEEL



A018126-A018133
VIN: 85865-85872

SALES | RENTALS | PARTS | SERVICE

Allentown, PA:	800-383-8894	Jacksonville, FL:	800-828-3055
Baltimore, MD:	888-601-7500	Little Rock, AR:	833-424-8944
Boston, MA:	800-854-5310	Portland, ME:	800-325-4253
Concord, NC:	800-438-2250	Richmond, VA:	866-839-3495
Delmar, DE:	866-486-1400	Scranton, PA:	800-569-1400
Des Moines, IA:	888-673-5011	Springfield, MA:	800-854-5306
Elkton, MD:	800-544-7127	Voorhees, NJ:	866-315-0235

HaleTrailer.com | @haletrailer

800-232-6535 *FINANCING AVAILABLE

ALUMINUM "BST II" PLATFORM TRAILER

LENGTH:	48' - 24" BEAM	SUSPENSION:	AAT25K/E2-1 REAR AXLE SLIDER (2)
WIDTH:	102"	LOWERING KIT:	AUTOMATIC
NOSE:	SQUARE + EXTRA 6 WAY CONNECTOR (1)(4)	AXLE TO AXLE:	56" & 125" (2)
KING PIN SETTING:	30" - 5/16" PLATE - NO ACCESS HOLES	AXLE TO REAR:	46"
FLOOR:	KNURLED ALUMINUM 3 NAILERS INTEGRATED SIDE RAIL	LIFT / AXLE:	N/A
XMEMBER SPACING:	16" SPACING	SPACING:	N/A
COIL PACKAGE:	YES (CENTER)-W/ 8 PCS BAR INSERT	F.W. HEIGHT:	49"
SPOOLS:	DOUBLE	CONTROLS:	N/A
POCKETS:	HD FRONT TO ACCEPT AERO BH - SEE DWG	AXLES:	TP 23,000 GAWR
ROPE HOOKS:	NONE	AUTO SLACKS:	MERITOR
TIE DOWNS:	TWO TIE DOWN STORAGE PIPES D/S @ LG	BRAKES:	16 1/2" X 7"
MARKER LIGHTS:	LED - 7 PR EA. SIDE	ABS SYSTEM:	4S/2M
MID TURN SIGNAL:	MMTS BELOW RAIL - INBOARD	HUBS:	10 STUD LW STEEL LWBD
FLAT <input checked="" type="radio"/> ANGLED <input type="radio"/>		WHEELS:	8.25 X 22.5 8 HP / 4 MP
LIGHT PANEL:	LED - 9 LIGHTS (OOO ooo OOO) 1/2 STEPS ON REAR FULL WIDTH BUMPER	TIRES:	11R 22.5 R196A BRIDGESTONE
BULKHEAD:	NONE	LANDING GEAR:	JOST AX150 ALUMILIGHT D/S CRANK FORWARD BRACING (3)
TYPE:		TIRE CARRIER:	BRACKETS ONLY - P/S ACCESS MID TRAILER
HEIGHT:		TOOLBOX:	QTY: NONE
RETURNS:		SIZE:	
MAT'L:		LOCATION:	
ACCENT TAPE:	BLACK	MAT'L:	
PAINT:	BLACK SOFTCOAT BLACK ON SUSPENSION	MUDFLAPS:	STD
WINCH TRACK:	STANDARD INTEGRATED RAIL	TYPE:	SILVER PLASTIC
LOCATION:		LOCATION:	ON REAR OF SLIDER BOX + 3/16" ALUMINUM ON TOP OF SLIDER FLAP BENT TOWARD TIRE
WINCHES:	12 - EA. EXTREME ZINC - D/S		
WINCH CLIPS:	12 - EA. SLIDING CLIPS - P/S		
STRAPS:	NONE		

REMARKS: PRICE SUBJECT TO CHANGE 12 WEEKS PRIOR TO ESTIMATED BUILD DATE

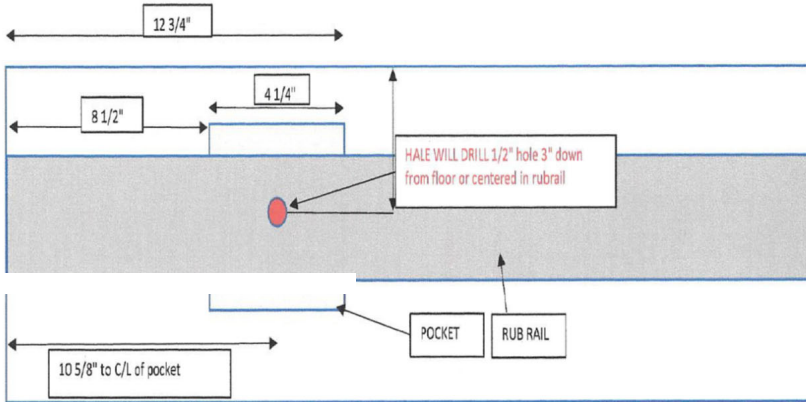
WEIGHT: +/-3%: 9870

- EXTRA 6 WAY WIRED TO JUNCTION BOX D/S INSIDE FRAME IN FRONT OF AXLE #1.
- 2 POSITION REAR AXLE SLIDER - SLIDER BOX INSIDE MAIN FRAME RAILS. SLIDER BOX AND REAR HANGERS TO BE BLACK SOFTCOAT - GALVANIZED HANGERS ON FRONT AXLE ONLY.
- TRUCKLITE REGISTRATION HOLDER D/S @ LANDING GEAR
- WIRING BACK 3" FROM INSIDE NOSE

DISCLAIMER

Specifications are believed to be correct, but may contain errors and/or omissions. Photographs are the representative of the subject equipment but may not be identical. Equipment availability, prices and specifications are subject to change without notice.

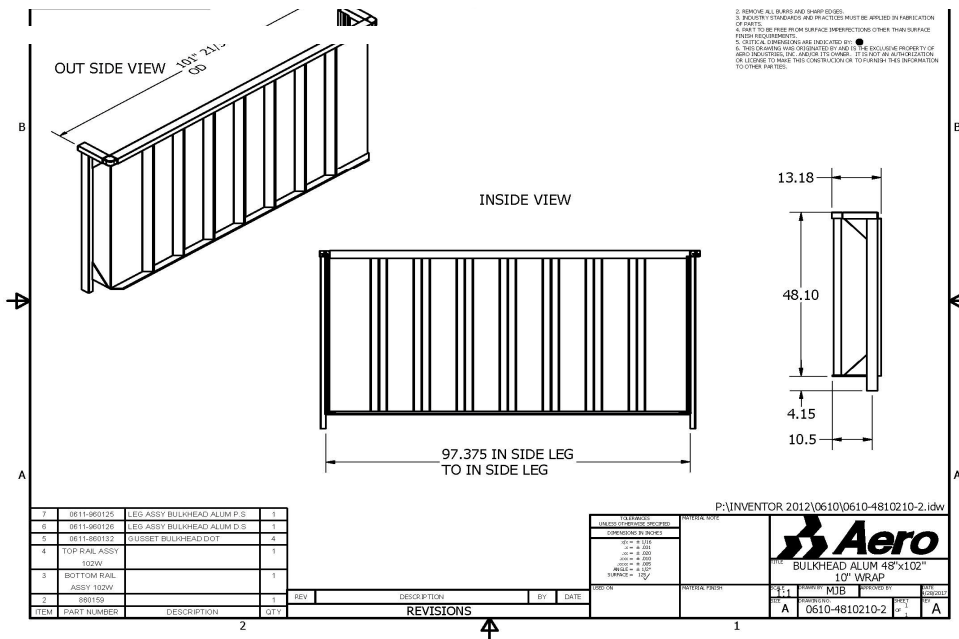
FRONT-----SIDE VIEW OF TRAILER -----REAR



ELECTRICAL HARNESS TO BE BELOW OR ABOVE 1/2" HOLE



WIRING HARNESS TO BE LOCATED 3" REARWARD OF INSIDE 90 DEGREE ANGLE (STANDARD LOCATION OF HARNESS) ALL THE WAY ACROSS THE FRONT OF THE TRAILER



- 2. REMOVE ALL BURRS AND SHARP EDGES.
- 3. FINISH TO DIMENSIONS AND PRACTICES MUST BE APPLIED IN FABRICATION OF PARTS.
- 4. PART TO BE FREE FROM SURFACE DEFECTS OTHER THAN SURFACE FINISH REQUIREMENTS.
- 5. VERTICAL DIMENSIONS ARE INDICATED BY ϕ .
- 6. THIS DRAWING HAS BEEN PREPARED BY AND IS THE SOLE PROPERTY OF AERO INDUSTRIAL, INC. AND/OR ITS OWNER. IT IS NOT AN AUTHORIZATION OR LICENSE TO MAKE THIS COMPONENT OR TO DISSEMINATE THIS INFORMATION TO OTHER PARTIES.

7	RE11-890126	LEG ASSY BULKHEAD ALUM P.D	1
6	RE11-890126	LEG ASSY BULKHEAD ALUM D.S	1
5	RE11-890132	GUSSET BULKHEAD.DOT	4
4	TOP RAIL ASSY	102W	1
3	BOTTOM RAIL ASSY	102W	1
2	880159		1
ITEM	PART NUMBER	DESCRIPTION	QTY

REV	DESCRIPTION	BY	DATE

P:\INVENTOR 2012\0610\0610-4810210-2.idw

TITLE: BULKHEAD ALUM 48"x102" 10" WRAP DESIGNED BY: MIB CHECKED BY: A DATE: 0610-4810210-2	AERO BULKHEAD ALUM 48"x102" 10" WRAP DESIGNED BY: MIB CHECKED BY: A DATE: 0610-4810210-2
--	---