

HALE TRAILER

BRAKE & WHEEL

ALUMINUM "BST" PLATFORM TRAILER



A018289-A018292

VIN: 85894-85897

SALES | RENTALS | PARTS | SERVICE

Allentown, PA: 800-383-8894	Jacksonville, FL: 800-828-3055
Baltimore, MD: 888-601-7500	Little Rock, AR: 833-424-8944
Boston, MA: 800-854-5310	Portland, ME: 800-325-4253
Concord, NC: 800-438-2250	Richmond, VA: 866-839-3495
Delmar, DE: 866-486-1400	Scranton, PA: 800-569-1400
Des Moines, IA: 888-673-5011	Springfield, MA: 800-854-5306
Elkton, MD: 800-544-7127	Voorhees, NJ: 866-315-0235

HaleTrailer.com | @haletrailer     

800-232-6535 *FINANCING AVAILABLE

LENGTH: 53'	SUSPENSION: AAT30K/E2-L-LIFT REAR AXLE SLIDER (2) FRONT AXLE LIFT
WIDTH: 102"	LOWERING KIT: AUTOMATIC
NOSE: SQUARE + EXTRA STD 7 WAY CONNECTOR (1)(4)	AXLE TO AXLE: 60" CLOSED AND 121" OPEN
KING PIN SETTING: 30" - 5/16" PLATE - NO ACCESS HOLES	AXLE TO REAR: CALIFORNIA LEGAL
FLOOR: KNURLED ALUMINUM 3 NAILERS INTEGRATED SIDE RAIL	LIFT / AXLE: AXLE #1
XMEMBER SPACING: 16" SPACING	SPACING: N/A
COIL PACKAGE: YES (CENTER)-W/ 8 PCS BAR INSERT	F.W. HEIGHT: 49"
SPOOLS: DOUBLE	CONTROLS: FRAME SWITCH & ELEC CC WIRED TO AUX. (5)
POCKETS: HD FRONT TO ACCEPT AERO BH - SEE DWG	AXLES: TP 23,000 GAWR
ROPE HOOKS: NONE	AUTO SLACKS: MERITOR
TIE DOWNS: TWO TIE DOWN STORAGE PIPES D/S @ LG	BRAKES: 16 1/2" X 7"
MARKER LIGHTS: LED - 7 PR EA. SIDE	ABS SYSTEM: 4S/2M
MID TURN SIGNAL: MMTS BELOW RAIL - INBOARD	HUBS: 10 STUD LW STEEL LWBD
FLAT <input checked="" type="radio"/> ANGLED <input type="radio"/>	WHEELS: 8.25 X 22.5 8 HIGH POLISHED
LIGHT PANEL: LED - 9 LIGHTS (OOO ooo OOO) 1/2 STEPS ON REAR FULL WIDTH BUMPER	TIRES: 11R 22.5 R196A BRIDGESTONE
BULKHEAD: NONE	LANDING GEAR: JOST AX150 ALUMILIGHT D/S CRANK FORWARD BRACING (3)
TYPE:	TIRE CARRIER: ONE - P/S ACCESS MID TRAILER
HEIGHT:	TOOLBOX: QTY: ONE
RETURNS:	SIZE: 24" X 24" X 60"
MAT'L:	LOCATION: D/S-AHEAD OF AXLE #1
ACCENT TAPE: BLACK	MAT'L: DOUBLE DOOR, SMOOTH ALUMINUM
PAINT: BLACK SOFTCOAT BLACK ON SUSPENSION	MUDFLAPS: STD
WINCH TRACK: STANDARD INTEGRATED RAIL	TYPE: SILVER PLASTIC
LOCATION:	LOCATION: ON REAR OF SLIDER BOX + 3/16" ALUMINUM ON TOP OF SLIDER FLAP BENT TOWARD TIRE
WINCHES: 12 - EA. EXTREME ZINC - D/S	
WINCH CLIPS: 12 - EA. SLIDING CLIPS - P/S	
STRAPS: NONE	

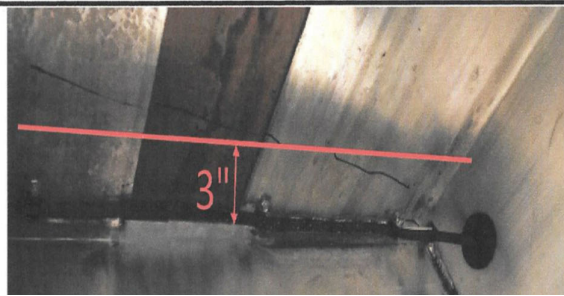
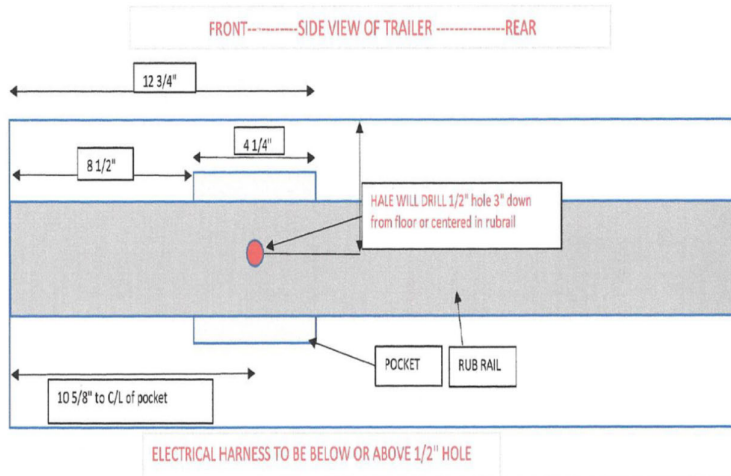
REMARKS: PRICE SUBJECT TO CHANGE 12 WEEKS PRIOR TO ESTIMATED BUILD DATE

WEIGHT: +/-3%: 10690

- EXTRA 7 WAY WIRED TO JUNCTION BOX D/S INSIDE FRAME IN FRONT OF AXLE #1.
- 2 POSITION REAR AXLE SLIDER - SLIDER BOX INSIDE MAIN FRAME RAILS. SLIDER BOX AND REAR HANGERS TO BE BLACK SOFTCOAT - GALVANIZED HANGERS ON FRONT AXLE ONLY.
- TRUCKLITE REGISTRATION HOLDER D/S @ LANDING GEAR
- WIRING BACK 3" FROM INSIDE NOSE
- OLD STYLE PLUMBING WITH A POLYCARBONATE BOX

DISCLAIMER

Specifications are believed to be correct, but may contain errors and/or omissions. Photographs are the representative of the subject equipment but may not be identical. Equipment availability, prices and specifications are subject to change without notice.



ITEM: 0610-4810210-2

OUT SIDE VIEW

INSIDE VIEW

97.375 IN SIDE LEG TO IN SIDE LEG

NOTES:

- DO NOT SCALE DRAWING.
- CONFORM TO DRAWING AND SHIP SPEC.
- QUALITY STANDARDS AND PRACTICES MUST BE APPLIED IN FABRICATION OF PARTS.
- ALL TO BE MADE FROM SURFACE INSPECTIONS OTHER THAN SURFACE FINISH REQUIREMENTS.
- CRITICAL DIMENSIONS USE INDICATED \pm .
- THIS DRAWING WAS GENERATED BY AERO INC. THE EXCLUSIVE PROPERTY OF AERO INCORPORATED, ANDER AUSTON, 1115 RIVER VALLEY AVENUE, ORLANDO, FLORIDA 32837. THIS INFORMATION IS PROVIDED TO MAKE THIS CONSTRUCTION TO/FURNISH THIS INFORMATION TO OTHER PARTIES.

13.18

48.10

4.15

10.5

7	0611-90125	LEG ASSY BULKHEAD ALUM P.S	1
6	0611-90126	LEG ASSY BULKHEAD ALUM D.S	1
5	0611-90123	CLUBSET BULKHEAD END	4
4	TOP RAIL ASSY 102W		1
3	BOTTOM RAIL ASSY 102W		1
2	90125		1

REV	DESCRIPTION	BY	DATE
REVISIONS			

P:\INVENTOR 2012\0610\0610-4810210-2.dwg

Aero

BULKHEAD ALUM 48"x102"
10" WRAP

REV: 1 DRAWN BY: MJB CHECKED BY: DATE:

ITEM: 0610-4810210-2 REV: A