

# HALE TRAILER BRAKE & WHEEL



**A021991-A021994**  
**VIN: 24141-24144**

SALES | RENTALS | PARTS | SERVICE

<b>Allentown, PA:</b>	800-383-8894	<b>Jacksonville, FL:</b>	800-828-3055
<b>Baltimore, MD:</b>	888-601-7500	<b>Little Rock, AR:</b>	833-424-8944
<b>Boston, MA:</b>	800-854-5310	<b>Portland, ME:</b>	800-325-4253
<b>Concord, NC:</b>	800-438-2250	<b>Richmond, VA:</b>	866-839-3495
<b>Delmar, DE:</b>	866-486-1400	<b>Scranton, PA:</b>	800-569-1400
<b>Des Moines, IA:</b>	888-673-5011	<b>Springfield, MA:</b>	800-854-5306
<b>Elkton, MD:</b>	800-544-7127	<b>Voorhees, NJ:</b>	866-315-0235

HaleTrailer.com | @haletrailer

**800-232-6535** \*FINANCING AVAILABLE

## XL SPECIALIZED TRAILERS

### XL 80 Mechanical Full-width Gooseneck: Knight

OVERALL LENGTH 48'  
OVERALL WIDTH 102"  
CAPACITY 80,000 LB DISTRIBUTED; 70,000 LB IN 16'  
WEIGHT +/- 3% 15,732 LB

#### GOOSENECK

NECK STYLE FULL-WIDTH NECK  
LENGTH 10'  
KINGPIN SETTING 16"  
SWING CLEARANCE 84"  
5TH WHEEL HEIGHT 49"  
DECKING 1 1/8" APITONG DECKING, FLUSH  
D-RINGS (2) BENT D-RINGS PER SIDE  
(1) PAN STYLE IN EACH CORNER  
MUDFLAPS ALUMINUM MUDFLAPS  
TOOL BOX TOOL BOX ON BASE OF NECK WITH ALUMINUM LOCKABLE LID - RACK AND WORK LIGHT  
(1) PAIR PULLOUT LIGHTS +\$942  
3 HEIGHT SETTING FRONT CONNECTOR PLATE  
REGISTRATION HOLDER  
(1) ADDITIONAL PAIR OF MICRONOVA CLEARANCE LIGHTS

#### MAIN DECK

LENGTH 29'  
LOADED DECK HEIGHT 18" W/ 6" GROUND CLEARANCE  
DECKING 1 1/8" APITONG DECKING, FLUSH - CENTER DECK COVERED  
STORAGE COMPARTMENTS AT FRONT OF MAIN DECK  
CROSSMEMBERS 6" & 4" JR I-BEAM ON 12" ALTERNATING CENTERS  
BEAMS (4) 12" FAB I-BEAMS  
D-RINGS (8) BENT D-RINGS PER SIDE  
OUTRIGGERS REMOVABLE SWINGOUT OUTRIGGERS ON 24" CENTERS  
CHAIN DROPS 24" CENTERS - OUTSIDE BEAMS  
RAMPS TAPERS TO 4"  
(4) ADDITIONAL PAIR OF MICRONOVA CLEARANCE LIGHTS

#### REAR DECK

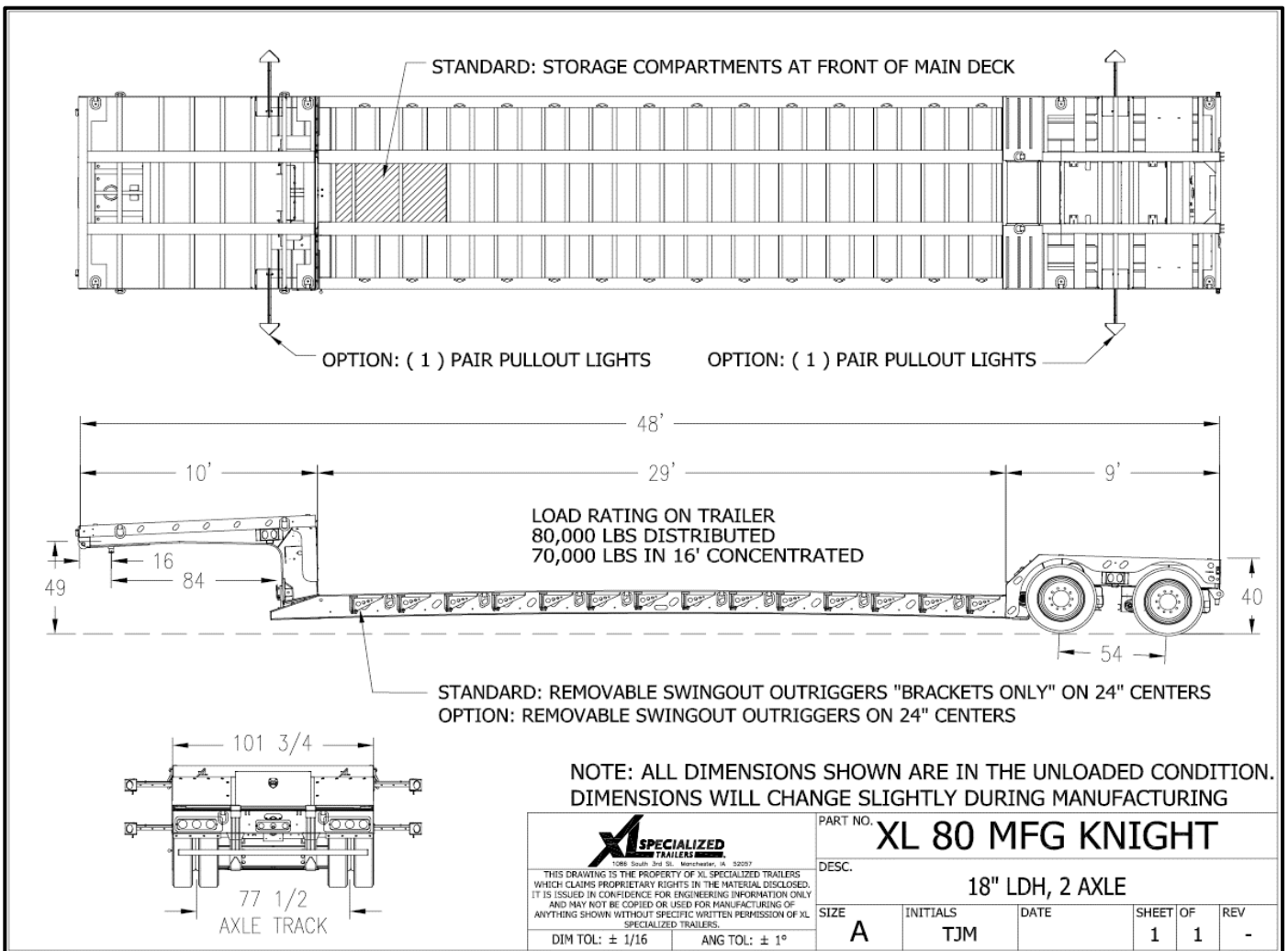
LENGTH 9'  
LOADED DECK HEIGHT 40"  
AXLES (2) 25,000 LBS. NOMINAL (5/8" WALL)  
SUSPENSION HENDRICKSON / 25,000 CAPACITY/ AIR RIDE  
AXLE SPACING 54"  
ABS 4S2M WITH SPRING BRAKES ON (2) AXLES  
TIRES 255 / 70R / 22.5 ( H )  
WHEELS INSIDE STEEL DISC  
WHEELS OUTSIDE ALUMINUM POLISHED DISC  
BRAKES 16 1/2" X 7"  
DRUMS OUTBOARD

- ELECTRICAL** 12V SEALED GROTE SYSTEM WITH ( 3 ) TAILLIGHT ALUMINUM PACKAGE  
4" AMBER STROBE TO BE USED AS 3RD TAILLIGHT  
( 1 ) ADDITIONAL PAIR OF MICRONOVA CLEARANCE LIGHTS
- DECKING** 1 1/8" APITONG DECKING, FLUSH  
2' X 2' CUT OUT IN TRANSITION AREA
- D-RINGS** ( 1 ) PAN STYLE D-RING IN EACH CORNER  
( 1 ) PAIR FLAT D-RINGS ON REAR TRANSITION  
( 2 ) BENT D-RINGS IN TAIL CHANNEL
- REAR CONNECTION** PREP FOR FLIP AXLE

**PAINT** BLACK

**AIR SYSTEM** MANUAL RIDE HEIGHT CONTROL  
COLAS+ RAISE AND LOWER VALVE  
LIQUID FILLED AIR GAUGE

**ADDITIONAL** ( 2 ) PAIR EZ MOUNT FLAG HOLDERS  
RUBBER GLAD HAND COVERS  
ALL CLEARANCE LIGHTS TO BE MICRONOVA



**DISCLAIMER**

Specifications are believed to be correct, but may contain errors and/or omissions. Photographs are the representative of the subject equipment but may not be identical.  
Equipment availability, prices and specifications are subject to change without notice.