

HALE

TRAILER

BRAKE & WHEEL



A029898-A029906

TEMP VIN: S028803-S028811

SALES | RENTALS | PARTS | SERVICE

Allentown, PA: 800-383-8894

Little Rock, AR: 833-424-8944

Baltimore, MD: 888-601-7500

Portland, ME: 800-325-4253

Concord, NC: 800-438-2250

Raleigh, NC: 833-418-9777

Delmar, DE: 866-486-1400

Scranton, PA: 800-569-1400

Des Moines, IA: 888-673-5011

Springfield, MA: 800-854-5306

Elkton, MD: 800-544-7127

Voorhees, NJ: 866-315-0235

Jacksonville, FL: 800-828-3055

Walpole, MA: 800-854-5310

haletrailer.com | @haletrailer

800-232-6535

*FINANCING AVAILABLE

Velocity Drop Deck 48' Wide Spread Air (Model Code: HAVSD12WSA)

Overall Length: 48 feet x 102 inches

Suspension Type: Wide spread air

Deck Lengths: 10 feet front and 38 feet rear

Frame Rating: 80,000 lbs distributed - GAWR and tire ratings determine legal payloads

Rear Deck Height: 40 inches - loaded

Flooring: 1 1/8 inch wood

Crossmembers: 18 inch centers front deck / 12 inch centers rear deck - 4 inch jr. I-steel

Side Rails: 6 inch structural channel @ 6.5 lbs/ft

Stake Pockets: 3/16 inch steel on 24 inch centers

Pipe Spoils: Double between stake pockets

Rubrail: 3/8 inch x 2 1/2 inch steel

Main Beams: 130K load bearing flanges

Kingpin: 18 inches

Loaded Fifth Wheel Height: 49 inches

Landing Gear: OEM standard

Knee Braces: Fabricated on approx. 60 inch C/C

Bulkheads: Removable aluminum bulkhead - no turnback - 48 inches high

Bulkhead Pockets: 4 - F-5 DOT-type steel

Number of Axles: 2

Axle Spindle: Tapered

Brakes: Spring brakes, auto slacks

Air Line Filters: (2) Meritor In-line type installed

ABS: Meritor Wabco iABS 4S/2M - no cable or tool

Axle Spread: 122 inches - set at rear

Hub and Drums: 10-hole hub-piloted with outboard cast drums

Wheel Ends: Grease in hubs - *** 5-year wheel end warranty ***

Wheels: 22.5 x 8.25 steel disc wheels - pre-painted white - STANDARD

Tires: 255/70R 22.5 16PR OEM standard

Tire Inflation System: None standard

Suspension Detail: AANL23K Intraax air ride

Auto Glad Hand Dump : Installed

Electric Dump Valve: Wired to 7-way auxiliary socket to dump rear axle

Air Lift: None Standard

Front Corners: Tapered

Electrical System: LED: 3 lights/side, 3 lights/side on rear - STANDARD

Paint: Black urethane with Velocity decals - STANDARD

Conspicuity Tape: Per NHTSA specs - installed on rubrails

Bumper: Weld-on type - meets underride requirements

Mudflaps: 2 sets OEM standard; Spring loaded brackets behind front axle

Winch Track: Steel on road side: 8-foot front deck and full length on rear deck where possible

Sliding Winches: 12 ZINC : 2 front deck and 10 rear deck

27 foot Winch Straps: None standard

30 foot Winch Straps: None standard

Dock Bumpers: 1 pair rubber on rear

Spare Tire Carrier: 1 standard - mounted between lower gooseneck beams

Hubodometer: None standard

Registration Holder: Install registration holder - OEM standard

Tool Box: None standard

VIN Plate: Bilingual US/Canadian VIN plate

Unit Numbers & Decals: Not installed

DISCLAIMER

Specifications are believed to be correct, but may contain errors and/or omissions. Photographs are the representative of the subject equipment but may not be identical.

Equipment availability, prices and specifications are subject to change without notice.

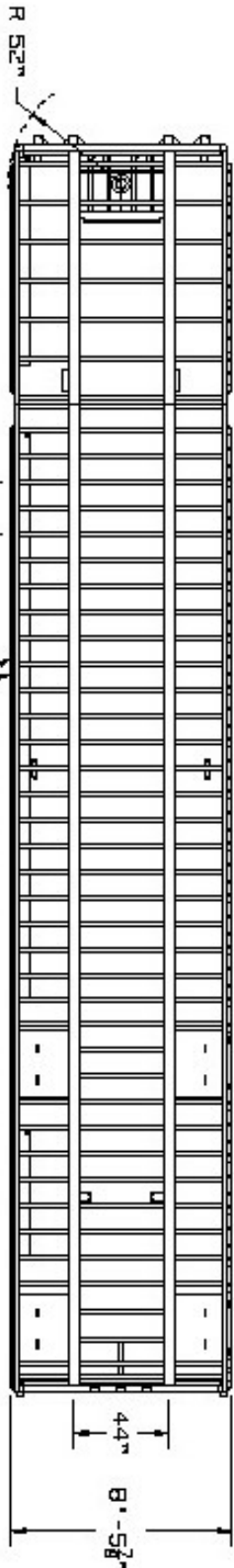
THIS DOCUMENT REMAINS PROPERTY OF FONTAINE TRAILER COMPANY. ITS CONTENTS ARE CONFIDENTIAL AND PROPRIETARY. DO NOT REPRODUCE, USE OR DISCLOSE ANY INFORMATION WITHOUT WRITTEN CONSENT FROM FONTAINE TRAILER COMPANY.

FRAME RATINGS

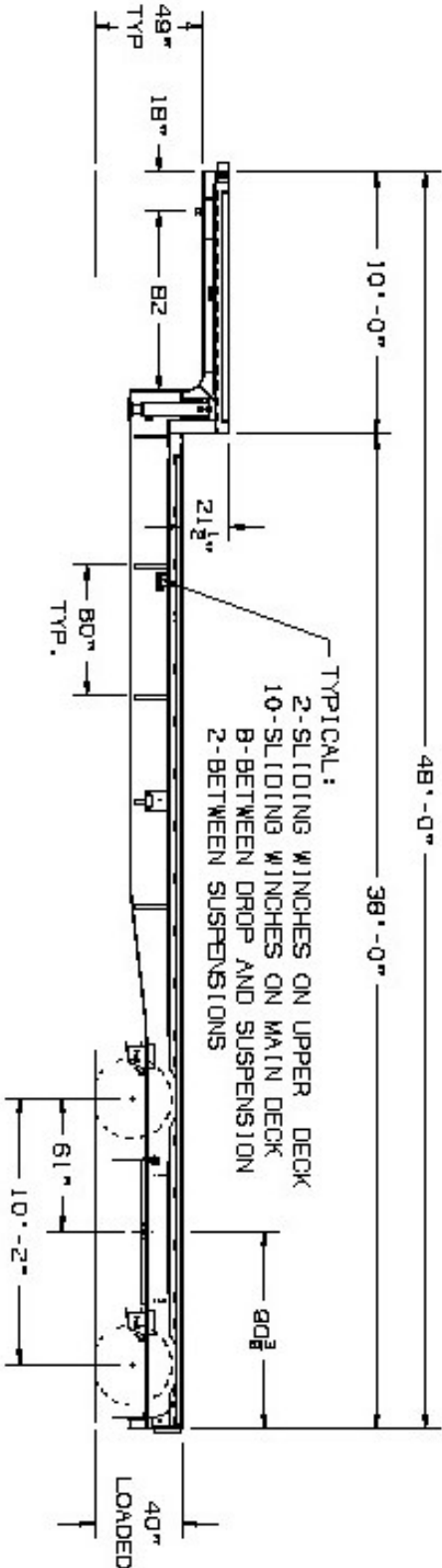
DISTRIBUTED	80,000
COIL	51,487
60"	54,868
120"	59,014
180"	63,702

NOTE:
FRAME RATINGS DENOTE WHAT THE TRAILER FRAME IS CAPABLE OF SUPPORTING. THE SUSPENSION/TIRES MAY NOT BE CAPABLE OF SUPPORTING THESE LOADS WHEN CONCENTRATED OVER THE SUSPENSION AREA. REFER TO THE TRAILER GWR AND GAWR.

FLOOR SILLS



STAKE POCKETS — 24\"/>



TYPICAL:
2-SLIDING WINCHES ON UPPER DECK
10-SLIDING WINCHES ON MAIN DECK
8-BETWEEN DROP AND SUSPENSION
2-BETWEEN SUSPENSIONS

KING PIN HEIGHT RANGE

47"
48"
48" (TYPICAL)
50"

DO NOT SCALE DIMENSIONS DIMENSIONS ARE IN INCHES DATE 11/4/04-1004		TOLERANCES UNLESS OTHERWISE SPECIFIED FRACTIONS: ± 1/16 DECIMALS: ± .005 ANGLES: ± 2° UNITS OF DIMENSION ARE IN INCHES		DESIGNED BY	DATE	APPROVED BY	DATE
FONTAINE TRAILER CO. HALEYVILLE, AL		TITLE: HAVSD12WSA		PRINTED ON CERTIFIED PAPER IS UNREPRODUCIBLE WITHOUT WRITTEN PERMISSION			
DRIVING NUMBER 18358-SALES		REV. A 1 OF 1					