



Hale Trailer Brake & Wheel

500132-500134



Detailed Specifications

MAGNITUDE 55MX (Model: MAG55HMXTXT829543)

General	
SKU	MAG55HMXTXT829543
Capacity	55 Tons in 16-foot (Closed Position) Length with 4 Axles Close Coupled Or Single Axle Stinger; GAWR and Tire Ratings Determine Legal Payloads
Length (Trailer Only)	55 feet 4 inches
Width	8 feet 6 inches
Compatibility	Designed to Accept Optional 51/60 Rear Axle, EQ1 Spreader, and/or 23 inch Flip Box
Weight	Est. Configured Weight: 27110# +/- 3%
Gooseneck	
Gooseneck Design	Narrow Hydraulic Removable Non-Ground Bearing - Swing Radius of 102 inches (11ft 11in overall Gooseneck Length) Set Up for Wetline Operation
Loaded Fifth Wheel Height	50 inch Nominal Loaded Fifth Wheel Height With 5 Ride Height Positions
Kingpin	Removable Kingpin at 102 inch Radius
Power Source	Set Up for Wet Line Operation
VIN Plate	Bilingual VIN Plate
Registration/Document Holder	Install Registration/Document Holder
Deck	
Framework	All Main Longitudinal Members Fabricated with 100,000# Minimum Yield Steel Flanges with 50,000# Webs
Deck Design	Flat Level Telescopic Deck Design
Deck Length	29 feet 4 inches Clear Deck Length (Closed); 50 feet 4 inches (Open)
Loaded Deck Height	20 inches with 6 inches Ground Clearance
Crossmembers	Crossmember Spacing Outboard Mainbeams 12 in c/c (Nominal)
Flooring	2 inch Nominal Wood
Front Ramps	None, Front of Deck Sloped Top Down to Assist in Loading with Traction Cleats
Extension Brackets	14 pair - 28 Total Removable Swing Type, 2 Pair - 4 Total Heavy Duty Removable Hook-On Type
Toolbox	2 Fully Covered Trays in Front of Deck Between Mainbeams with Lockable Covers
Rear Bridge: General	
Front Bogie Ramp	Included
Boom Trough	V Crossmembers with Bolt-In V Pan
Deck to Bogie Connection	Modular
Bolsters	Recessed Load Bearing Between All Axles and Rear of Last Axle
Covered Rear Bogie	None
Rear Bogie Height	40 7/8 inches to Top Flanges - 36 5/8 inches to Top of Bolsters
Connections for Future Axle Attachment	Air and Electrical Connections to Go Along with Connecting Ears
Accent Package	None
Rear Bridge: Axles	
Number of Axles	3 Axles
Axle Capacity	25,000 lb. Nominal Capacity Per Axle NOTE: GAWR Determined by Suspension Type, Brakes, Tires and Other Components.
Axle Spread	54.5 inches (Between Axles)
Brakes	16.5 inches x 7 inches with 5.5 inches Autoslacks - Heavy Duty Brake Drums - Outboard Mount
Spring Brakes	None
Dust Shield	None
Hubodometer	None
Rear Bridge: Suspension	
Suspension	Air Ride
ABS	None
Third Lift Axle	Air Lift Installed on Third Axle
Chain Lift	Chain Lift On First Axle
Ride Height Control	5-Position Mechanical Ride Height Control System
Manual Dump Valve	Manual Dump Valve (Push Pull)
Liquid Filled Gauge	None
Load Scale	None
Wheels and Tires	
Wheels	8.25 x 22.5 Steel Disc - Hub-Piloted
Tires	275/70R 22.5 H Ply OEM Standard
Inflation	None



Detailed Specifications

Lighting

Electrical System	DOT Sealed Beam and Harness with LED Lights and 4-inch Flush Mounted Battery Powered Amber Strobes
Tail Lights	3 Tail Light Package
Marker Lights	3 Marker Lights Per Side Including Mid-Turn
Electrical Receptacle	J560 7-Pin Connector

Paint

Paint	Fontaine Black Polyurethane Enamel
-------	------------------------------------

Miscellaneous

Lash Rings	12 Pair - 24 Total
Flag Holders	2 Pair Flag Holders

Additional Options

Flip Box	None
Accent Package Installed on Flip Box	None
Spreader	None
Accent Package Installed on Rigid Spreader	None
Flip Axle	None
Dust Shields on Flip Axle	None
Accent Package Installed on Flip Axle	None

Terms

Please Note	Price Includes Commodity Surcharges
Commercial Terms	Ex Works- Springville, AL, USA

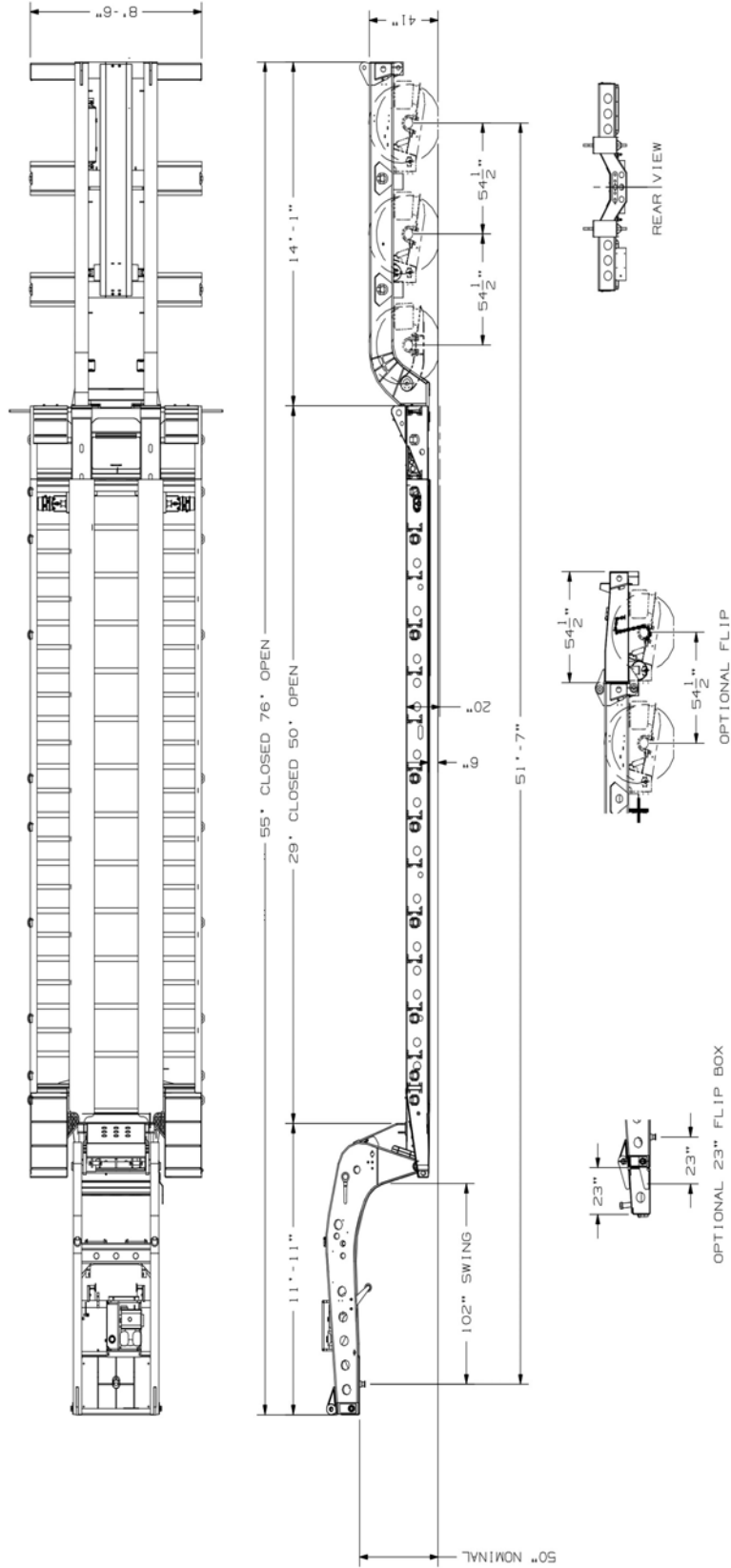
MAGNITUDE 55MX



[MAGNITUDE 55MX Base Model](#) (Note: Options not shown)

DISCLAIMER

Specifications are believed to be correct, but may contain errors and/or omissions. Photographs are the representative of the subject equipment but may not be identical. Equipment availability, prices and specifications are subject to change without notice.



THIS DRAWING AND THE SPECIFICATIONS ARE THE PROPERTY OF FONTAINE HEAVY-HAUL. IT IS TO BE USED ONLY FOR THE PROJECT AND LOADS SPECIFICALLY INDICATED THEREON. IT IS NOT TO BE REPRODUCED, COPIED, OR TRANSMITTED IN ANY FORM OR BY ANY MEANS, ELECTRONIC OR MECHANICAL, INCLUDING PHOTOCOPYING, RECORDING, OR BY ANY INFORMATION STORAGE AND RETRIEVAL SYSTEM. ANY UNAUTHORIZED USE OF THIS DRAWING OR SPECIFICATIONS IS PROHIBITED. FONTAINE HEAVY-HAUL, SPRINGVILLE, AL