



# Hale Trailer Brake & Wheel

## A000009-A000011

### X-L SPECIALIZED TRAILERS, INC

OAL: 53' 6"  
OAW: 102"

MODEL: XL 60HDGSMÁ DIST: 60,000# CONC. 35,000# IN 16'

WEIGHT +/-3%

#### GOOSENECK-

LENGTH: 12' SCRAPER NECK  
KING PIN SETTING: 16"  
SWING CLEARANCE: 98"  
5TH WHEEL HEIGHT: 49" W/ 5 VARIABLE RIDE HEIGHT POSITIONS  
HYDRAULICS: 13HP HONDA POWER UNIT WITH STEEL COVER - DUAL HYDRAULICS

#### MAIN DECK-

3 BEAM DESIGN - 2 3/8" CHAMBER (PLUS OR MINUS 3/4")  
LENGTH: 32' WITH 31' 6" OF CLEAR DECK  
LOADED DECK HGT: 12" W 4" GROUND CLEARANCE  
DECKING: STEEL DECKING BETWEEN MAIN BEAMS WITH DURABAK  
1 1/8" APITONG DECKING, FLUSH BETWEEN MAIN BEAMS AND OUTER BEAMS  
CROSSMEMBER: 4" JR. I-BEAM ON 18" CENTERS  
SIDE BEAMS: FAB I-BEAMS 8"  
D-RINGS: 12 BENT D-RINGS PER SIDE- 24 TOTAL  
RAMPS: TAPERS TO 4"  
OUTRIGGERS: NONE

#### REAR DECK:

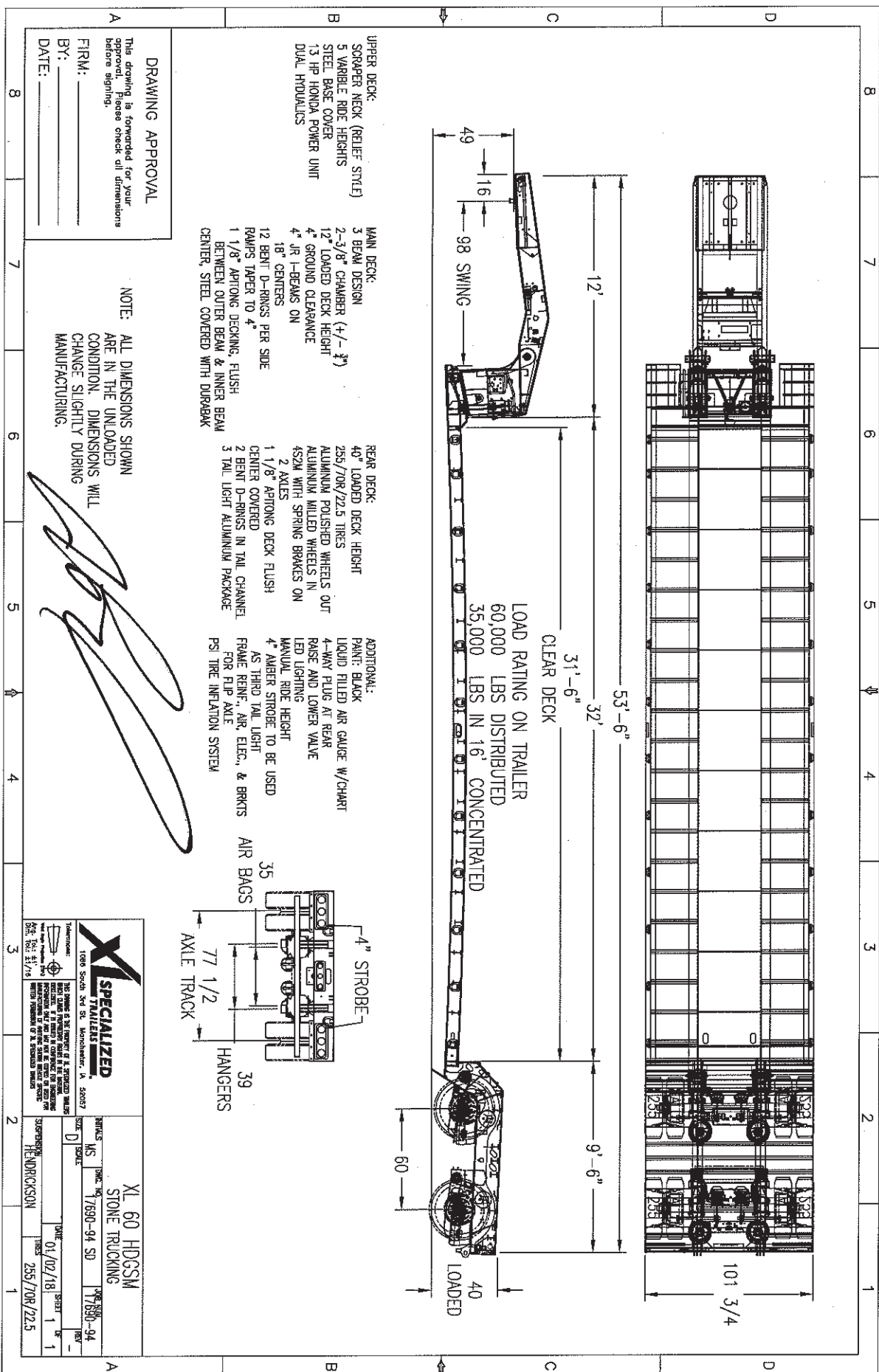
LENGTH: 9' 6"  
LOADED DECK HEIGHT: 40"  
AXLES: ( 2 ) 25,000 NOMINAL, 77 1/2" TRACKING  
SUSPENSION: HEND-TURNER / 25,000 AIR  
AXLE SPACING: 60"  
ABS: 4S2M WITH SPRING BRAKES ON 2 AXLES  
TIRES: 255 / 70R / 22.5  
WHEELS: 8.25 X 22.5 ALUMINUM MILLED INSIDE, ALUMINUM POLISHED OUTSIDE DISC WHEELS  
BRAKES: 16 1/2" X 7"  
DRUMS: HUB PILOT / OUTBOARD DRUMS  
ELECTRICAL: 12V SEALED GROTE SYSTEM WITH 3 TAIL LIGHT ALUMINUM PACKAGE  
4" AMBER STROBE WITH SWITCH TO MAKE 3 STT  
DECKING: 1 1/8" APITONG DECKING, FLUSH  
D-RINGS: 2 BENT D-RINGS IN TAIL CHANNEL

#### ADDITIONAL:

PSI TIRE INFLATION SYSTEM  
PAINT: BLACK URETHANE WITH 2 PART EPOXY PRIMER  
LIQUID FILLED AIR GAUGE WITH CHART  
4-WAY PLUG AT REAR  
MANUAL RIDE HEIGHT CONTROL  
LED LIGHTING  
FRAME REINFORCEMENT, AIR, ELECTRIC AND BRACKETS FOR FLIP AXLE  
RAISE AND LOWER VALVE

#### DISCLAIMER

Specifications are believed to be correct, but may contain errors and/or omissions. Photographs are the representative of the subject equipment but may not be identical. Equipment availability, prices and specifications are subject to change without notice.

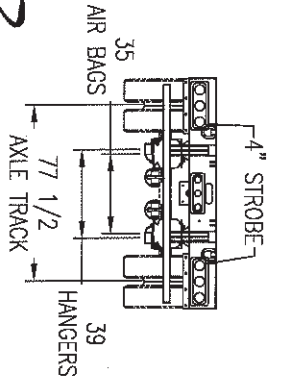


UPPER DECK:  
 SCRAPPER NECK (RELIEF STYLE)  
 5 VARIABLE RIDE HEIGHTS  
 STEEL BASE COVER  
 13 HP HONDA POWER UNIT  
 DUAL HYDRAULICS

MAIN DECK:  
 3 BEAM DESIGN  
 2-3/8" CHAMBER (+/- 3")  
 12" LOADED DECK HEIGHT  
 4" GROUND CLEARANCE  
 4" JR I-BEAMS ON 18" CENTERS  
 12 BENT D-RINGS PER SIDE  
 RAMP TAPER TO 4"  
 1 1/8" APTONG DECKING, FLUSH BETWEEN OUTER BEAM & INNER BEAM  
 CENTER, STEEL COVERED WITH DURABAK

REAR DECK:  
 40" LOADED DECK HEIGHT  
 255/70R/22.5 TIRES  
 ALUMINUM POLISHED WHEELS OUT  
 ALUMINUM MILLED WHEELS IN  
 452M WITH SPRING BRAKES ON 2 AXLES  
 1 1/8" APTONG DECK FLUSH CENTER COVERED  
 2 BENT D-RINGS IN TAIL CHANNEL  
 3 TAIL LIGHT ALUMINUM PACKAGE

ADDITIONAL:  
 PAINT: BLACK  
 LIQUID FILLED AIR GAUGE W/CHART  
 4-WAY PLUG AT REAR  
 RAISE AND LOWER VALVE  
 LED LIGHTING  
 MANUAL RIDE HEIGHT  
 4" AMBER STROBE TO BE USED AS THIRD TAIL LIGHT  
 FRAME REINFC. AIR, ELEC., & BRKTS FOR FLIP AXLE  
 PS TIRE INFLATION SYSTEM



**DRAWING APPROVAL**  
 This drawing is forwarded for your approval. Please check all dimensions before signing.  
 FIRM: \_\_\_\_\_  
 BY: \_\_\_\_\_  
 DATE: \_\_\_\_\_

**NOTE:** ALL DIMENSIONS SHOWN ARE IN THE UNLOADED CONDITION. DIMENSIONS WILL CHANGE SLIGHTLY DURING MANUFACTURING.

*[Handwritten Signature]*

**SPECIALIZED TRAILERS**  
 1000 South 3rd St. Lynchburg, VA 23907  
 THE NAME IS THE SIGNATURE OF A SPECIALIZED TRAILER. THE NAME IS THE SIGNATURE OF A SPECIALIZED TRAILER. THE NAME IS THE SIGNATURE OF A SPECIALIZED TRAILER. THE NAME IS THE SIGNATURE OF A SPECIALIZED TRAILER.

**XL 60 HDGSM**  
**STONE TRUCKING**  
 Dwg No: 7690-94 SD  
 DATE: 01/02/88  
 SHEET 1 OF 1  
 DESIGNED BY: HENDRICKSON  
 DATE: 255/70R/22.5