



Hale Trailer Brake & Wheel 010110



**HYDRAULIC REMOVABLE TRAILER (Model: KSHRG-3-45T-DSR)
45-Ton Capacity DSR Drop Side Rail 3 Axle - Lite**

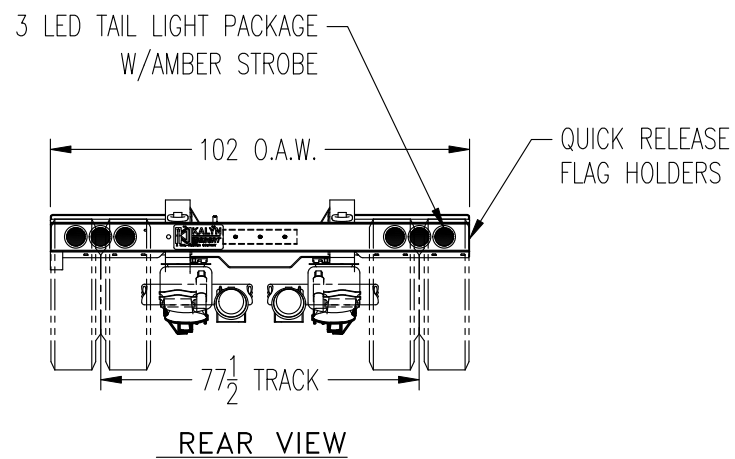
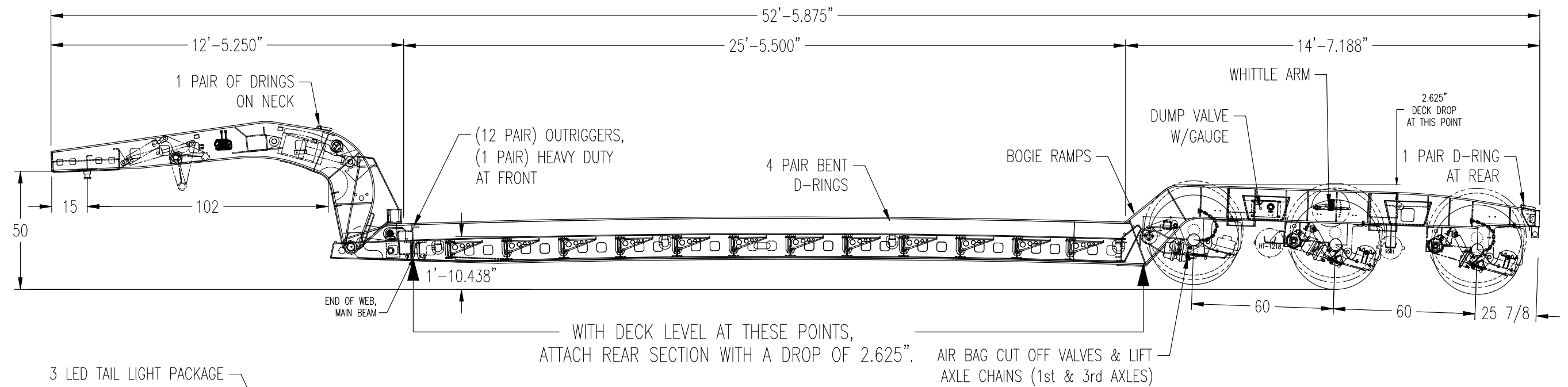
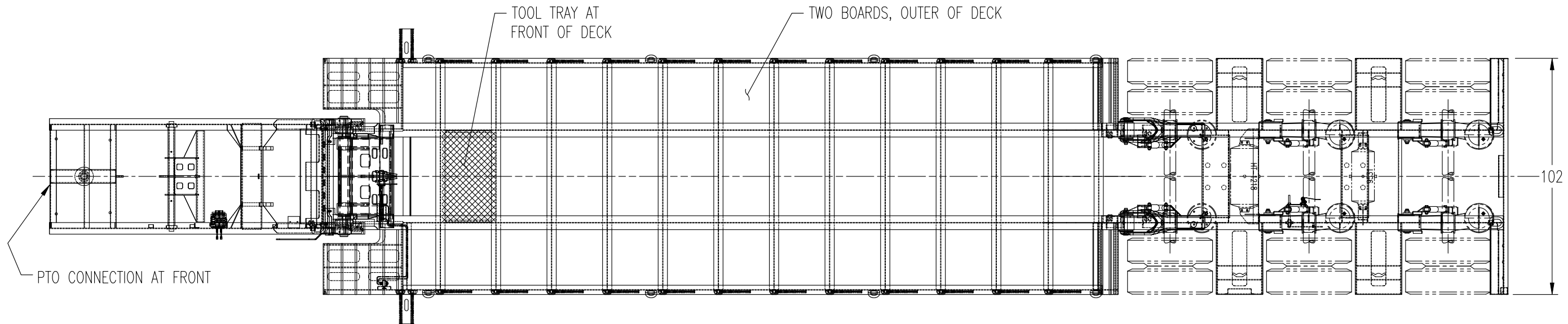
FEATURE	DESCRIPTION
Capacity	90,000 lbs. concentrated in 16'. 100,000 lbs. distributed throughout deck. GAWR & tire rating determine legal loads
Overall nominal dimensions	8'- 6" wide X 52'- 6" length. Gooseneck 12'- 5", main deck 25'- 6", and rear deck 14'- 6"
Gooseneck	Adjustable 5 position ride height
Swing clearance	102"
Upper coupler	50" king pin height, 2" pin, and 15" setting
Hydraulics	PTO powered (standard) 15 GPM / 2,800 PSI. Two 8" X 12" main cylinders and one 4" X 10" lift arm cylinder
Load space, nominal	25'- 6" for main deck
Main deck height, loaded	16" at rated capacity. 5" ground clearance
Beams	Four beam design - 130,000 psi yield flanges and 100,000 psi yield web
Cross members	Fabricated I-Beams on 24" centers with lightening holes; 3 recessed cross members in rear of deck area
Floor	Two boards- outside only-1 3/4" Apitong,with bridge clips and carriage bolts on every other cross member (center open)
Outriggers	12 pair removable swing type (brackets raised to top flange), 1 pair heavy duty-double, removable hook-on type @ front of deck
D-rings	6 pair total, 4 pair (bent) on side-rail, 1 pair on gooseneck and 1 pair rear of deck
Flag Holders	Quick disconnect style front and rear
Tool tray	Expanded metal tool tray at front of lower deck, approximately 24" long
Front Ramps	None (standard) tapered approach with approximately 7" drop to ground

FEATURE	DESCRIPTION
Bogie Ramp	Bridge to rear deck half ramp
Boom trough	Open boom trough at rear
Wheel covers	Open wheel area (standard)
Bogie Outriggers (rear bolsters)	Lite weight design
Rear Bumper	Lite weight design
Suspension	Ridewell 240 Air Ride, 60" spread, w/ air bag cut off valves and axle chains (Axle #1 and #3)
Lift axle	None (standard) (see above)
Air Controls	Automatic / Manual ride height system with manual adjustable arm and manual dump valve
Axles	Three axles, OEM, 5" round with 5/8" wall, tapered spindles, 25,000 lb. nominal capacity
Hubs	10 stud, hub piloted, long studs, steel hub
Drums	Cast
Seals	Oil
Brakes	16½" X 7" Air (parking brakes 1st and 2nd axles)
ABS	None (standard)
Slack adjusters	Automatic slack adjusters
Wheels	All Aluminum , 8.25 X 22.5
Tires	OEM 275/70R22.5, 16PR (Low Profile) radial tires
Mud-flaps	Black anti-spray with Kalyn Siebert logo
Finishing (paint & trim)	Shot blasted prior to paint. Epoxy primer and Black polyurethane paint. Air, electrical and hydraulic lines installed after painting is completed
Lights & electrical	LED-Sealed beam with mid turn signal, 12 volt. 7-way plug. Third tail as strobe light with toggle switch
Conspicuity Tape	Discontinuous on sides
Manual	One operator manual per order will be provided. Parts manual available as option
Warranty	5 year pro-rated frame warranty. 3 year prorated paint warranty. 1 year warranty on remainder of trailer
Weight	17,400 lbs. ± 3% tolerance. For trailers other than standard specification, weight and dimensional drawing will be provided by plant after order is received and accepted.

DISCLAIMER

Specifications are believed to be correct, but may contain errors and/or omissions. Photographs are the representative of the subject equipment but may not be identical. Equipment availability, prices and specifications are subject to change without notice.

REV.	ECO#	DESCRIPTION	DWN	CHKD	DATE
B	#43629	UPDATE DECK	AG		9/25/19



NO.	DESCRIPTION	DWG. NO.
4	REAR SECTION ASSY	R4818
3	DECK ASSY	DD6406
2	INNER NECK ASSY	G3781
1	OUTER NECK ASSY	G3779

TOLERANCES
UNLESS OTHERWISE SPECIFIED:
DIMENSIONS ARE IN INCHES
DECIMALS ANGULAR
XX ± .06 ± 1°
XXX ± .030

THIRD ANGLE PROJECTION

KALYN SIEBERT LP CLAIMS PROPRIETARY RIGHTS IN THE INFORMATION DISCLOSED HEREON. IT IS AGREED THAT ANY AND ALL SPECIFICATIONS, DATA AND DESIGN CONCEPTS SHOWN SHALL REMAIN CONFIDENTIAL WITH THE SPECIFIC UNDERSTANDING THAT NEITHER THIS DRAWING NOR ANY REPRODUCTION THEREOF WILL BE DISCLOSED TO OTHERS OR USED FOR THE PURPOSE OF MANUFACTURE OR PROCUREMENT OF THE ARTICLE OR PART SHOWN HEREON WITHOUT PRIOR WRITTEN CONSENT OF KALYN SIEBERT LP.

KALYN SIEBERT
GATESVILLE, TEXAS

KSHRG-3-45T
DROP SIDE RAIL

DRAWN GEE	DATE 8/15/19	DWG. NO. 644246	RELEASE DATE	SHEET 1 OF 1
CHECKED GEE	DATE 8/15/19	SUSPENSION RIDEWELL 240	TIRES 275/70/22.5	
ENGINEER GEE	DATE 8/15/19	SCALE NTS	DO NOT SCALE DRAWING	W.O. NUMBER N/A