



Hale Trailer Brake & Wheel 500135



Detailed Specifications

MAGNITUDE 55H MBMD 26 (Model: MAG55H*MB*26543)**

General	
SKU	MAG55H***MB*26543
Capacity	55 Tons in 12-foot Length with 4 Axles Close Coupled Or Single Axle Stinger; GAWR and Tire Ratings Determine Legal Payloads
Length (Trailer Only)	52 feet 0 inches
Width	N/A
Compatibility	Designed to Accept Optional 51/60 Rear Axle, Spreader, and/or 23 inch Flip Box
Weight	Est. Configured Weight: 21719# +/- 3%
Gooseneck	
Gooseneck Design	Narrow Hydraulic Removable Non-Ground Bearing - Swing Radius of 102 inches (11ft 11in overall Gooseneck Length) Set Up for Wetline Operation
Loaded Fifth Wheel Height	50 inch Nominal Loaded Fifth Wheel Height With 5 Ride Height Positions
Kingpin	Dual Kingpin at 81 inch and 102 inch Radius
Power Source	Set Up for Wet Line Operation
VIN Plate	Bilingual VIN Plate
Registration/Document Holder	Install Registration/Document Holder
Deck	
Framework	All Main Longitudinal Members Fabricated with 100,000# Minimum Yield Steel Flanges with 50,000# Webs
Deck Design	Beam (MBMD) Design
Deck Length	26 feet 0 inches Clear Deck Length
Loaded Deck Height	22 inches with 6 inches Ground Clearance
Crossmembers	On 24 inch Centers (Nominal)
Front Ramps	None, Front of Deck Sloped Top Down to Assist in Loading with Traction Cleats
Extension Brackets	12 pair - 24 Total Removable Swing Type, 2 Pair - 4 Total Heavy Duty Removable Hook-On Type
Toolbox	2 Fully Covered Trays in Front of Deck Between Mainbeams with Lockable Covers
Hammer Plate	None
Rear Bridge: General	
Front Bogie Ramp	Included
Boom Trough	V Crossmembers with Bolt-In V Pan
Deck to Bogie Connection	Modular
Bolsters	Recessed
Covered Rear Bogie	None
Rear Bogie Height	40 7/8 inches to Top Flanges - 36 5/8 inches to Top of Bolsters
Connections for Future Axle Attachment	Air and Electrical Connections to Go Along with Connecting Ears
Accent Package	None
Rear Bridge: Axles	
Number of Axles	3 Axles
Axle Capacity	25,000 lb. Nominal Capacity Per Axle NOTE: GAWR Determined by Suspension Type, Brakes, Tires and Other Components.
Axle Spread	54.5 inches (Between Axles)
Brakes	16.5 inches x 7 inches with 5.5 inches Autoslacks - Heavy Duty Brake Drums - Outboard Mount
Spring Brakes	None
Dust Shield	None
Hubodometer	None
Rear Bridge: Suspension	
Suspension	
ABS	None
Third Lift Axle	Air Lift Installed on Third Axle
Chain Lift	None
Ride Height Control	5-Position Mechanical Ride Height Control System
Manual Dump Valve	Manual Dump Valve (Push Pull)
Liquid Filled Gauge	None
Load Scale	None
Wheels and Tires	
Wheels	8.25 x 22.5 Steel Disc - Hub-Piloted
Tires	275/70R 22.5 H Ply OEM Standard
Inflation	None

Detailed Specifications

Lighting

Electrical System	DOT Sealed Beam and Harness with LED Lights and 4-inch Flush Mounted Battery Powered Amber Strobes
Tail Lights	3 Tail Light Package
Marker Lights	3 Marker Lights Per Side Including Mid-Turn
Electrical Receptacle	J560 7-Pin Connector

Paint

Paint	Fontaine Black Polyurethane Enamel
-------	------------------------------------

Miscellaneous

Lash Rings	14 Pair - 28 Total
Flag Holders	2 Pair Flag Holders

Additional Options

Flip Box	None
Accent Package Installed on Flip Box	None
Spreader	None
Accent Package Installed on Rigid Spreader	None
Flip Axle	None
Dust Shields on Flip Axle	None
Accent Package Installed on Flip Axle	None
Deck Insert	None

Terms

Please Note	Price Includes Commodity Surcharges
Commercial Terms	Ex Works- Springville, AL, USA

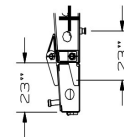
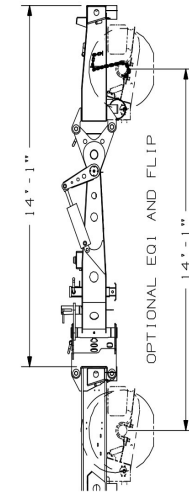
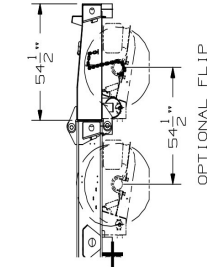
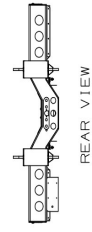
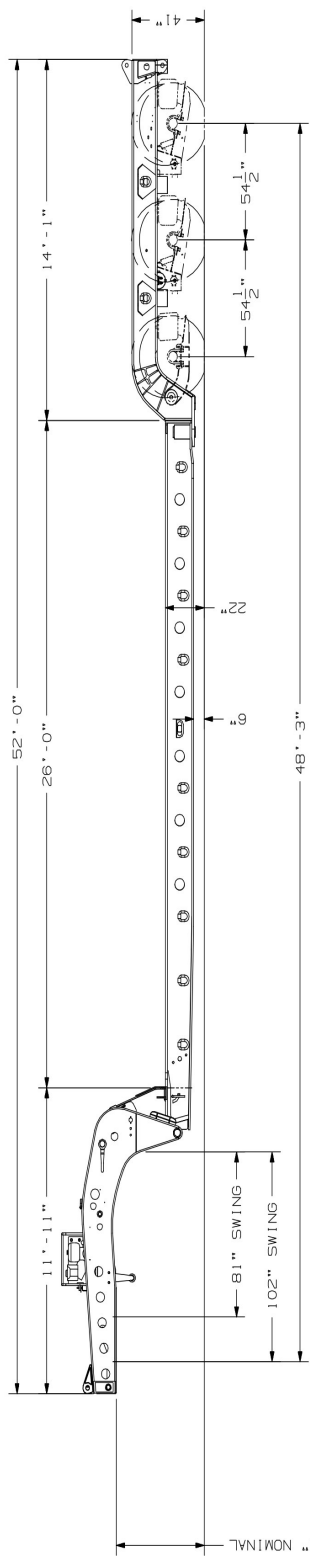
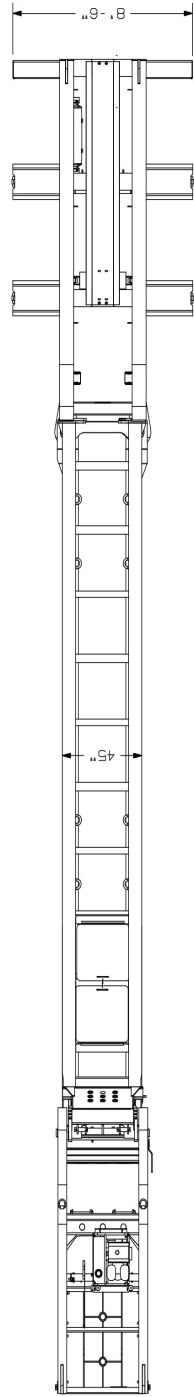
MAGNITUDE 55H MBMD 26



[MAGNITUDE 55H MBMD 26 Base Model](#) (Note: Options not shown)

DISCLAIMER

Specifications are believed to be correct, but may contain errors and/or omissions. Photographs are the representative of the subject equipment but may not be identical. Equipment availability, prices and specifications are subject to change without notice.



THIS DRAWING AND THE INFORMATION CONTAINED HEREIN ARE THE PROPERTY OF FONTAINE HEAVY-HAUL, INC. AND ARE TO BE USED FOR THE EXCLUSIVE USE OF THE USER. FONTAINE HEAVY-HAUL, INC. SHALL NOT BE RESPONSIBLE FOR ANY DAMAGE TO THE USER OR OTHER THIRD PARTY ARISING FROM THE USE OF THIS DRAWING OR THE INFORMATION CONTAINED HEREIN. THE USER SHALL BE RESPONSIBLE FOR OBTAINING ALL NECESSARY PERMITS AND APPROVALS FROM THE APPROPRIATE AUTHORITIES. FONTAINE HEAVY-HAUL, INC. IS NOT RESPONSIBLE FOR ANY DAMAGE TO THE USER OR OTHER THIRD PARTY ARISING FROM THE USE OF THIS DRAWING OR THE INFORMATION CONTAINED HEREIN. THE USER SHALL BE RESPONSIBLE FOR OBTAINING ALL NECESSARY PERMITS AND APPROVALS FROM THE APPROPRIATE AUTHORITIES.

FONTAINE HEAVY-HAUL
SPRINGVILLE, AL