

HALE

TRAILER

BRAKE & WHEEL

GENESIS FRAME DUMP



A023730
VIN: 89245

SALES | RENTALS | PARTS | SERVICE

Allentown, PA: 800-383-8894 Little Rock, AR: 833-424-8944
Baltimore, MD: 888-601-7500 Portland, ME: 800-325-4253
Concord, NC: 800-438-2250 Raleigh, NC: 833-418-9777
Delmar, DE: 866-486-1400 Scranton, PA: 800-569-1400
Des Moines, IA: 888-673-5011 Springfield, MA: 800-854-5306
Elkton, MD: 800-544-7127 Voorhees, NJ: 866-315-0235
Jacksonville, FL: 800-828-3055 Walpole, MA: 800-854-5310

haletrailer.com | @haletrailer

800-232-6535 *FINANCING AVAILABLE

Length	36' (2)	BODY SPECIFICATIONS		Body	
Width	96" INBOARD	Tarp	NONE	Accessories	
Side Height	64" SOLID	Bow Holders	NONE		
Top Rail	9" DUMP	Tarp Bows	NONE		
Side Mat'l-front	7' - 100 WALL	Tarp Basket	NONE		
-middle	23' - 140 WALL	Tarp Hooks	NONE		
-rear	6' - 180 WALL	Bulkhead Mat'l	3/16"	TAILGATE	
Side Options	NONE	Bulkhead	D/S-MANDOOK	Height	FULL - GENESIS
Floor Mat'l	1/4" FULL LENGTH	Options	5" SLOPE PLATES	Mat'l Thkness	.140 WALL
		Body Fenders	14"	Slope	NONE
Crsmbr Spacing	12"	Ladders (Out)	D/S-REAR	Hinges	OVERSLUNG
				Side Swing	YES -W / GRD CNTRL-P/S HINGE
Floor Options	STUB LONGITUDINALS			Gateseal	RUBBER
		Inside	NONE		
		Shovel Hgr	INSIDE TRAILER- P/S OF	Safety Latch	ONE EACH SIDE
Tailgate Control	AIR / FRAME + ELEC CC (4)		DOGHOUSE	Coal/Grain Door	NONE
Body Pkg	DOUBLE REAR HINGE SHOE	Light Panel	FULL - LED-EVENLY SPACED	Coal Chute	NONE
Options			0000X000X0000 (18)		
Vibrator	NONE	Marker Lights	LED - 40 PR BOTTOM ONLY(21)	Gate Options	REMARK (9)
Mudflaps	STD + ACROSS REAR (1)	MMTS	BELOW RAIL - LED		
		Apron	NONE		

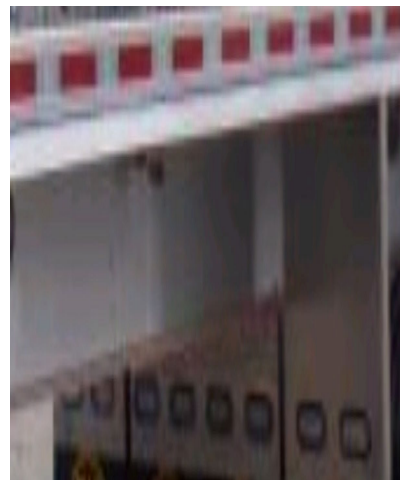
CHASSIS SPECIFICATIONS

Model	TRIAxLE-1 FIXED-FRONT 2 LIFT	ABS	2S/1M	Tire Carrier	NONE
Beam Mat'l	ALUMINUM			Landing Gear	2 SPEED JOST AX150
Length	36' 6"				D/S CRANK
Width	96"	Independ. Susp(s)		Chassis Lights	YES (20)
Hoist	85-285 (2)(12)				
Chassis Neck	STD + 12	Distance:		Elec Coupler	7 WAY + 6 WAY LABELED
King Pin Setting	18"	From:		'AUXILIARY'	
5th Whl Plate	3/8" W/ 3/8"X 3" X 7" MOUNT			Hyd Tank	NONE
5th Whl Ht	49"	Controls		Hyd Hose Fitting	WINGNUT
Overhang	6"			Hyd Hose Length	108"
Rear Axle Setting	21.5"	Location		Tow Hooks	TWO-ONE EACH SIDE
K/P To Rear Axle	398.5"	Axle(s)		Paint	ORANGE - MACK DUPONT
Suspension	AAT30K / E3-L(LIFT0-E2-1 (3)(5)				ORANGE P9052 EA. (16)
Susp Control	FRAME + ELEC CC (4)(10)	Accessories			ORANGE TAPE (16)
Susp Spacing	52" - 52" (6)			Chassis	CHASSIS REAR CM: TAPERED
Susp Options	GALVANIZED HANGERS	Brakes		Options:	W/ DIAMOND PLATE COVER
Springs	AIR	Drums			
Axles	TP SPINDLES	Hubs			REMARK (13)(14)
Accessories	NONE				
Brakes	HENDRICKSON MAXX 22T	Wheels			
Drums	N/A				
Hubs	10 STUD STEEL - PILOT	Tires			
	W/ HXL-5; GREASED HUBS				DOUBLE REAR HINGE SHOES
Wheels	8.25 x 24.5 6 HP/ 6 MP				
Tires	11R 24.5 HSR2 16 PLY CONT.(11)				

REMARKS: PRICE SUBJECT TO CHANGE 12 WEEKS PRIOR TO ESTIMATED BUILD DATE.

WEIGHT: 14,597

1. **40" ALUM FLAPS W/ 3" LIP & BLK RUBBER BTMS AHEAD OF AXLE #1 & TWO TRUCKLITE 6051A CLEAR LENSE OVAL AMBER LIGHTS ON BTM**
2. NO EAST LOGOS-DECALS, WELD ON, RIVETTED ON - NONE ANYWHERE ON THE TRAILER.
3. RIGHT WEIGH OIL FILLED GAUGE (LBS.)(FLUSH MOUNT) ON FRONT CHASSIS CROSSMEMBER.
4. WIRED TO AUXILIARY 6 WAY PLUG -**FRONT LIFT WIRED TO BLACK AND 2ND LIFT WIRED TO YELLOW.**
5. HEIGHT CONTROL VALVE ON AXLE #3.
6. LIFT AXLES (SEPARATE) TO BE CONTROLLED THRU FRAME SWITCHES & ELEC CC (WIRED TO AUX. PLUG) & TO HAVE BRAKE RELEASE (LIFT AXLE TO SPIN FREELY).
7. **ALL FRAME SWITCHES TO BE POLY BOX -NOT AIR IN THE BOX** **CHANGE 1, 2**
8. PLASTIC INSULATORS BETWEEN WHEEL/DRUM & WHEEL/HUB ALL AXLES.
9. REMOTE GREASE ZERKS FOR LATCH BAR
10. **DELETED NOTE**
11. TIREMAXX PRO INFLATION SYSTEM ON ALL THREE AXLES
12. **DELETED NOTE**
13. HINGE SHOE GREASE ZERKS-REMOTE ZERKS TO D/S MANIFOLD
14. REAR PIN BUSHING LUBE-REMOTE GREASE ZERKS
15. NO CAST STEP OR ANY STEP OF ANY KIND BELOW MANDOOR
16. **ALL PAINTABLE PARTS ON THE TRAILER TO BE THE CUSTOM ORANGE ABOVE AND THE ORANGE TAPE ALSO. 2 STRIPES IN TOP RAIL**
17. MOUNT ONE LED BOXED IN WORKLIGHT IN EACH CORNER OF FRONT INSIDE OF TRAILER. EACH BOX HAS TWO LED CLEAR LIGHTS - ONE LED LIGHT SHINING OUTWARD AND ONE SHINING DOWN. REFERENCE PICS - WIRED TO MARKERS W/ TOGGLE SWITCH IN CONTROL BOX.
- 18.**LIGHT PANEL TO BE WIRED TO MATCH THIS LAYOUT(TURN,TURN,TURN,BRAKE,BRAKE,ID,ID,ID,BRAKE,BRAKE,TURN,TURN,TURN) PLACE 1 PAIR OF B/U LIGHTS (TRUX TLED -4100W) IN "BRAKE" LOCATION NEXT TO THE ID LIGHTS AS A PLACE HOLDER AND GIVE THE CUSTOMER THE 2 EXTRA RED LIGHTS LOOSE. THE CUSTOMER CAN REPLACE THE B/U LIGHTS WITH THE RED LIGHTS**
19. CENTER ALUM CHASSIS FLAP AHEAD OF AXLE #1 (FLUSH W/ OUTER FLAPS) & BLK RUBBER BTMS & 4 TRUCKLITE 6051A CLEAR LENS AMBER LIGHTS IN BOTTOM OF FLAP- ALUM FLAP LIGHTS ALL TO BE EVENLY SPACED AND FLUSH
20. TWO CLEAR LENS TRUX TLED-4X40 LIGHTS WIRED AS STOP, MARKER, BACK UP , **DIAMOND PLATE**
21. MARKER LIGHTS **ARE CLEAR LENSE** AND EVERY PANEL BOTTOM ONLY



DISCLAIMER

Specifications are believed to be correct, but may contain errors and/or omissions. Photographs are the representative of the subject equipment but may not be identical.
Equipment availability, prices and specifications are subject to change without notice.