

HALE

TRAILER

BRAKE & WHEEL



Resale Inventory

A024068

VIN: P2238

SALES | RENTALS | PARTS | SERVICE

Allentown, PA:	800-383-8894	Little Rock, AR:	833-424-8944
Baltimore, MD:	888-601-7500	Portland, ME:	800-325-4253
Concord, NC:	800-438-2250	Raleigh, NC:	833-418-9777
Delmar, DE:	866-486-1400	Scranton, PA:	800-569-1400
Des Moines, IA:	888-673-5011	Springfield, MA:	800-854-5306
Elkton, MD:	800-544-7127	Voorhees, NJ:	866-315-0235
Jacksonville, FL:	800-828-3055	Walpole, MA:	800-854-5310

haletrailer.com | @haletrailer



800-232-6535 *FINANCING AVAILABLE

Jeep 302 (Model: JEEP302)

Detailed Specifications		General	
SKU	MAGJEP302****502		
Capacity	30 Tons GAWR and GVWR Determine Legal Loads		
Length (Jeep Only)	15 feet 9 inches		
Width	8 Feet 0 Inches		
Compatibility	Magnitude 55H or Magnitude 55L Plus with 23 inch Flip Box		
Weight	Est. Configured Weight: 5804# +/- 3%		
Gooseneck			
Gooseneck Design	Fixed Narrow Swing Radius 72 Inches		
Loaded Fifth Wheel Height	48 Inches		
VIN Plate	Bilingual VIN Plate		
Registration/Document Holder	Install Registration/Document Holder		
Fifth Wheel Type	Fixed Fifth Wheel		
Deck			
Deck Design	Beam Design		
Rear Bridge: Axles			
Number of Axles	2		
Axle Capacity	25,000 lb. Nominal Capacity Per Axle NOTE: GAWR Determined by Suspension Type, Brakes, Tires and Other Components		
Axle Spread	50 Inches (Between Axles)		
Brakes	16.5 Inches x 7 Inches with 5.5 Inches Autoslacks - Heavy Duty Brake Drums - Outboard Mount		
Dust Shield	None		
Rear Bridge: Suspension			
Suspension	Single Point Spring		
Wheels and Tires			
Wheels	8.25 x 22.5 LxL One Buffed Outside/Steel Inside - Hub-Piloted		
Tires	275/70R OEM Standard		
Lighting			
Electrical System	DOT Sealed Beams and Harness		
Tail Lights	2 Tail Lights		
Electrical Receptacle	J560 7-Pin Connector		
Paint			
Paint	Fontaine Black Polyurethane Enamel		

DISCLAIMER

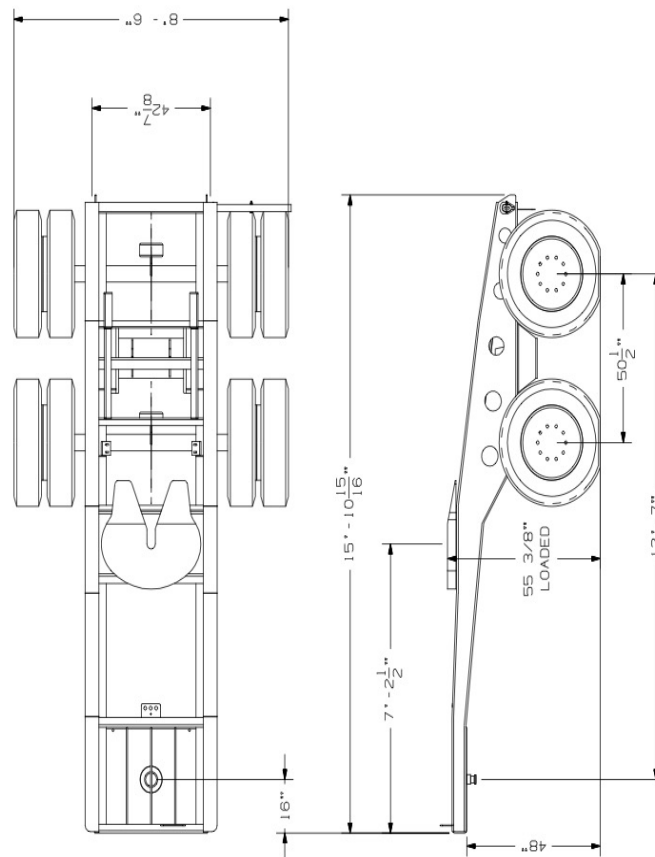
Specifications are for the equipment at the time it was produced and may not accurately reflect its current condition. Photographs are the representative of the subject equipment but may not be identical. Equipment availability, prices and specifications are subject to change without notice.

Detailed Specifications

Jeep 302



[Jeep 302 Base Model](#) (Note: Options not shown)



 FONTAINE HEAVY-HAUL SPRINGVILLE, AL	
MODEL: 1	302J
DRAWING NUMBER	6403

THIS DRAWING IS THE PROPERTY OF FONTAINE HEAVY-HAUL, INC. IT IS TO BE USED FOR THE DESIGN AND CONSTRUCTION OF THE UNIT ONLY. IT IS NOT TO BE REPRODUCED OR TRANSMITTED IN ANY FORM OR BY ANY MEANS, ELECTRONIC OR MECHANICAL, INCLUDING PHOTOCOPYING, RECORDING, OR BY ANY INFORMATION STORAGE AND RETRIEVAL SYSTEM. ANY REPRODUCTION OR TRANSMISSION OF THIS DRAWING WITHOUT THE WRITTEN PERMISSION OF FONTAINE HEAVY-HAUL, INC. IS PROHIBITED.