

HALE

TRAILER

BRAKE & WHEEL

EAST GENESIS UNLOADER

CLOSED TOP



A028492
VIN: 91089

SALES | RENTALS | PARTS | SERVICE

Allentown, PA: 800-383-8894

Little Rock, AR: 833-424-8944

Baltimore, MD: 888-601-7500

Portland, ME: 800-325-4253

Concord, NC: 800-438-2250

Raleigh, NC: 833-418-9777

Delmar, DE: 866-486-1400

Scranton, PA: 800-569-1400

Des Moines, IA: 888-673-5011

Springfield, MA: 800-854-5306

Elkton, MD: 800-544-7127

Voorhees, NJ: 866-315-0235

Jacksonville, FL: 800-828-3055

Walpole, MA: 800-854-5310

haletrailer.com | @haletrailer



800-232-6535 *FINANCING AVAILABLE

BODY: "GENESIS"		TAILGATE:		CHASSIS:	
WIDTH (INCHES)	102	HEIGHT	FULL (6)	MODEL	TANDEM
LENGTH (FEET)	53	TYPE	TT-SPLIT	TYPE	ALUM SUB FRAME
HEIGHT (INCHES)	100	STYLE	GENESIS	AXLE TO AXLE	52" (8)
SIDE MAT'L (OUTBOARD)	"GENESIS" (7)	MAT'L THICKNESS	0.150	REAR AXLE SETTING	84"
FRONT	0.150	S / S HINGE ON	PASS. SIDE 4-3-4	5TH WHEEL HT	49"
MIDDLE	0.150	GATESEAL	YES	PIN SETTING	36" + 3/8" KP PLATE
REAR	0.150	GATE LADDER	NONE	SUSPENSION	AAT30K/2-1
POLISHED SIDES	YES+TG+REAR PKT	TARP HOOKS	NONE	SPRINGS	AIR
ROOF	YES-FULL LID	WINDERS	2-ONE EA. SIDE	AXLES	TP HXL-5
ROOF MAT'L	0.1	GATE GUIDE	YES	BRAKES	16-1/2" x 7"
BULKHEAD	1/4" (1)(4) BUFFED	GATE CONTROL	MECH - BOLT CLAW	DUSTSHIELDS	YES
TARP HOOKS	NONE (11)	POCKETS	EXTRUDED	BRAKE CHAMBERS	TOP
TARP BASKET	NONE	CROSSPIPE (S)	NONE	ABS	2S / 1M
TARP	NONE	COMPACTOR:		HUBS	10 S STEEL
CATWALK	NONE	SIDE LATCH	YES (4)	DRUMS	CAST
B.H. LADDER	NONE	CENTER LATCH	N/A	WHEELS	8.25 X 24.5 8 HP
CROSSMEMBER	"I"BEAM- 12" C/L	PIN DIA.	N/A	TIRES	11R 24.5 R268
FLOOR MAKE	KEITH - 3.5" DRIVES	HYDRAULICS:		DOLLIES	2 SPD JOST HX150
FLOOR MAT'L	#2299 - 1/2" IMPACT	HOSES	TWO-4000 PSI	LOCATION	D/S CRANK (3)
WEARPADS	CWS (9)	LENGTH	108"	BUMPER	STEEL
TAPE COLOR	NONE	FITTINGS	PUSH-PULL	TOW HOOK(S)	TWO
LIGHT PANEL	LED IN TAILGATE (5)	HP	1" MALE	PUSH BLOCKS	YES
MARKER LIGHTS	LED (2)	LP	1" FEMALE	PAINT	BLACK
MIDMOUNT SIGNALS	LED - MODEL 60	HOSE LOCATION	DRIVER SIDE		
MUDFLAPS	STD	AIR & ELECTRICAL	DRIVER SIDE		
HOSE HANGER	YES				
TIRE CARRIER	NONE				

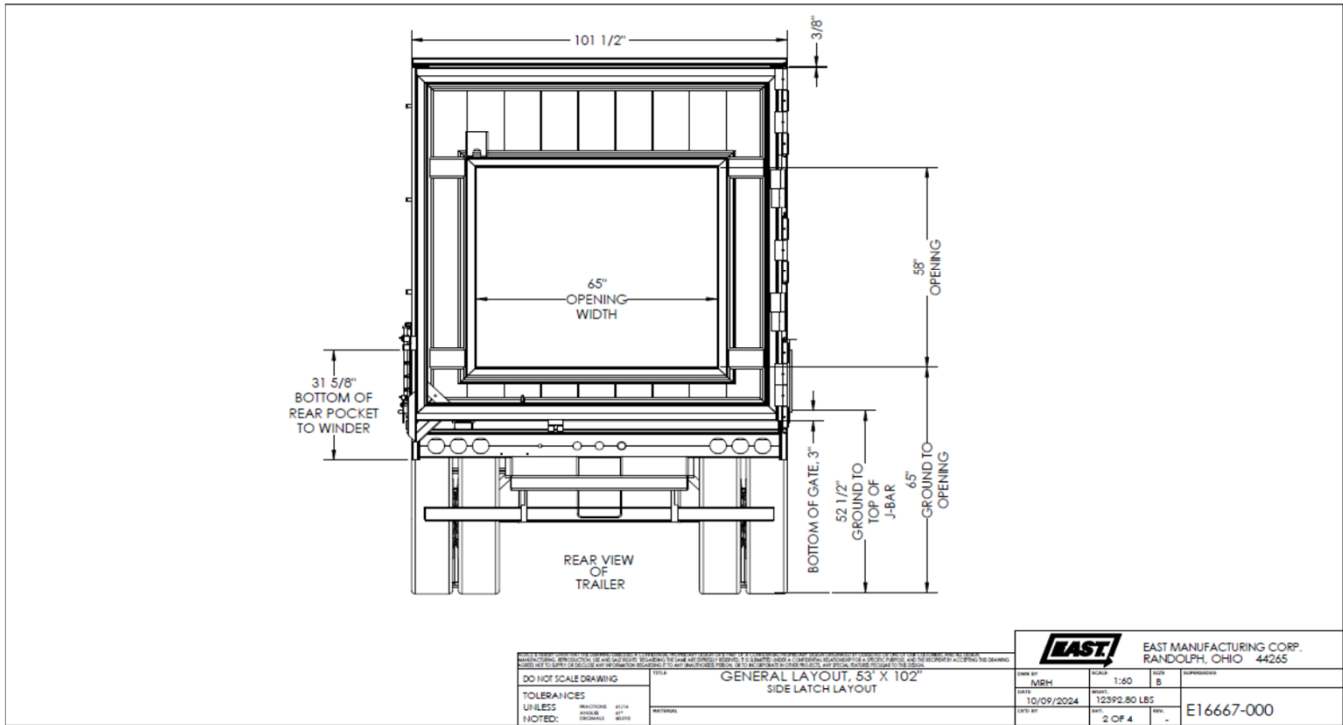
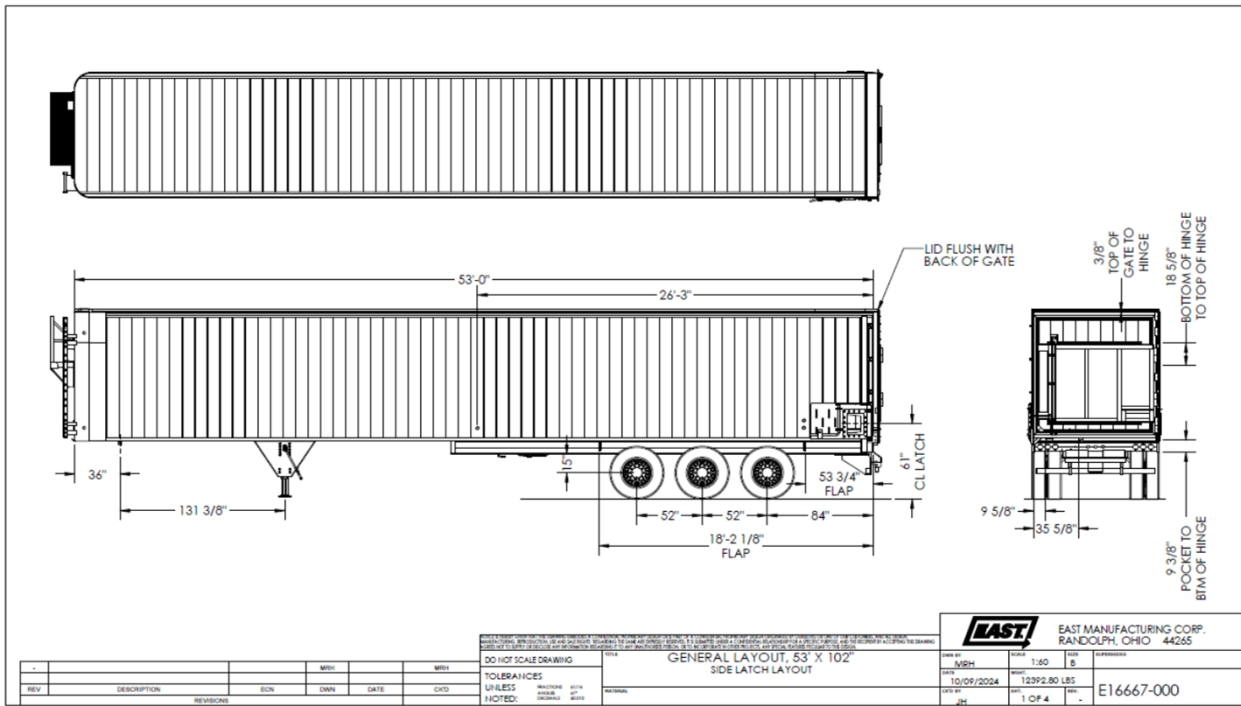
REMARKS: PRICING SUBJECT TO CHANGE 12 WEEKS PRIOR ESTIMATED BUILD DATE.

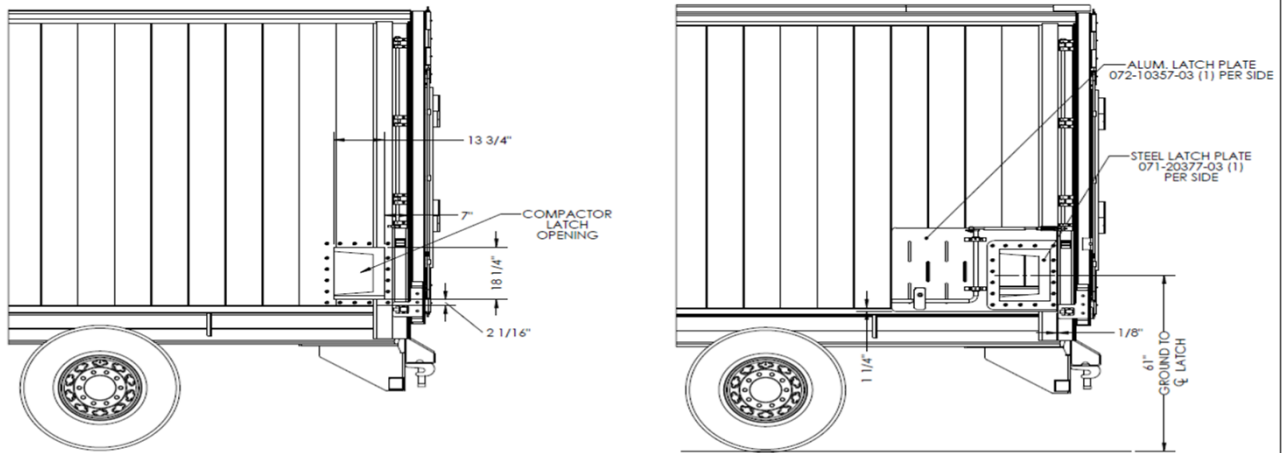
- NO INSIDE BULKHEAD STEPS.
- 3 PAIR PER SIDE SIDE BOTTOM ONLY WITH PROTECTORS, GROMMETS IN LOCATIONS WHERE WIRE PASSES THROUGH METAL.
- ADD TRUCKLITE REGISTRATION HOLDER TO D/S LANDING GEAR BRACKET.
- SIDE LATCH & GATE DIMENSIONS EXACTLY AS 89259
- LIGHT PANEL (OOO ooo OOO)
- GATE WEDGE
- 3/16" X 68" X 68" 'BOOMERANG' STYLE LINER EACH SIDE AT REAR
- GALVANIZED HANGERS
- 24" WEAR SLATS @ REAR OF FLOOR
- C/L OF REAR AXLE IS 43' FROM THE KINGPIN
- REINFORCED BULKHEAD

OVERALL HEIGHT (FT) **12.92** EMPTY WEIGHT (#) **21,567** CUBIC YARDS **132**
(EMPTY WEIGHT VARIANCE +/- 3%)

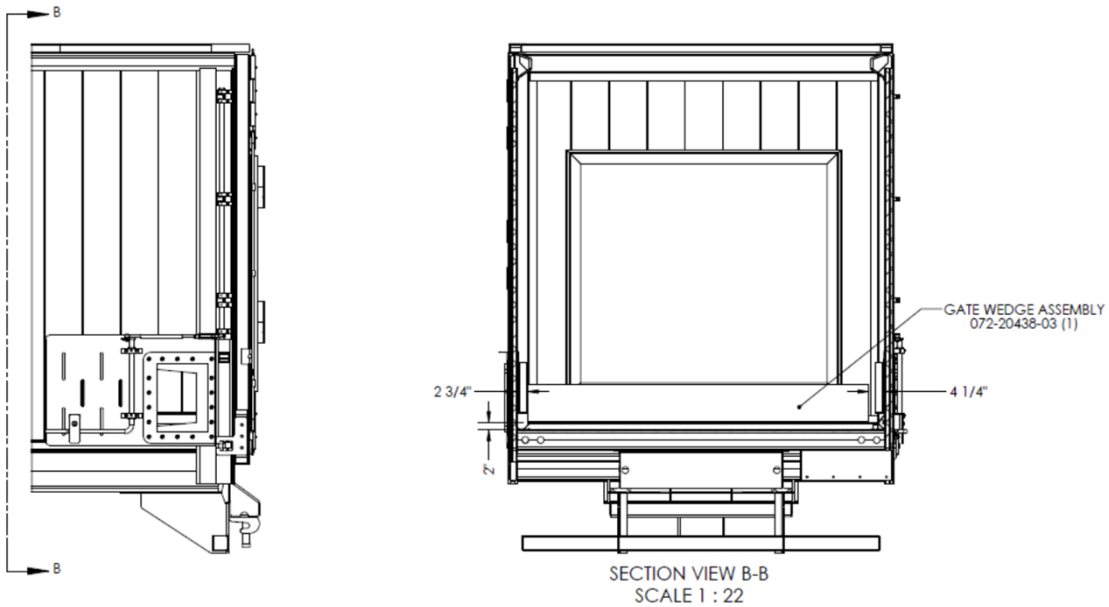
DISCLAIMER

Specifications are believed to be correct, but may contain errors and/or omissions. Photographs are the representative of the subject equipment but may not be identical.
Equipment availability, prices and specifications are subject to change without notice.





DO NOT SCALE DRAWING				GENERAL LAYOUT, 53' X 102'				EAST MANUFACTURING CORP. RANDOLPH, OHIO 44265			
TOLERANCES UNLESS NOTED:	FINISHES UNLESS NOTED:	WELDING SYMBOLS UNLESS NOTED:	WELDING SYMBOLS UNLESS NOTED:	WELDING SYMBOLS UNLESS NOTED:	WELDING SYMBOLS UNLESS NOTED:	WELDING SYMBOLS UNLESS NOTED:	WELDING SYMBOLS UNLESS NOTED:	WELDING SYMBOLS UNLESS NOTED:	WELDING SYMBOLS UNLESS NOTED:	WELDING SYMBOLS UNLESS NOTED:	WELDING SYMBOLS UNLESS NOTED:
GENERAL LAYOUT, 53' X 102'				SIDE LATCH LAYOUT				E16667-000			
10/09/2024				12392.80 LBS				3 OF 4			



DO NOT SCALE DRAWING				GENERAL LAYOUT, 53' X 102'				EAST MANUFACTURING CORP. RANDOLPH, OHIO 44265			
TOLERANCES UNLESS NOTED:	FINISHES UNLESS NOTED:	WELDING SYMBOLS UNLESS NOTED:	WELDING SYMBOLS UNLESS NOTED:	TOLERANCES UNLESS NOTED:	FINISHES UNLESS NOTED:	WELDING SYMBOLS UNLESS NOTED:	WELDING SYMBOLS UNLESS NOTED:	TOLERANCES UNLESS NOTED:	FINISHES UNLESS NOTED:	WELDING SYMBOLS UNLESS NOTED:	WELDING SYMBOLS UNLESS NOTED:
GENERAL LAYOUT, 53' X 102'				SIDE LATCH LAYOUT				E16667-000			
10/09/2024				12392.80 LBS				4 OF 4			