

HALE

TRAILER

BRAKE & WHEEL



A029466
VIN: 80039

SALES | RENTALS | PARTS | SERVICE

Allentown, PA:	800-383-8894	Little Rock, AR:	833-424-8944
Baltimore, MD:	888-601-7500	Portland, ME:	800-325-4253
Concord, NC:	800-438-2250	Raleigh, NC:	833-418-9777
Delmar, DE:	866-486-1400	Scranton, PA:	800-569-1400
Des Moines, IA:	888-673-5011	Springfield, MA:	800-854-5306
Elkton, MD:	800-544-7127	Voorhees, NJ:	866-315-0235
Jacksonville, FL:	800-828-3055	Walpole, MA:	800-854-5310

haletrailer.com | @haletrailer



800-232-6535 *FINANCING AVAILABLE

Revolution 52 Alum Flat 48' Wide Spread Air (Model Code: HAR5212WSA)

Length / Width: 48 feet x 102 inches

Suspension Type: Wide spread air

Frame Rating: 80,000 lbs distributed - 52,000 lbs concentrated in 4 feet- GAWR and tire ratings determine legal payloads

Flooring: **GROOVES IN FLOOR** -- Knurled extruded 3-1/8 aluminum - StirLITE Friction Stir Welded Floor with 2 wood nailer strips; Heavy wall extrusions in single coil area; Heavy wall extrusion at rear

Side Rails: Exclusive **Revolutionary RASR Rail Technology** -- one piece routed aluminum designed for strength and impact

Stationary Chain Cargo Tie Downs: 15 pair - recessed in siderails

Stake Pockets: Routed Aluminum on 24 inch centers (2 load securement openings in between stake pockets)

Rubrail: Integrated with side rail

Main Beams: Extruded aluminum - 8.25 inch flange

Kingpin: 30 inches

Loaded Fifth Wheel Height: 49 inches

Landing Gear: Jost AX100G19 **ALUMILIGHT Aluminum Landing Gear** with forward & rear bracing

Bulkheads: None standard

Number of Axles: 2

Axle Spindle: Tapered

Brakes: Spring brakes, auto slacks, Aluminum air tank

Air Line Filters: (2) Meritor In-line type installed

ABS: Meritor Wabco iABS 4S/2M - no cable or tool

Axle Spread: 122 inches - set at rear

Hub and Drums: 10-hole hub-piloted with outboard cast drums - STANDARD

Wheel Ends: Grease in hubs - *** 5-year wheel end warranty ***

Wheels: 22.5 x 8.25 aluminum High Polish wheels with 4 Spacers

Tires: 295/75R 22.5 14PR OEM standard tires

Tire Inflation System: None standard

Suspension Detail: Hendrickson AANT23K Intraax air ride

Auto Glad Hand Dump : Installed

Electric Dump Valve: Wired to 7-way auxiliary socket to dump rear axle

Air Lift: None standard

Front Corners: Tapered

Electrical System: LED: 5 Lights/Side; Rear with 3 4-inch Round Lights/Side, 3 Round Lights Center Cluster

Other Electrical Specifications: 4 way socket on rear with one hot/one ground pin for wide load and strobe light connections

Paint: Black urethane on steel parts with Revolution decals - STANDARD

Conspicuity Tape: Per NHTSA specs - installed in recess on rubrails

Bumper: Bolt-On; Meets underride requirements

Mudflaps: 2 sets OEM standard; Spring loaded brackets behind front axle

Spare Tire Carrier: None standard

Winch Track: Dual full-length integrated aluminum -- double L design

Sliding Winches: 16 total all located on Driver Side

27 foot Winch Straps: None standard

30 foot Winch Straps: None standard

Sliding J-Hook for Ring vs. Flat Hook on 4" Strap: None standard

Dock Bumpers: 1 pair rubber on rear

Hubodometer: None standard

Registration Holder: Install registration holder - OEM standard

Tool Box: 2 CAM LOCK aluminum double door boxes - 24 inches x 24 inches x 60 inches - installed one ea. side

VIN Plate: Bilingual US/Canadian VIN plate

Unit Numbers & Decals: Not installed

DISCLAIMER

Specifications are believed to be correct, but may contain errors and/or omissions. Photographs are the representative of the subject equipment but may not be identical.

Equipment availability, prices and specifications are subject to change without notice.

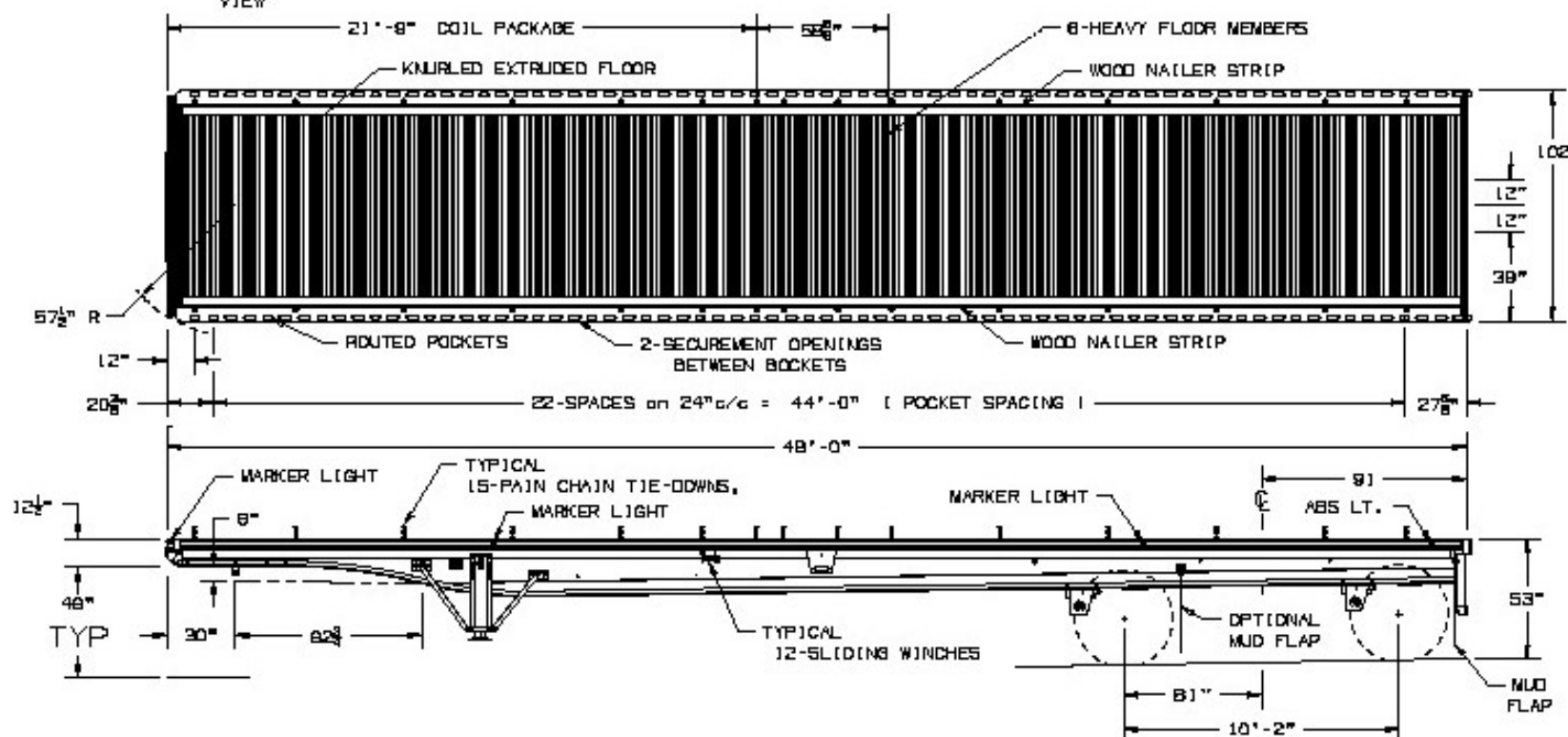
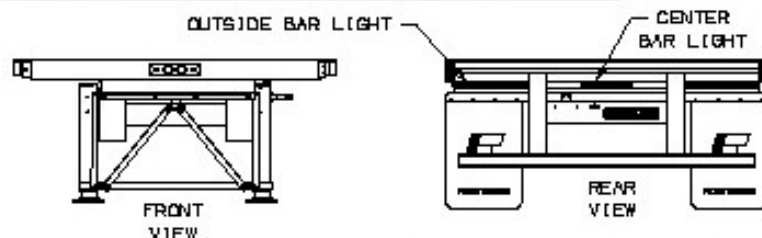
THIS DOCUMENT REMAINS PROPERTY OF FONTAINE TRAILER COMPANY. ITS CONTENTS ARE CONFIDENTIAL AND PROPRIETARY. DO NOT REPRODUCE, USE OR DISCLOSE ANY INFORMATION WITHOUT WRITTEN CONSENT FROM FONTAINE TRAILER COMPANY.

NOTE:

FRAME RATINGS DENOTE WHAT THE TRAILER FRAME IS CAPABLE OF SUPPORTING. THE SUSPENSION/TIRES MAY NOT BE CAPABLE OF SUPPORTING THESE LOADS WHEN CONCENTRATED OVER THE SUSPENSION AREA. REFER TO THE TRAILER GVWR AND GAWR.

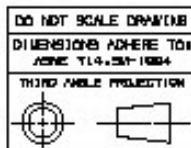
FRAME RATINGS

DISTRIBUTED	80,000
48"	52,000



KING PIN HEIGHT RANGE

47"
48"
48" (TYPICAL)
50"



TOLERANCES UNLESS OTHERWISE SPECIFIED

FRACTIONS: ± 1/16

DECIMALS: ± .005

HOLES: ± .005

ANGLES: ± 2"

UNITS OF DIMENSION ARE: INCHES

DRAWN BY: _____ DATE: _____

CHECKED BY: _____ DATE: _____

APPROVED BY: _____ DATE: _____

FONTAINE TRAILER CO.
HALEYVILLE, AL

TITLE: HAR5212WSA

PRINTED OR COPIED DOCUMENT IS UNCONTROLLED DOCUMENT UNLESS STAMPED ORIGINAL

SIZE: A SCALE: 1:1 SHEET: 1 OF 1

DRAWING NUMBER: 18732-SALES REV. C