

# HALE TRAILER BRAKE & WHEEL



A030042  
TEMP VIN: S028944

## SALES | RENTALS | PARTS | SERVICE

Allentown, PA:	800-383-8894	Little Rock, AR:	833-424-8944
Baltimore, MD:	888-601-7500	Portland, ME:	800-325-4253
Concord, NC:	800-438-2250	Raleigh, NC:	833-418-9777
Delmar, DE:	866-486-1400	Scranton, PA:	800-569-1400
Des Moines, IA:	888-673-5011	Springfield, MA:	800-854-5306
Elkton, MD:	800-544-7127	Voorhees, NJ:	866-315-0235
Jacksonville, FL:	800-828-3055	Walpole, MA:	800-854-5310

haletrailer.com | @haletrailer



**800-232-6535** \*FINANCING AVAILABLE

### Revolution 52 Alum Flat 48' Wide Spread Air (Model Code: HAR5212WSA)

**Length / Width:** 48 feet x 102 inches

**Suspension Type:** Wide spread air

**Frame Rating:** 80,000 lbs distributed - 52,000 lbs concentrated in 4 feet- GAWR and tire ratings determine legal payloads

**Flooring:** NEW for 2026 Year Model - FLAT TOP-NO GROOVES (\*Doesn't Accept Floor Securement Devices) -- Knurled extruded 3-1/8 aluminum - StirLITE Friction Stir Welded Floor; 2 wood nailer strips; Heavy wall extrusions in single coil area and one at rear

**Side Rails:** Exclusive Revolutionary RASR Rail Technology -- one piece routed aluminum designed for strength and impact

**Stationary Chain Cargo Tie Downs:** 15 pair - recessed in siderails

**Stake Pockets:** Routed Aluminum on 24 inch centers (2 load securement openings in between stake pockets)

**Rubrail:** Integrated with side rail

**Main Beams:** Extruded aluminum - 8.25 inch flange

**Kingpin:** 30 inches

**Loaded Fifth Wheel Height:** 49 inches

**Landing Gear:** Jost AX100G19 ALUMILIGHT Aluminum Landing Gear with forward & rear bracing

**Bulkheads:** Bolt-on aluminum bulkhead - 12 inch turnback - 48 inches high (No front pockets)

**Number of Axles:** 2

**Axle Spindle:** Tapered

**Brakes:** Spring brakes, auto slacks, Aluminum air tank

**Air Line Filters:** (2) Meritor In-line type installed

**ABS:** Meritor Wabco iABS 4S/2M - no cable or tool

**Axle Spread:** 122 inches - set at rear

**Hub and Drums:** 10-hole hub-piloted with outboard cast drums - STANDARD

**Wheel Ends:** Grease in hubs - \*\*\* 5-year wheel end warranty \*\*\*

**Wheels:** 22.5 x 8.25 aluminum High Polish wheels with 4 Spacers

**Tires:** 295/75R 22.5 14PR OEM standard tires

**Tire Inflation System:** None standard

**Suspension Detail:** Hendrickson AANT23K Intraax air ride

**Auto Glad Hand Dump :** Installed

**Electric Dump Valve:** Wired to 7-way auxiliary socket to dump rear axle

**Air Lift:** (1) UBL installed on front axle wired to front 7-way auxiliary socket; Includes suspension change to AANL23K for additional tire ground clearance; \*NOTE: Axle to be lifted only when trailer is unloaded

**Front Corners:** Tapered

**Electrical System:** LED: 5 Lights/Side; Rear with 3 4-inch Round Lights/Side, 3 Round Lights Center Cluster

**Other Electrical Specifications:** 4 way socket on rear with one hot/one ground pin for wide load and strobe light connections

**Paint:** Black urethane on steel parts with Revolution decals - STANDARD

**Conspicuity Tape:** Per NHTSA specs - installed in recess on rubrails

**Bumper:** Bolt-On; Meets override requirements

**Mudflaps:** 2 sets OEM standard; Spring loaded brackets behind front axle

**Spare Tire Carrier:** None standard

**Winch Track:** Dual full-length integrated aluminum -- double L design

**Sliding Winches:** 12 standard; 6 each side; sliding rope hook/ winch strap hook retainers - STANDARD

**27 foot Winch Straps:** None standard

**30 foot Winch Straps:** None standard

**Sliding J-Hook for Ring vs. Flat Hook on 4" Strap:** None standard

**Dock Bumpers:** 1 pair rubber on rear

**Hubodometer:** None standard

**Registration Holder:** Install registration holder - OEM standard

**Tool Box:** 1 aluminum double door box - 24 inches x 24 inches x 60 inches - installed Road Side between spread axles

**VIN Plate:** Bilingual US/Canadian VIN plate

#### DISCLAIMER

Specifications are believed to be correct, but may contain errors and/or omissions. Photographs are the representative of the subject equipment but may not be identical. Equipment availability, prices and specifications are subject to change without notice.

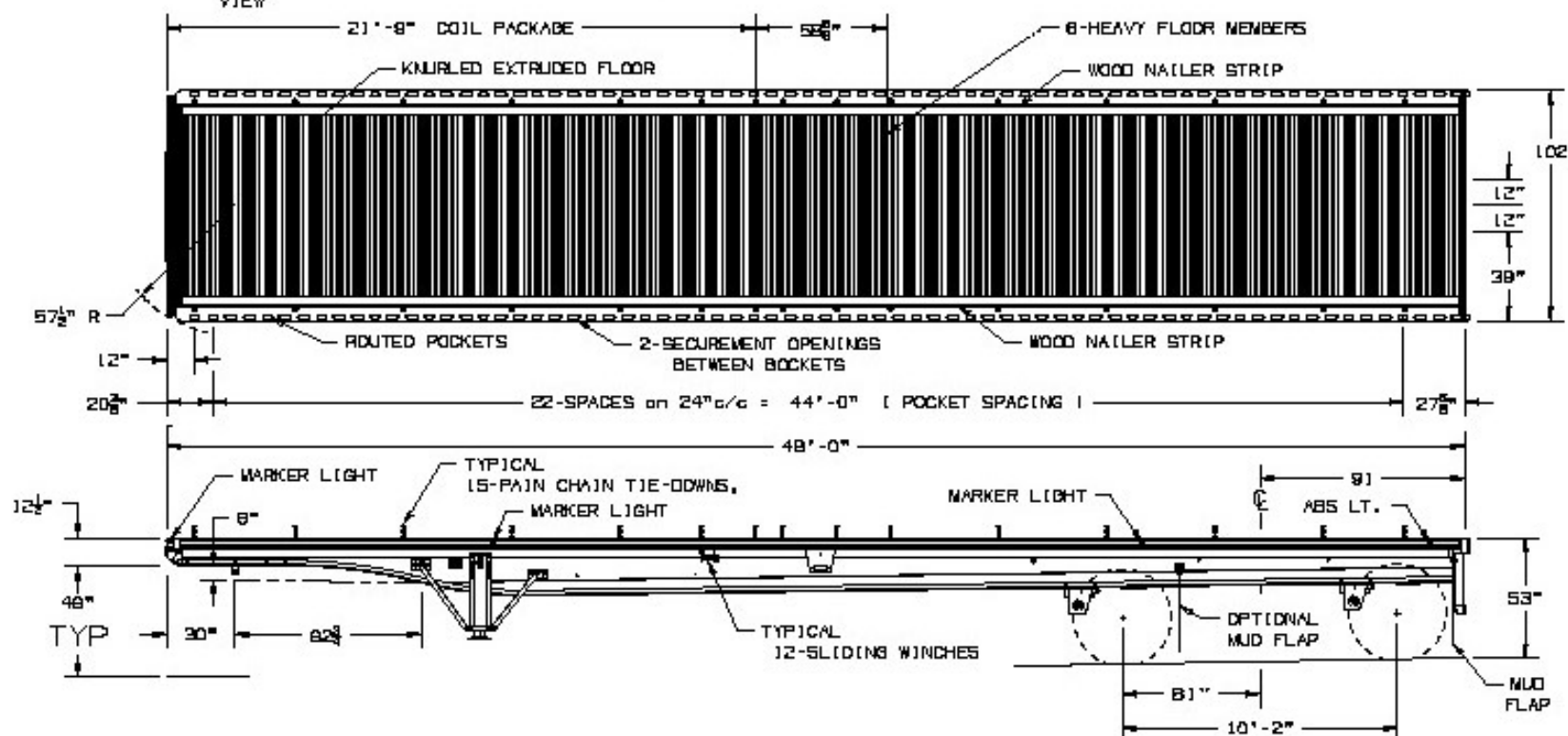
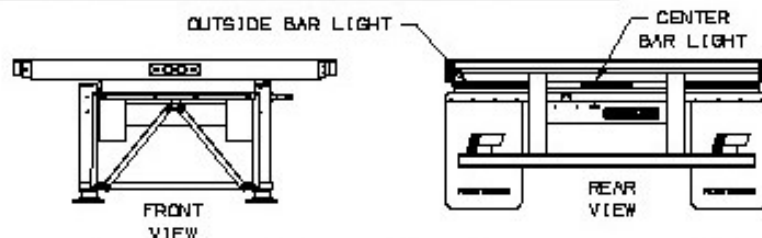
THIS DOCUMENT REMAINS PROPERTY OF FONTAINE TRAILER COMPANY. ITS CONTENTS ARE CONFIDENTIAL AND PROPRIETARY. DO NOT REPRODUCE, USE OR DISCLOSE ANY INFORMATION WITHOUT WRITTEN CONSENT FROM FONTAINE TRAILER COMPANY.

# NOTE:

FRAME RATINGS DENOTE WHAT THE TRAILER FRAME IS CAPABLE OF SUPPORTING. THE SUSPENSION/TIRES MAY NOT BE CAPABLE OF SUPPORTING THESE LOADS WHEN CONCENTRATED OVER THE SUSPENSION AREA. REFER TO THE TRAILER GVWR AND GAWR.

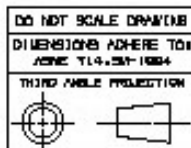
## FRAME RATINGS

DISTRIBUTED	80,000
48"	52,000



## KING PIN HEIGHT RANGE

47"  
48"  
48" (TYPICAL)  
50"



TOLERANCES UNLESS OTHERWISE SPECIFIED

FRACTIONS: ± 1/16

DECIMALS: ± .005

HOLES: ± .005

ANGLES: ± 2"

UNITS OF DIMENSION ARE: INCHES

DRAWN BY: \_\_\_\_\_ DATE: \_\_\_\_\_

CHECKED BY: \_\_\_\_\_ DATE: \_\_\_\_\_

APPROVED BY: \_\_\_\_\_ DATE: \_\_\_\_\_

**FONTAINE TRAILER CO.**  
HALEYVILLE, AL

TITLE: HAR5212WSA

PRINTED OR COPIED DOCUMENT IS UNCONTROLLED DOCUMENT UNLESS STAMPED ORIGINAL

SIZE: A SCALE: 1:1 SHEET: 1 OF 1

DRAWING NUMBER: 18732-SALES REV. C