

HALE

TRAILER

BRAKE & WHEEL



A033690
VIN: 76288

SALES | RENTALS | PARTS | SERVICE

Allentown, PA:	800-383-8894	Little Rock, AR:	833-424-8944
Baltimore, MD:	888-601-7500	Portland, ME:	800-325-4253
Concord, NC:	800-438-2250	Raleigh, NC:	833-418-9777
Delmar, DE:	866-486-1400	Scranton, PA:	800-569-1400
Des Moines, IA:	888-673-5011	Springfield, MA:	800-854-5306
Elkton, MD:	800-544-7127	Voorhees, NJ:	866-315-0235
Jacksonville, FL:	800-828-3055	Walpole, MA:	800-854-5310

haletrailer.com | @haletrailer



800-232-6535 *FINANCING AVAILABLE

Velocity 48' Spring Slider (Model: HAVSF12SST)

Quantity:

1

Length / Width: 48 feet x 102 inches

Suspension Type: Sliding spring tandem; This Trailer Design Does NOT Meet Proposed GHG2 Compliance Requirements

Frame Rating: 80,000 lbs distributed - GAWR and tire ratings determine legal payloads

Flooring: 1 1/8 inch wood

Crossmembers: 12 inch centers - 4 inch jr. I-steel

Side Rails: 6 inch structural channel @ 6.5 lbs/ft

Stake Pockets: 3/16 inch steel on 24 inch centers

Pipe Spools: Double between stake pockets

Rubrail: 3/8 inch x 2 1/2 inch steel

Main Beams: 130K load bearing flanges

Kingpin: 30 inches

Loaded Fifth Wheel Height: 49 inches

Landing Gear: OEM Standard with Forward & Rear Bracing

Knee Braces: Fabricated on approx. 60 inch C/C

Bulkheads:None standard

Bulkhead Pockets: 4 - F-5 DOT-type steel

Number of Axles: 2

Axle Spindle:Tapered

Brakes: Spring brakes, auto slacks

Air Line Filters:(2) Meritor In-line type installed

ABS: 4S/2M - no cable or tool

Axle Spread: 49 inches

Hub and Drums: 10-hole hub-piloted with outboard cast drums

Wheel Ends: Oil in hubs

Wheels:22.5 x 8.25 steel disc wheels - pre-painted white - STANDARD

Tires:295/75R 22.5 14PR OEM standard tires- STANDARD

Tire Inflation System:None standard

Suspension Detail: OEM Standard 3-leaf spring slider - 60 inches adjustable

Front Corners: Tapered

Electrical System:LED: 3 lights/side, 2 lights/side on rear- STANDARD

Paint:Black urethane with Velocity decals - STANDARD

Conspicuity Tape: Per NHTSA specs - installed on rubrails

Bumper: Weld-on type - meets underride requirements

Mudflaps:1 set OEM standard behind rear axle

Spare Tire Carrier:None standard

Winch Track: Steel on road side

Sliding Winches:12 standard

27 foot Winch Straps:None standard

30 foot Winch Straps:None standard

Dock Bumpers: 1 pair rubber on rear

Hubodometer:None standard

Registration Holder:Install registration holder - OEM standard

Tool Box:None standard

VIN Plate: Bilingual US/Canadian VIN plate

Please Note: Price includes commodity surcharges

Unit Numbers & Decals:Not installed

DISCLAIMER

Specifications are believed to be correct, but may contain errors and/or omissions. Photographs are the representative of the subject equipment but may not be identical. Equipment availability, prices and specifications are subject to change without notice.

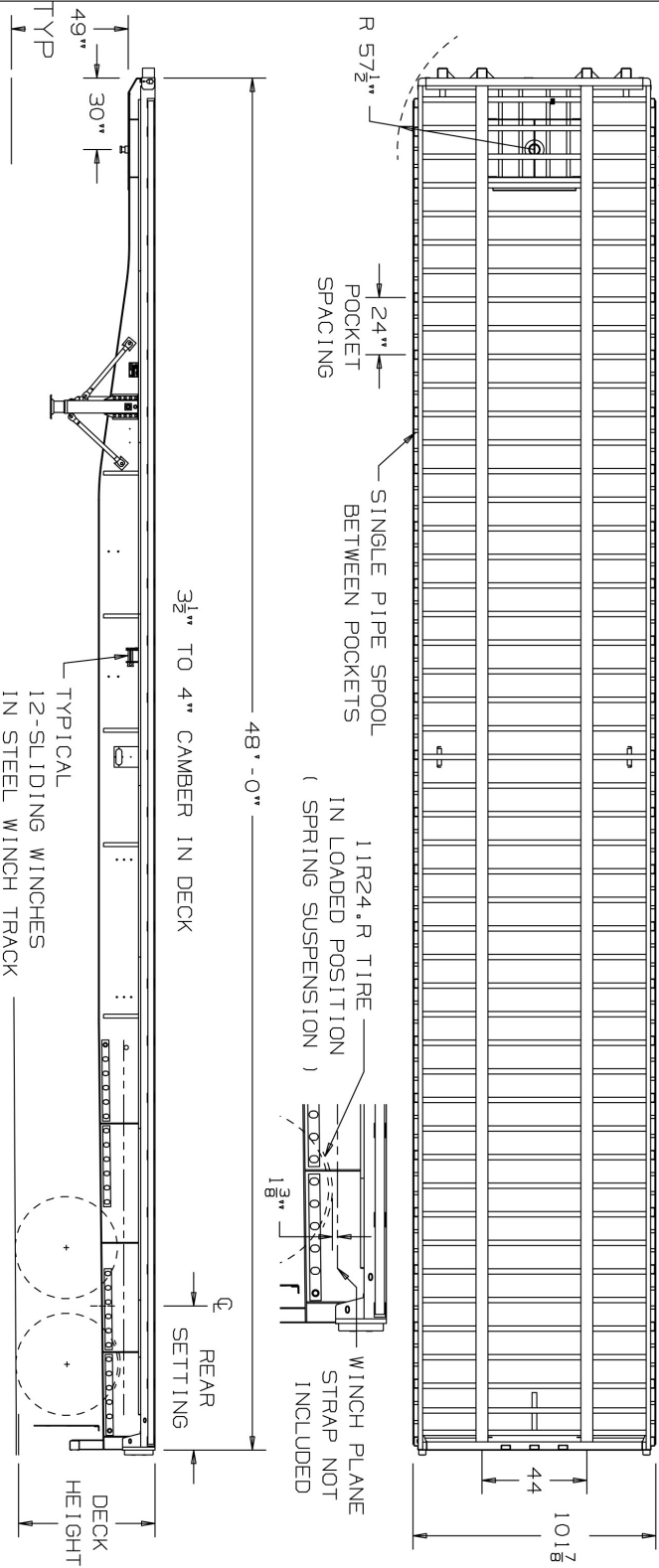
THIS DOCUMENT REMAINS PROPERTY OF FONTAINE TRAILER COMPANY. ITS CONTENTS ARE CONFIDENTIAL AND PROPRIETARY. DO NOT REPRODUCE, USE OR DISCLOSE ANY INFORMATION WITHOUT WRITTEN CONSENT FROM FONTAINE TRAILER COMPANY.

SUSPENSION TABLE					
SUSPENSION	TIRE SIZE	REAR DECK HT. LIGHT LOADED		SUSP. REAR SETTING	KING PIN TO REAR AXLE
		57"	55½"		
HUTCH, H9700 on H-900-38 SLIDE BOX, 3-LEAF SPRINGS H356-00, DWG# 03706072	295/75R 22.5, 14-PLY	57"	55½"	60½"	37'-6" FRONT SETTING
	11R 24.5 14-PLY	58½"	56½"		42'-6" REAR SETTING

FRAME RATINGS	
DISTRIBUTED	80,000
COIL	46,400
60"	49,405
120"	52,885
180"	56,900

12" TYP. FLOOR SILL SPACING

NOTE:
FRAME RATINGS DENOTE WHAT THE TRAILER FRAME IS CAPABLE OF SUPPORTING. THE SUSPENSION/TIRES MAY NOT BE CAPABLE OF SUPPORTING THESE LOADS WHEN CONCENTRATED OVER THE SUSPENSION AREA. REFER TO THE TRAILER GVMR AND GAWR.



KING PIN HEIGHT RANGE	
47"	
48"	
49" (TYPICAL)	
50"	

DO NOT SCALE DRAWING	TOLERANCES UNLESS OTHERWISE SPECIFIED	DRAWN BY *	DATE *
DIMENSIONS ADHERE TO: ASME Y14.5M-1994	FRACTIONS: ± 1/16	CHECKED BY	DATE
THIRD ANGLE PROJECTION	DECIMALS: ± .005	APPROVED BY	DATE
	HOLES: ± .005		
	ANGLES: ± 2°		
	UNITS OF DIMENSION ARE: INCHES		

TITLE: FONTAINE TRAILER CO. HALEYVILLE, AL	
HAVSF125ST	

PRINTED OR COPIED DOCUMENT IS UNCONTROLLED DOCUMENT UNLESS STAMPED ORIGINAL	DRAWING NUMBER 19233-SALES	REV. 0
SIZE: A	SCALE: **	SHEET: 1 OF 1